

MICHIGAN **Winter** Operations Conference 

Attend the largest snow fighters' conference in Michigan!

October 28-29, 2014
Treetops Resort - Gaylord, MI



Network for Success

It won't be long before the snow starts to fly. Preparing for a successful season of winter maintenance is essential to local agencies. Changes in operational practices, routine maintenance and new technology can help your agency save money as you gear up for the winter season. Plan to attend the Michigan Winter Operations Conference where you can meet with your peers from state, county and municipal agencies to share and learn new ideas.



Build Your Program

Registered attendees will have full access to a variety of technical presentations, including presentations for operators and mechanics, managers and supervisors, and exhibitors.

Meet Industry Experts

The conference will also bring in suppliers of winter maintenance equipment, materials and services from across the country. Learn more about the latest technologies and techniques for managing ice and snow. The showcase will be open starting at noon on the first day of the conference.

The 2013 Winter Operations Conference attracted over 200 operators, superintendents, managers, and directors from state, county, and municipal agencies.

Date and Location

October 28-29, 2014
 Treetops Resort
 3962 Wilkinson Rd
 Gaylord, MI 49735



Treetops Resort & Conference Center is located just outside beautiful downtown Gaylord, MI and is within convenient driving distance for all road agencies in both Upper and Lower Peninsula Michigan. Surrounded by rolling hills and towering trees, and near dozens of lakes, rivers, and trails, the Gaylord area is a great place for outdoor enthusiasts.

Hotel Accommodations

Overnight rooms at reduced rates are available in The Lodge (\$99/night) or The Inn (\$89/night); both are within walking distance to the Conference Center (see photo to the right). Please call (855) 261-8764 for reservations. Be sure to mention "Winter Operations" to get the reduced rate.

Deadline for reserving a room is September 27. Reservations made after the deadline may be subject to official resort rates.

Check In Time

5:00 pm

Check Out Time

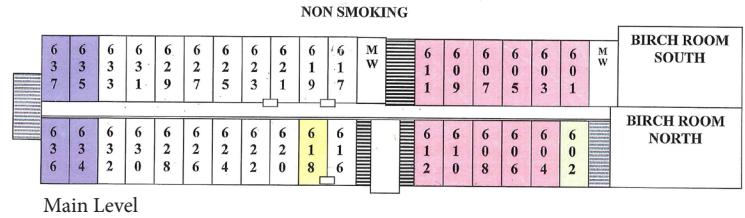
12:00 noon

Transportation

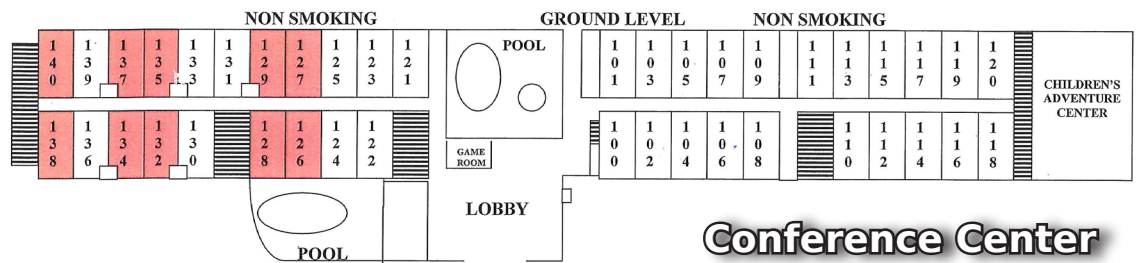
Parking is limited outside of the conference center due to outdoor exhibit area. There will be bus transportation available for travel between the Conference Center and the Lodge and the Inn.



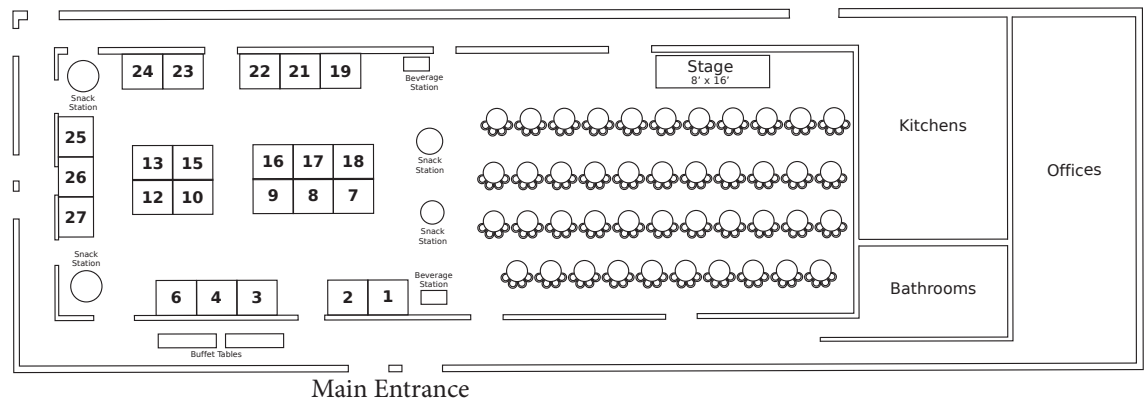
The Lodge



The Inn



Conference Center



Cost & Registration

Cost is \$150.00 per attendee. The registration fee includes:

- Conference handouts and other materials
- Food and refreshments for all meals and breaks listed on the agenda
- Full access to all technical sessions, exhibit space, and outdoor equipment area
- After-dinner comedy show on October 28

To register for the conference, please contact the Center for Technology & Training office at (906) 487-2102 or register [online](#).

No-shows or cancellations within three business days of the conference will be charged the full registration fee. Substitutions will be accepted.

Door Prize Raffle

Prizes Include:

- Cabela's & Walmart Gift Cards
- Boss Winter Jacket
- Trail Camera
- Binoculars
- and More!

Prizes will be drawn throughout the vendor presentations after lunch on Oct. 28th. Must be present to win.

Enter before 1:00 pm on Oct 28th

Keynote Speaker

Diana Clonch

Public Works Consulting Specialist

Diana Clonch has been presenting on winter maintenance training since 2004. Some conferences that she has presented at include the American Association of State Highway Transportation Officials, the Butler County Engineers Snow Conferences, and the APWA North American Snow Conference. Diana's presentation topics center around winter maintenance training, snow and ice control, conflict resolution, salt supplies and operations, operations management and innovative technology.



Session Topics Will Include:

- Legal: Law Enforcement, Weigh Master, CDL, Overloading Trucks
- Plowing Wider with the Tow Plow and Dual Wing
- Innovations in Equipment
- RWIS and ESS
- Making Brine Simple
- Salt Distribution Systems
- Sand-Salt Mixes
- Policies: "Tell your story, how does your policy work?"
- Contracting of Services
- AVL/MDSS Implementation
- Equipment Checklist: Preparing Equipment for Winter
- Snow Plow Safety
- Snow Removal in Parks and Recreation Areas
- Liquid Controller Calibration Demonstration

Discussion Topics



Training strategies and best practices; innovations from in the trenches; training program for plow drivers; transitioning from shop floor to fleet manager.

Materials

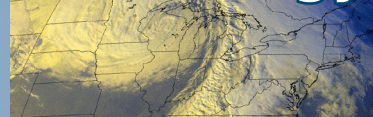


Agricultural bi-products for snow and ice control; minimizing salt bounce and scatter; controlling ice without chlorides; direct liquid application; high-performance salt pre-wetting agents.



Results of tow plow test; designing infrastructure for winter maintenance; refurbishing trucks; calibrating equipment; choosing the right cutting edge; snowplowable LED lane markers.

Technology



Weather forecasting; road weather information systems; environmental sensing station; maintenance decision support systems.

Planning Committee

Tom Bruff

Manager, SEMCOG Transportation Planning and Policy Development

Tim Croze

Region Maintenance Support Engineer, MDOT Maintenance Field Services Section

John Gorney

Operations and Utilities Manager, City of Kentwood

Brian Gutowski

Engineer-Manager, Emmett County Road Commission

John Kiefer

Training Coordinator, Center for Technology & Training

Bryan Pickworth

Road Maintenance Supervisor, City of Farmington Hills

Matt Wiktorowski

Field Operations Senior Manager, City of Novi

