

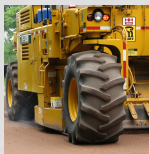
Transportation Asset Management for Local Officials

Everything you need to know about managing local roads

Each of us applies the basic principles of asset management every day to manage decisions relating to our businesses, homes, automobiles, and personal possessions. In the Introduction to Transportation Asset Management workshop, we will address asset management issues faced specifically by elected official, who make decisions about roads for cities, townships, and counties. No engineering background is necessary.

This workshop will provide an introduction to several core components:

- The importance of asset management—roads included
- Overview of transportation asset management principles
- Pavement deterioration basics—stay ahead of the curve
- Preventive maintenance for asphalt roads—a mix of fixes
- Selecting projects to maximize return on investment—the right treatment
- Lowering costs by using an asset management plan



Crush and Shape



Ultrathin Overlay



Crack Seal



Mill and Overlay



Durapatch



Chip Seal

January 23, 2019

Road Commission of Kalamazoo County

3801 East Kilgore Road

Kalamazoo, Michigan 49001

8:00 – 11:00 a.m. ET

► 7:45 a.m. sign-in

Special guest State Transportation Commissioner
George K. Heartwell will provide
a local perspective on his
experiences with asset
management

Registration*

No fee to attend. The Michigan Transportation Asset Management Council (TAMC) covers the training session registration costs.

Register at: <http://ctt.nonprofitsoapbox.com/2019tamlo-kalamazoo>

Questions? E-mail ctt@mtu.edu

* Required for fulfillment of continuing education. The Center for Technology & Training's (CTT) continuing education policy is available at ctt.mtu.edu/ContinuingEducation.

No-shows or cancellations within three business days of the session will be charged the full registration fee. Substitutions will be accepted.



Michigan
Transportation Asset
Management Council



Center for
Technology & Training