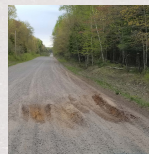


The Science behind Seasonal Weight Restrictions

Everything you need to know about seasonal weight restrictions

Each spring, seasonal weight restrictions limit the size and type of loads that can be transported on many Michigan roads. These restrictions can surprise and frustrate transportation providers who many not be familiar with them or their purpose. The public and political pressure that road-owning decision makers face to delay the onset of restrictions or lift them early can be intense, especially when weather patterns necessitate a change from a “normal” year.

This webinar explains what occurs in a pavement when it freezes and thaws in non-technical terms. It also explains why seasonal weight restrictions are so critical for protecting the billions of dollars invested in Michigan’s public road system. This webinar is ideal for non-technical elected and appointed officials who need to explain seasonal weight restrictions to the public as well as those in transportation who must work with seasonal weight restrictions.



VIRTUAL EVENT:

Thursday, April 29, 2021

1:00 – 2:30 p.m. ET

Registration*

No fee to attend

Register at: <http://ctt.nonprofitsoapbox.com/2021swrlo-0429>

Virtual event held in Zoom; more detail provided after registration.

Questions? E-mail ctt@mtu.edu

* Required for fulfillment of continuing education (Center for Technology & Training policy: ctt.mtu.edu/ContinuingEducation). No-shows/cancellations within three business days of the event are charged the full registration fee; substitutions accepted. Accommodation requests related to a disability should be made by ten business days prior to the event to ctt@mtu.edu. Michigan Technological University is an Equal Opportunity Educational Institution/Equal Opportunity Employer that provides equal opportunity for all, including protected veterans and individuals with disabilities.

Instructors (CTT Staff)

Tim Colling, PhD, PE, Director of the CTT



Michigan's
Local Technical
Assistance Program



Center for
Technology & Training