

**2012 Michigan Bridge Conference
Bridge Inspection Workshop**

**Michigan
Bridge Inspection Manual**

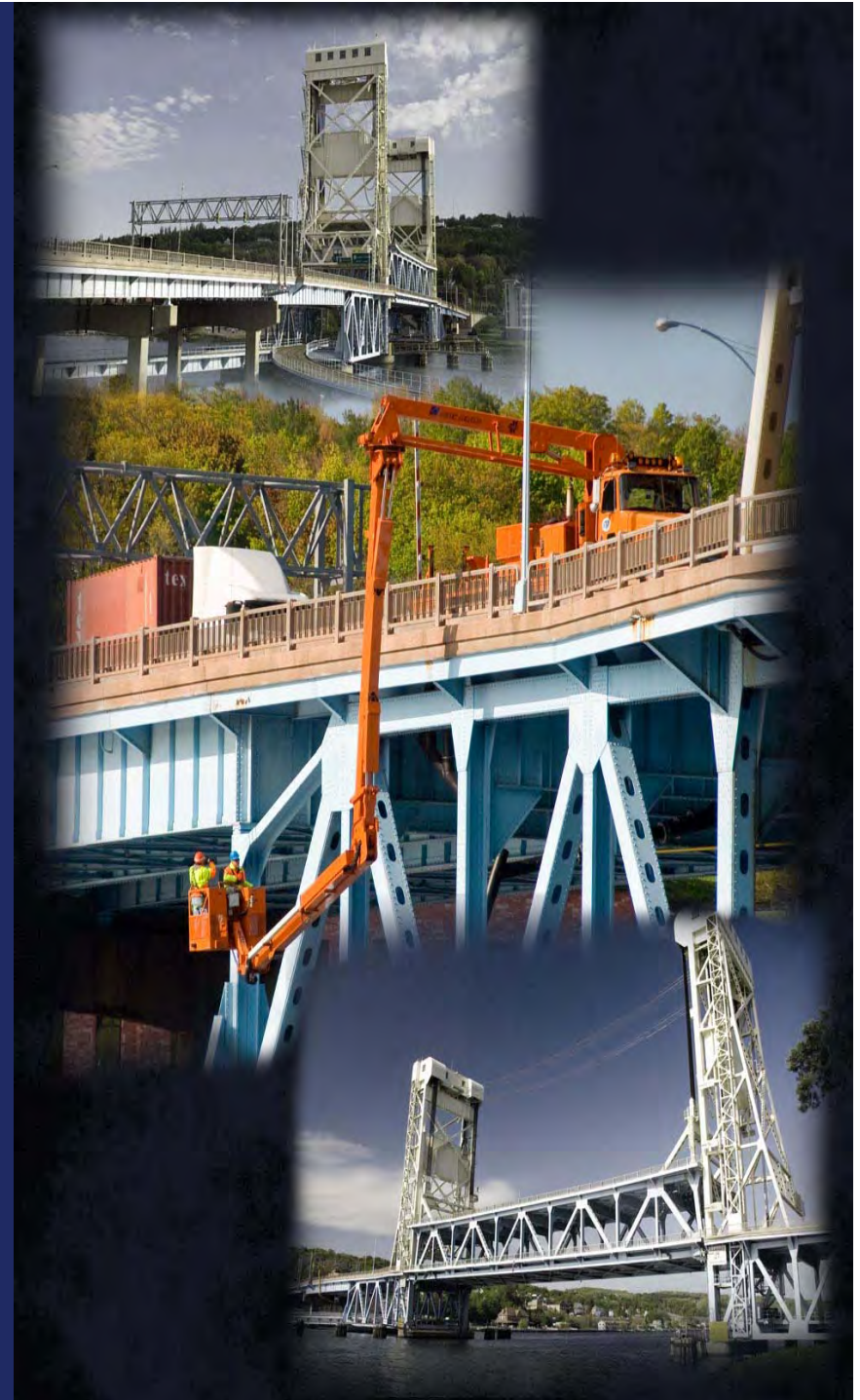
NHI Training Update

Rich Kathrens

MDOT Bridge Safety Inspection Engineer

kathrens@michigan.gov

March 20, 2012





2012 Bridge Inspection Workshop



Result of 2011 FHWA NBIP Metric Review

MDOT Committed to Developing a Bridge Inspection Manual

Metrics 15 Bridge Files, M16 Fracture Critical Members, M20 QA/QC, M21 Critical Findings

Date to Complete Manual	March 2014
Date for completion of Critical Findings Section	August 2012
Date for completing of Bridge Files Section	September 2012





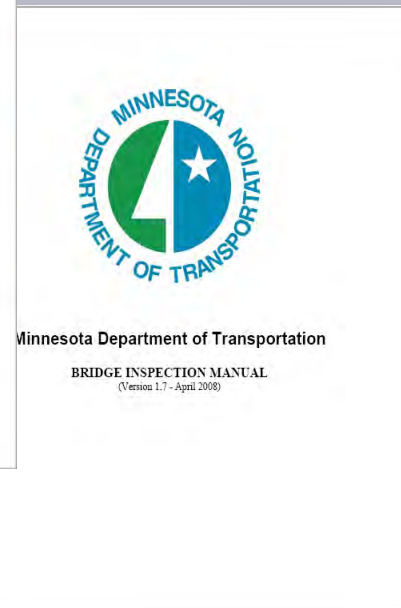
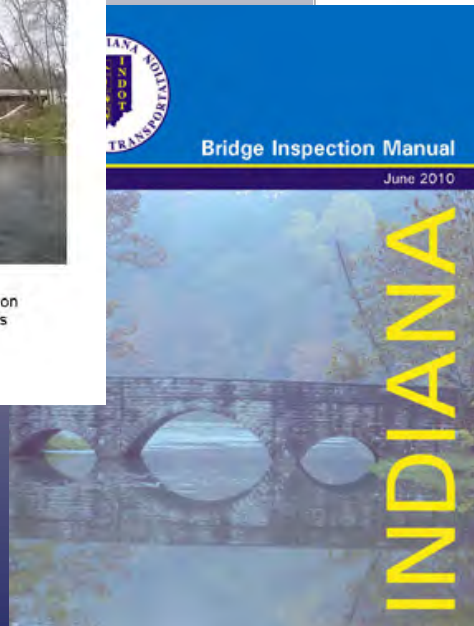
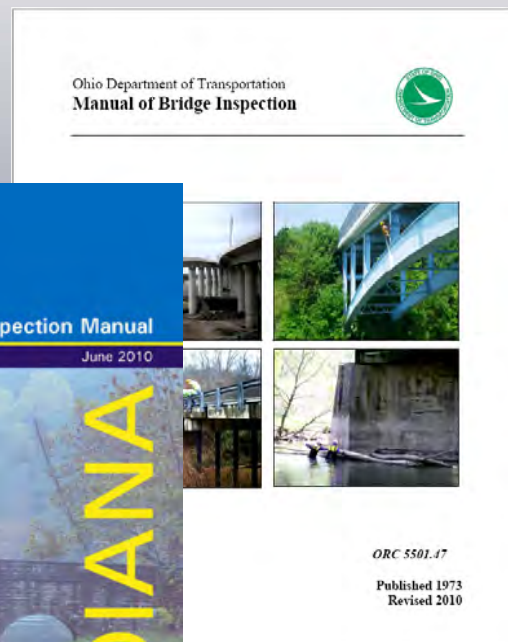
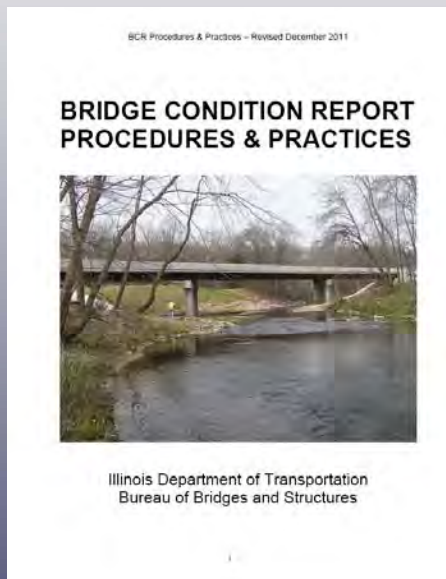
2012 Bridge Inspection Workshop



Other states have Bridge Inspection Manuals

Vary in Content

Include SIA Coding Guide, Load Rating, Material from AASHTO and BIRM in one Manual.





2012 Bridge Inspection Workshop



MDOT's Bridge Inspection Manual

Intent of the Guide:

- Clear up “Grey” areas in the NBIS Rules, AASHTO Manual, and BIRM. (Supplement and Reference).
- Document policies and procedures that MICHIGAN is following in regards to bridge inspection. (i.e Recurrent Training, QA/QC, Critical Findings, etc.)
- Provide a resource for new and existing bridge owners and inspectors to help obtain consistency statewide. (Both MDOT and Local Agency)
- Goal is establish a “live” document that will benefit all that are involved with Bridge Safety Inspections and the Bridge Managements



Format:

**3-Ring Bound w/ Specific Appendices
Available Online (Similar to Design Manual)**

Sample Table of Content:

**Qualifications
Inspection Frequency
Inspection Procedures
Bridge Files
Critical Findings
Damage Inspections
Scoping (Detailed Inspections)
Stream Bed X-Sections
QA/QC Procedures
Bridge Inspection Rating Guides**



Department of Transportation
Michigan.gov Home | MDOT Home | MDOT Sitemap | Contact MDOT | MDOT FAQs | Search

Bridge Design Manual

Get Acrobat Reader This manual requires the Adobe Acrobat Reader Plugin. You can get it free from Adobe!

For information regarding the technical content of the Bridge Design Manual contact:

Vladimir Zokvic, Bridge Standards Specialist
Phone: 517-373-0740
E-mail: zokvicv@michigan.gov

Road and Bridge Design Publications - Monthly Update

Michigan.gov Home | State Web Sites
[Privacy Policy](#) | [Link Policy](#) | [Accessibility Policy](#) | [Security Policy](#)
Copyright © 2001-2012 State of Michigan



How will the manual be created

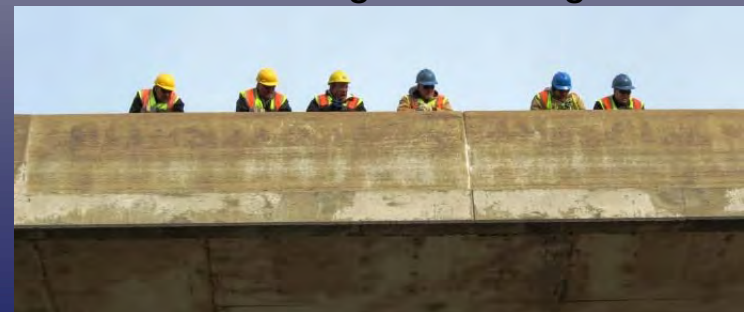
Team – MDOT's Structures Management section, Region Bridge Engineers, Local Agency Representatives, and Consultants

Bridge Program Manager will take lead on research and preparing an outline for each section of the Manual, and send out to the Team to review.

- » Once Outline is approved, Remaining portion of section will be created and reviewed by team.
- » During the review process Region Bridge Engineers will work w/ the inspectors to have a chance to review.
- » As Sections of the manual are completed they will be published and posted to the web for use.



The general table of content and sections for Critical Findings and Bridge Files and will be completed first.





2012 Bridge Inspection Workshop



*Improving the
Performance of
the Transportation
Industry Through
Training*

NHI Announces a newly updated course

130055 Safety Inspection of In-Service Bridges
Updated course starts March 5, 2012

130055 Safety Inspection of In-Service Bridges

- Course Based on 2012 BIRM
- (2) Half day Field Trips
- Instruction on Critical Findings
- New AASHTO Element Level Rating





2012 Bridge Inspection Workshop



New Prerequisite Requirements (NHI 130055)

All participants must successfully complete one of the following courses:

[130054-Engineering Concepts for Bridge Inspectors](#)

5-day Instructor-led Course intended for:

- Those with limited experience with the inspection of in-service highway bridges
- Engineers without bridge experience
- Those who need a refresher in basic bridge design concepts

[130101-Introduction to Safety Inspection of In-Service Bridges](#)

14-hour, Web-based Training and assessment intended for:

- Those involved in inspecting bridges or in charge of a bridge inspection unit
- A background in bridge engineering is strongly recommended

[130101A-Prerequisite Assessment for Safety Inspection of In-Service Bridges](#)

Web-based Assessment intended for:

- Those involved in inspecting bridges or in charge of a bridge inspection unit
- Those with significant experience and/or a comprehensive background in bridge inspection or engineering



2012 Bridge Inspection Workshop



Thank You

