

STRUCTURES MANAGEMENT SECTION

Eric Burns, P.E.

Structures Management Section
Engineer

517-322-3326 burnse@michigan.gov



Michigan Department of Transportation

STRUCTURES MANAGEMENT SECTION

- Bridge Safety Inspection
- Movable And Fracture Critical Inspection
- Big Bridge Inspection
- Bridge Repair Crew
- Emergency Coordination
- Region Structure Support
 - Statewide Sign Crew
 - Reach All Crew

REORGANIZATION

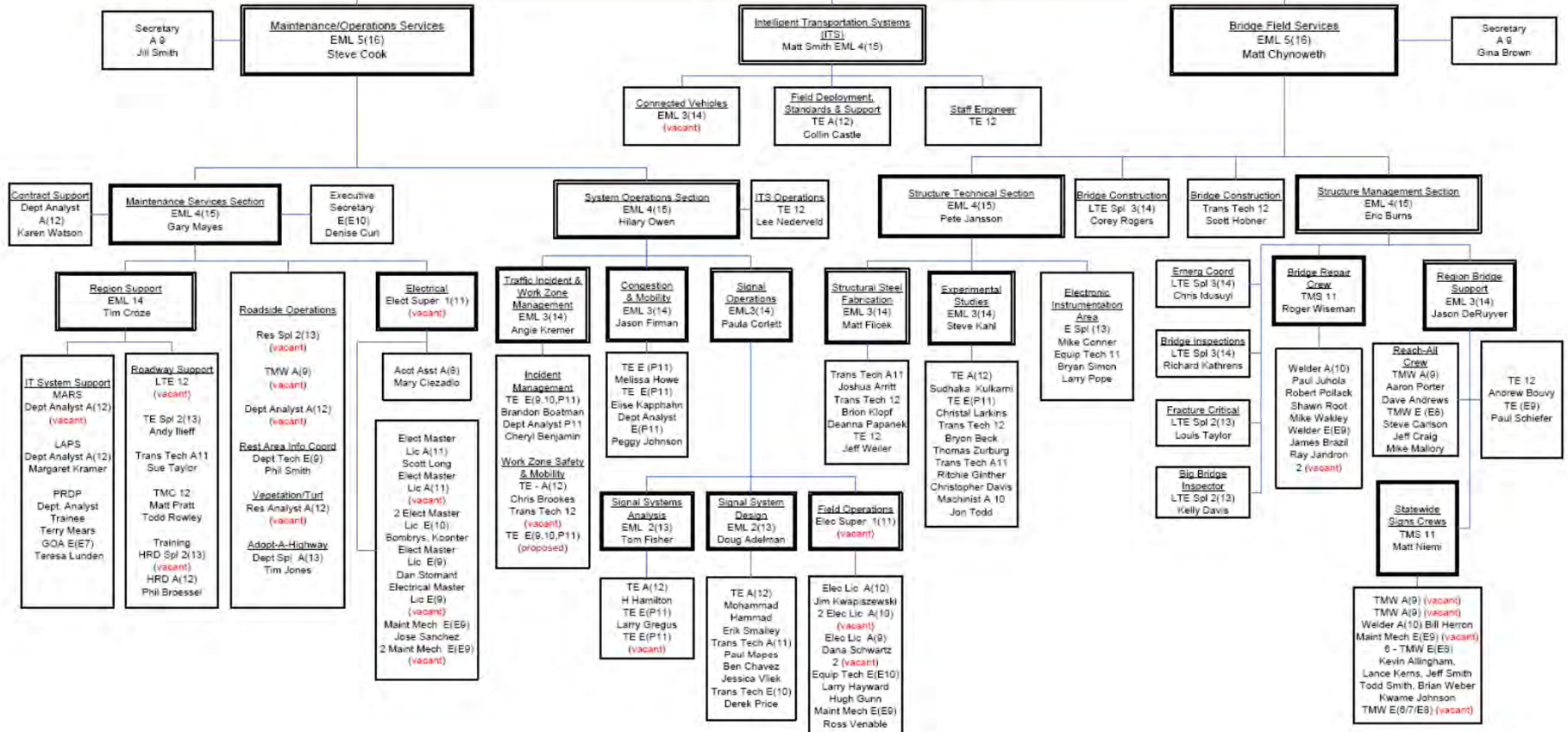
- Bridge Safety Inspection, Movable and Fracture Critical Inspections, Big Bridge Inspection, and Bridge Construction, move from Bridge Operations Section in C & T to Structures Management Section, of Bridge Field Services of the Operations Field Services (formerly Maintenance Division)
- Bridge Construction, Structural Fabrication, Experimental Studies, Electronic Instrumentation Area moves from Bridge Operations to Bridge Field Services (still located at C & T building)

BUREAU OF FIELD SERVICES

Operations Field Services Division

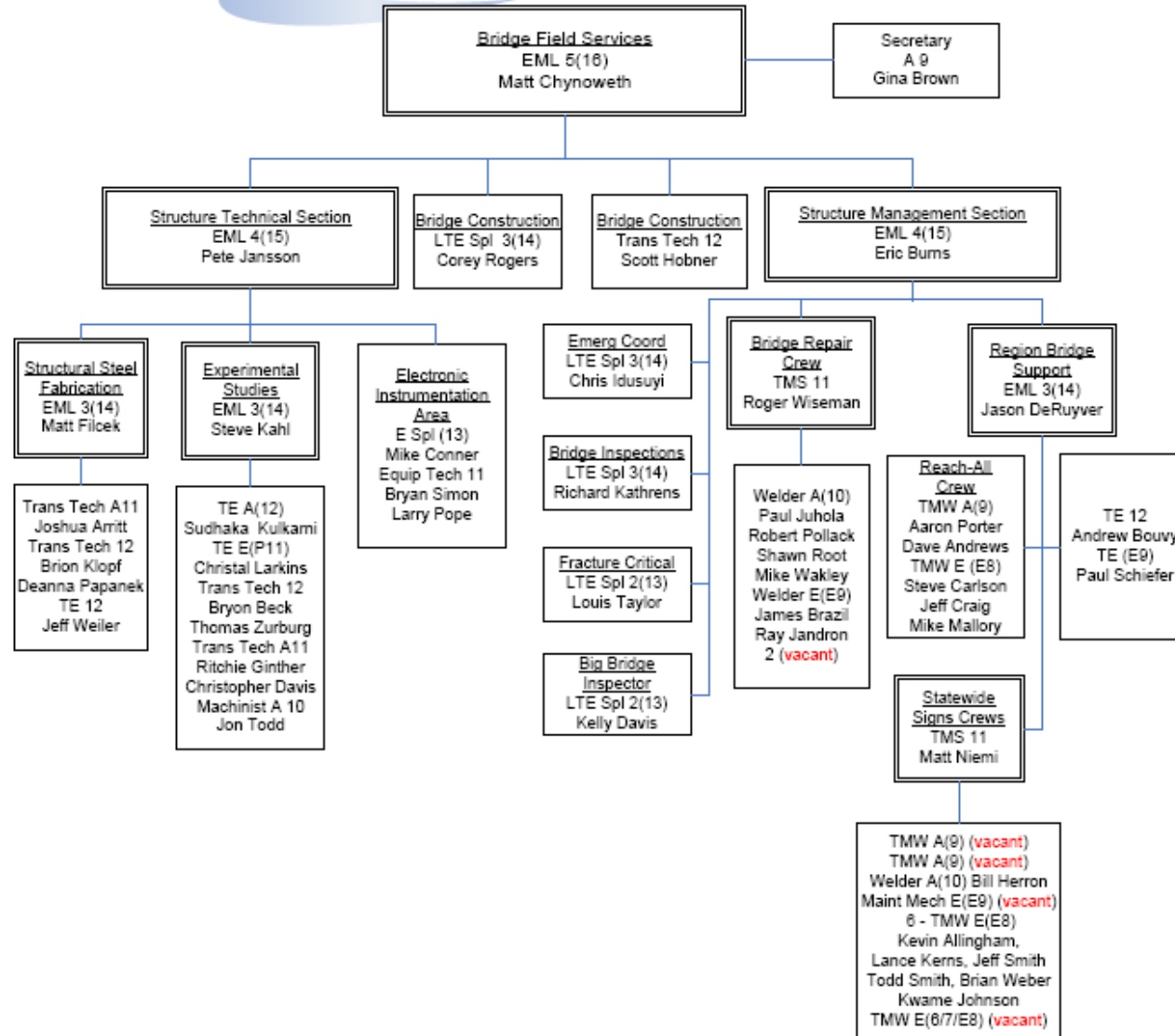


MISSION STATEMENT
Promoting economic benefit and improved quality of life through efficient operations, quality construction and innovative research.

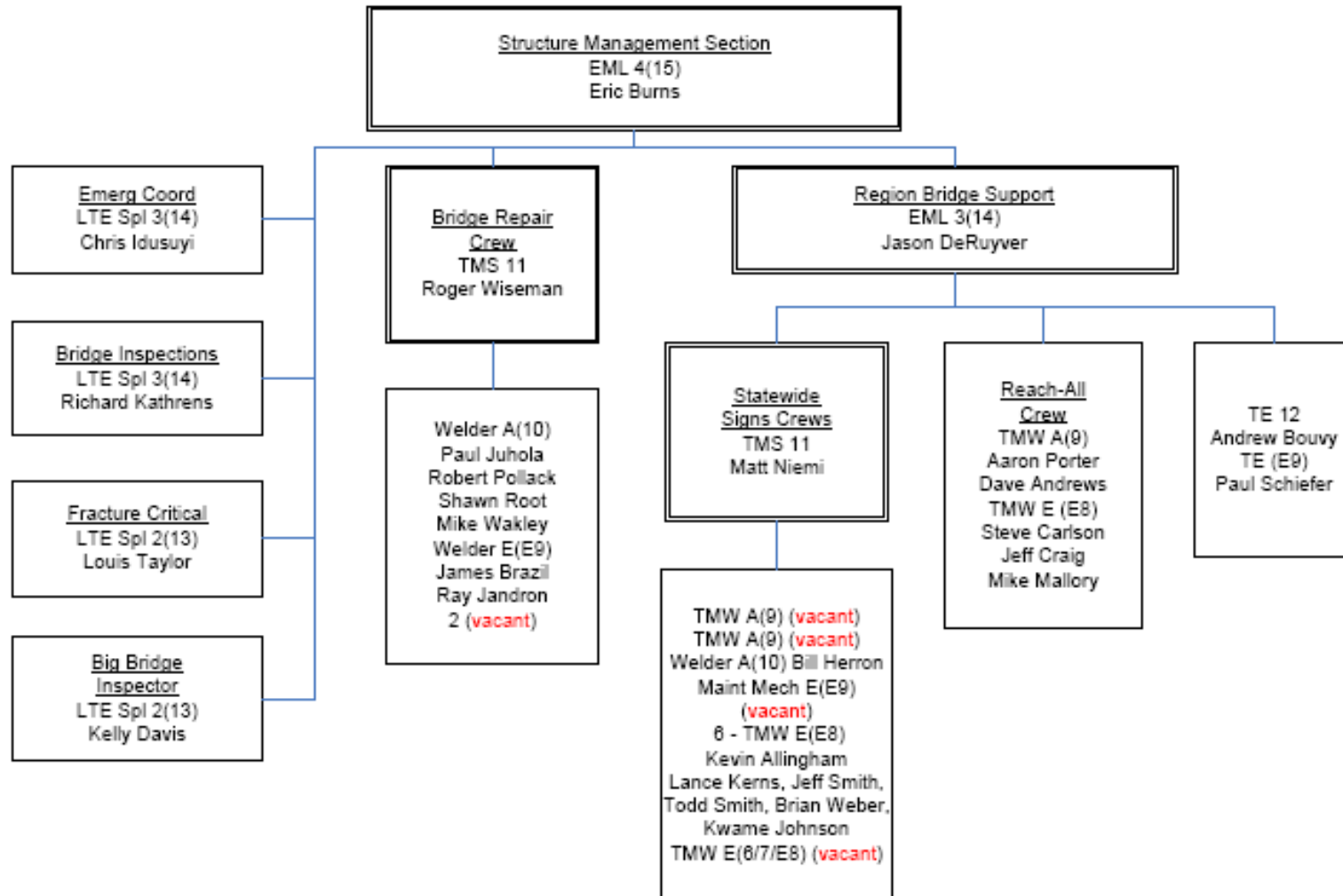


Bridge Field Services

March 12, 2012



Structure Management Section



March 12, 2012

Bridge Inspection

- **Rich Kathrens, Bridge Safety Inspections**
 - Office: 517-322-5715
 - Email: KathrensR@michigan.gov
- **Lou Taylor, Fracture Critical and Movable Bridge Inspection**
 - Office: 517-322-6092
 - Email: TaylorL15@michigan.gov
- **Kelly Davis, Big Bridge Inspection**
 - Office: 517-322-6796
 - Email: DavisK2@michigan.gov

Emergency Coordination

- Christopher Idusuyi, Emergency Coordination Engineer
 - Office: 517-322-3398
 - Email: Idusuyuc@michigan.gov
- Roger Wiseman, Bridge Crew Supervisor
 - Office: 517-322-1619
 - Email: WisemanR@michigan.gov

Region Structure Support

- **Jason Deruyver, Region Support Engineer**
 - Office: 517-322-3342
 - Email: DeruyverJ@michigan.gov
- **Andrew Bouvy, Structures Engineer**
 - Office: 517-322-3325
 - Email: BouvyA@michigan.gov
- **Paul Schiefer, Structures Engineer**
 - Office: 517-322-3379
 - Email: SchieferP@michigan.gov

Region Support

- **Aaron Porter, Reach All Crew**
 - Office: 517-322-3343
 - Email: PorterA@[michigan.gov](mailto:PorterA@michigan.gov)
- **Matt Niemi, Statewide Sign Crew**
 - Office: 517-322-3355
 - Email: NiemiM@michigan.gov

Bridge Construction

- **Corey Rogers, Bridge Construction Engineer**
 - Office: 517-322-3320
 - Email: RogersC5@michigan.gov
- **Scott Hobner, Bridge Construction Technician**
 - Office: 517-322-5120
 - Email: HobnerS@michigan.gov

Pile Driving Charts

- **Tony Pietrangelo, Geotechnical Construction Engineer**
 - Office: 517-322-1633
 - Email: PietrangeloA@michigan.gov
- **Corey Rogers, Bridge Construction Engineer**
 - Office: 517-322-3320
 - Email: RogersC5@michigan.gov

Questions?