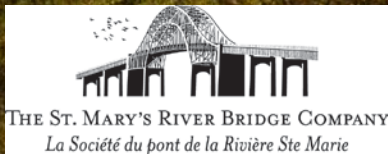


Sault Ste. Marie International Bridge Celebrating 50 Years of International Friendship

International Bridge 50th Anniversary
Michigan Bridge Conference
March 20, 2013
Howell, Michigan



*The Sault Ste. Marie International Bridge
"Bridging Our Past.....Connecting Our Future"*



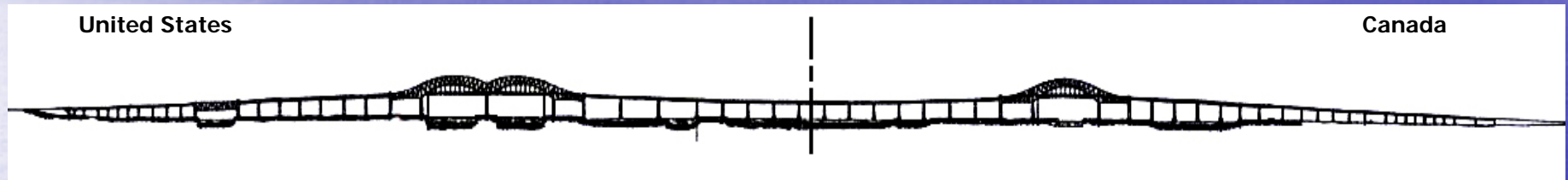
The Sault Ste Marie International Bridge

Governance and Operation

International Bridge Organizational Structure



Border



Ownership of Assets

Michigan Department of
Transportation

St. Mary's River Bridge Company

Governance

Sault Ste. Marie Bridge Authority

Operation/Management/Maintenance

International Bridge Administration

International Bridge Organizational Structure Policy and Governance



Sault Ste. Marie Bridge Authority

Board of Directors

Michigan Representatives

Mr. Stuart Bradley

Ms. Linda Hoath
(2013 Vice Chair)

Mr. Scott Shackleton

Mr. Nicholas White

Canadian Representatives

Ms. Helen Gillespie

Mr. James McIntyre
(2013 Chair)

Mr. Glenn Hewus

Mr. Rick Talvitie

SSMBA and IBA Mission



"Bridging Our Past....Connecting our Future"

- "The Sault Ste. Marie Bridge Authority and the International Bridge Administration are committed to the safe and efficient movement of people and goods across the International Bridge between Sault Ste. Marie, Ontario and Sault Ste. Marie, Michigan. The International Bridge is an asset which must be maintained and preserved to protect the mobility of local, state and provincial residents and to promote U.S. and Canadian trade, tourism and regional economic development."

Bridge Structure

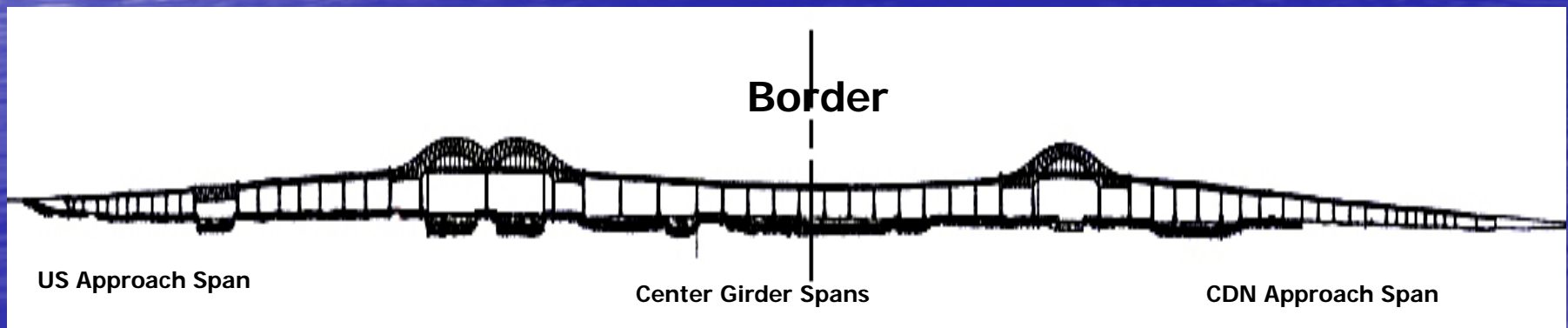
- 28' clear, 2 lane roadway, 34' wide deck, 9,279.17' long
- 63 spans; 62 piers

U.S. Spans

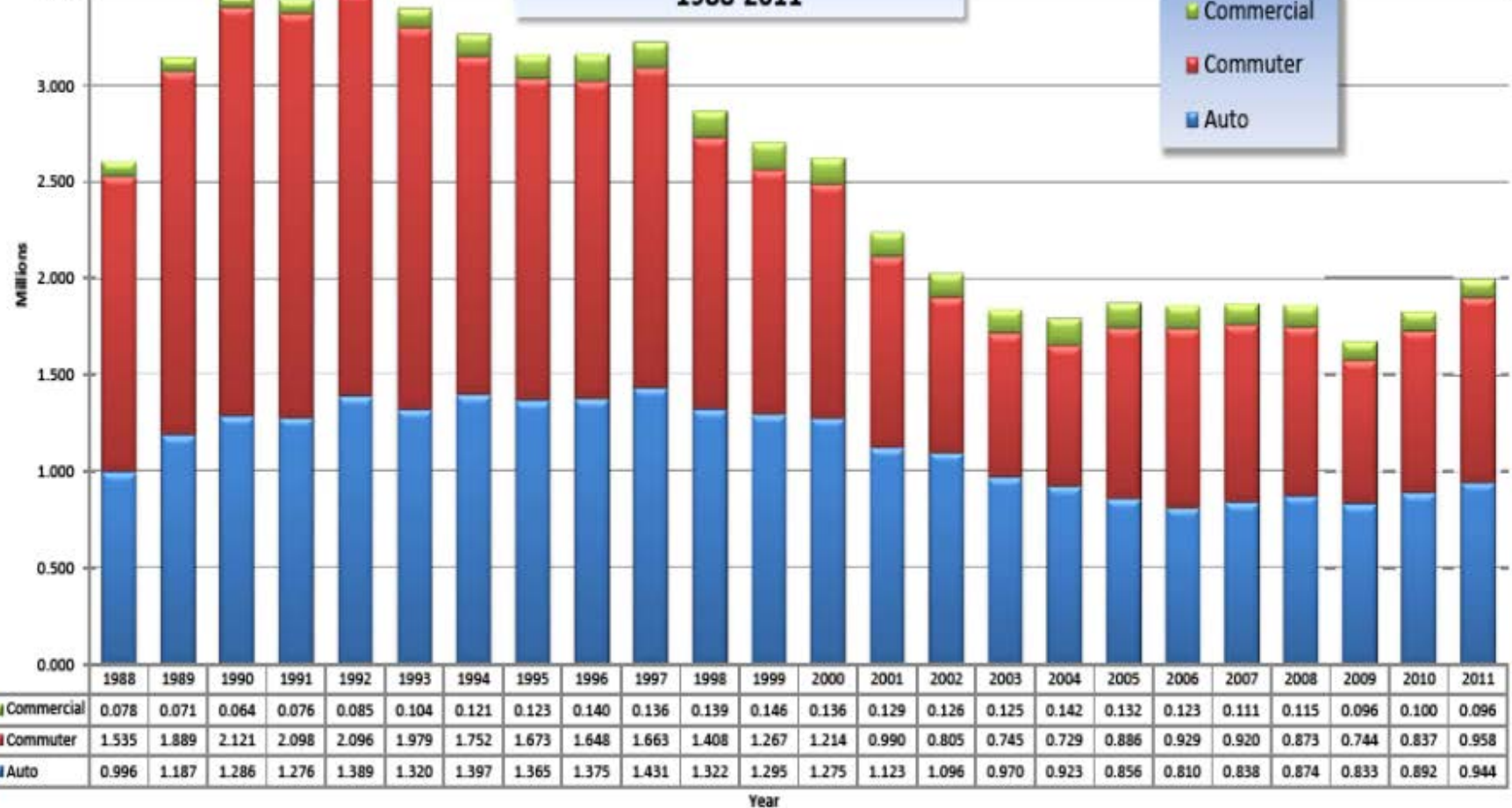
- 30 spans total
- 11 simple supported girder spans (63'-93')
- 14 continuous plate girder spans (135', 245', 165' lengths)
- Double truss arch (max span=430', length=1,260')
- Parallel chord deck truss over U.S. over power canal (279')

Canadian Spans

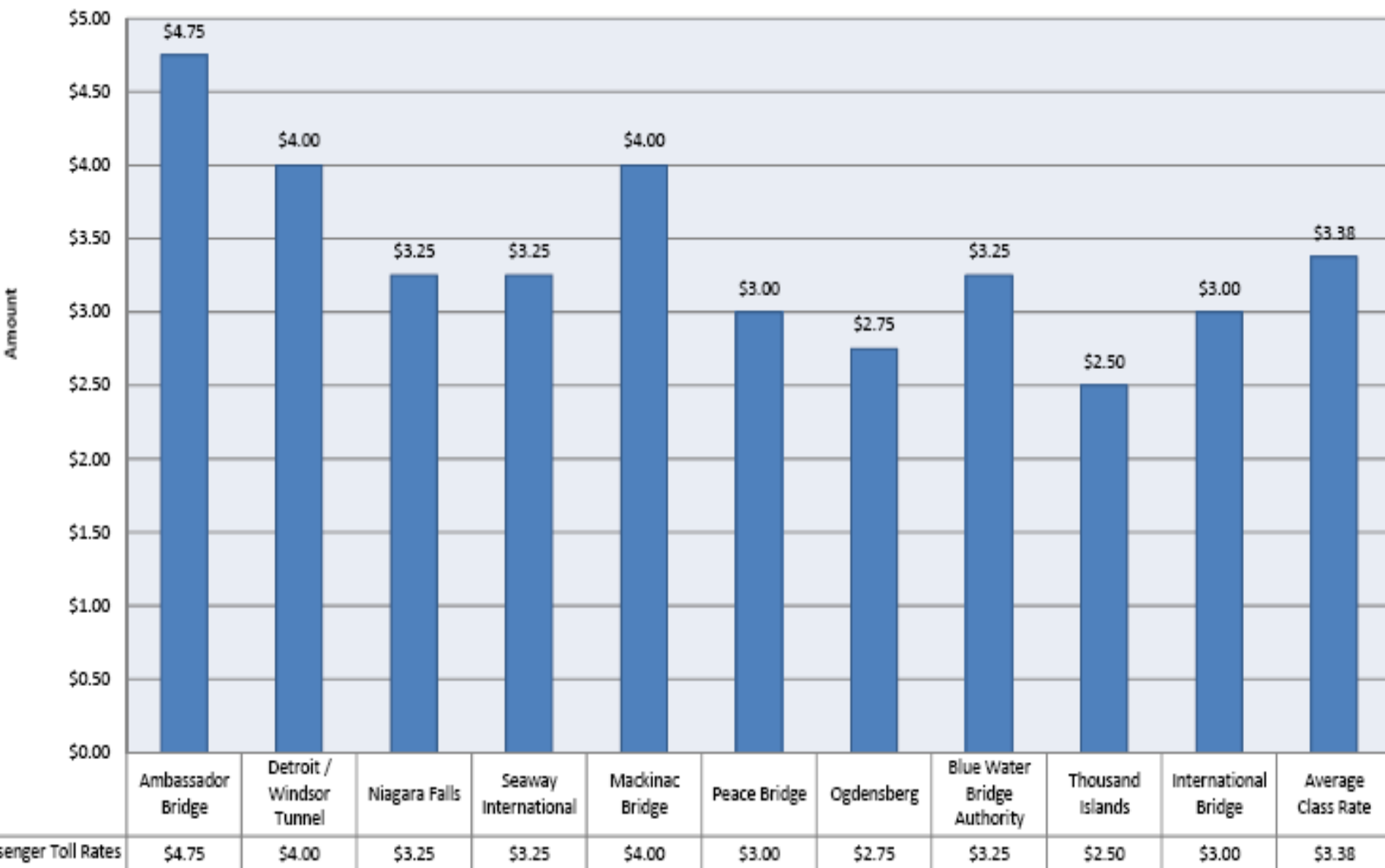
- 32 spans total
- 21 simple supported girder spans (63'-123')
- 8 continuous plate girder spans (165')
- Single truss arch (max span=430', length=830')



Sault Ste. Marie International Bridge Historical Traffic 1988-2011



Toll Rate Comparison - Passenger Vehicles



Historic Auto Toll Rate Summary

The toll increase implemented on April 1, 2007 was the first U.S. toll rate increase since 1968

Date	U.S. Currency	CDN Currency*
1962	\$1.25	\$ 1.25
1968	\$1.50	\$ 1.50
1995	\$1.50	\$ 1.75
January, 2002	\$1.50	\$ 2.25
October, 2003	\$1.50	\$ 2.10
April, 2004	\$1.50	\$ 2.00
April, 2005	\$1.50	\$ 1.85
April, 2006	\$1.50	\$ 1.75
October, 2006	\$1.50	\$ 1.70
April, 2007	\$2.00	\$ 2.25
October, 2007	\$2.00	\$ 2.20
April, 2008	\$2.00	\$ 2.00
April, 2009	\$2.50	\$ 2.95
October, 2009	\$2.50	\$ 2.90
April, 2010	\$3.00	\$ 3.20
October, 2010	\$3.00	\$ 3.10
April, 2011	\$3.00	\$ 3.00
October, 2011	\$3.00	\$ 2.90
April, 2012	\$3.00	\$ 3.00

*Changes in Canadian Currency rates after 1995 are due to semi-annual equity adjustments

2012 Budget Summary

REVENUES

Toll collections	\$7,088,953
Lease and rental revenues	400,000
Interest revenues	43,000
Other revenues	560,680
Total Revenues	<u>\$8,092,633</u>

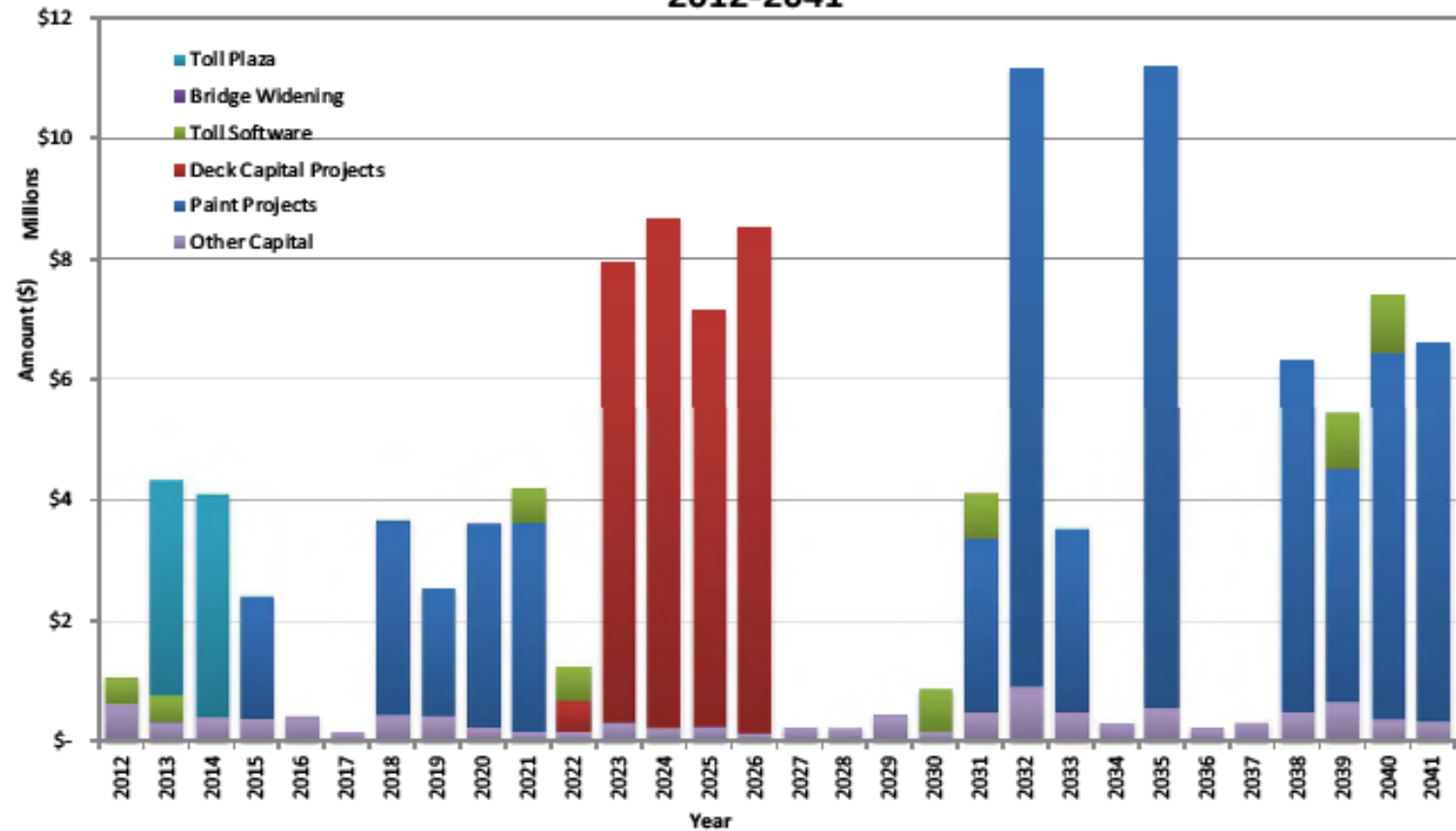
EXPENDITURES

Operational expenditures	\$3,555,840
Capital bridge maintenance	1,055,780
Other expenditures	\$635,230
Total Expenditures	<u>\$5,246,850</u>

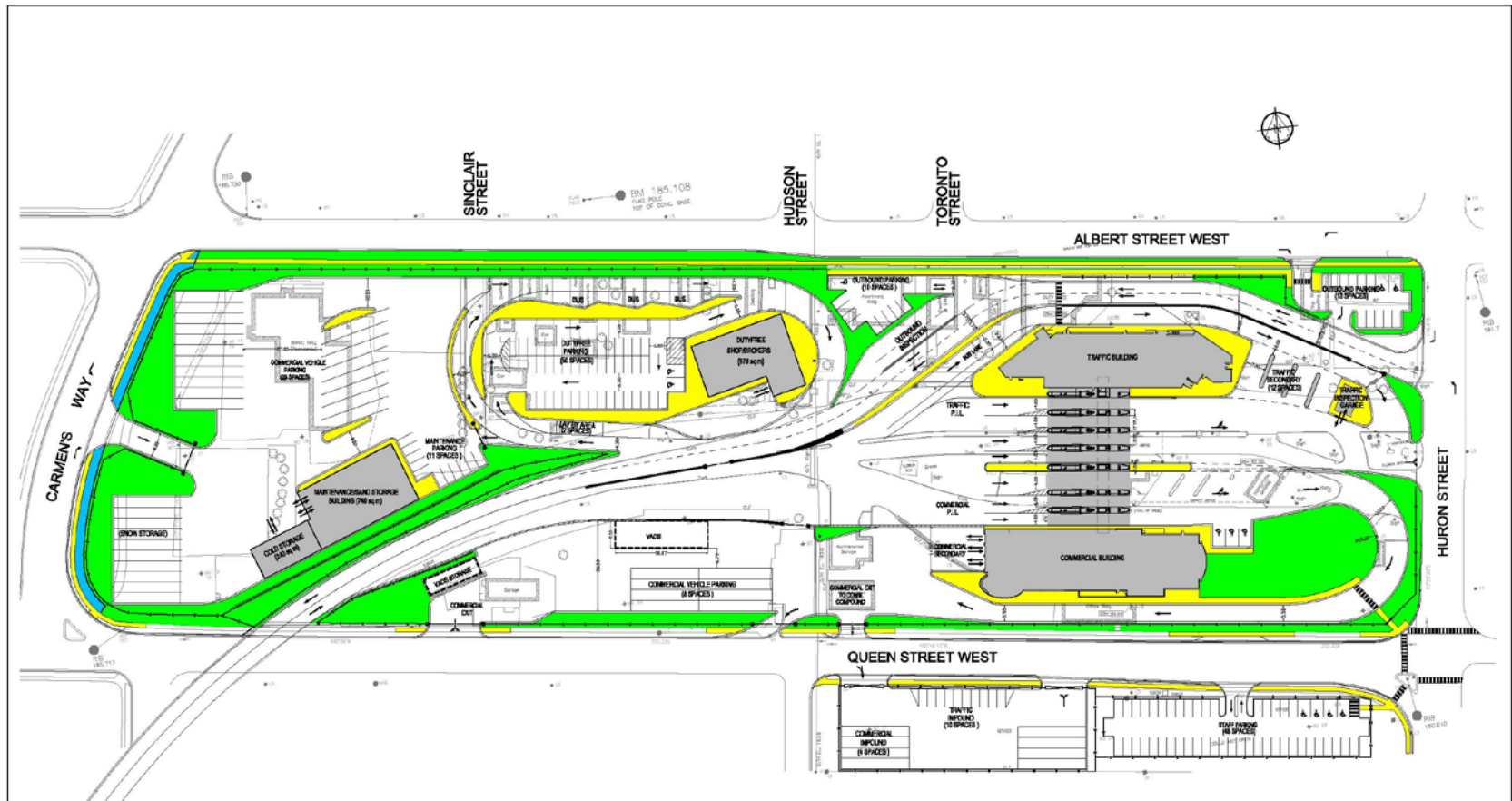
Excess (deficiency) of revenues over expenditures	<u>\$2,845,783</u>
---	--------------------

Fund Balance-Beginning	\$7,490,846
Fund Balance-Ending	<u>\$10,336,629</u>

Sault Ste. Marie Bridge Authority Combined Capital Expenditures 2012-2041



Canada Border Services Agency (CBSA) Plaza Expansion



Funding: \$44.1 M Canadian Government

5.0 M Bridge Toll Revenue for Property Purchases

Construction Start: 2013

Construction Complete: 2016



Project		
Sault Ste. Marie Canadian Plaza Modernization		
DART Committee Meeting		
Drawing Landscape		
Scale	Date	Drawing No.
	February 24, 2011	11

Aerial Photo Enhancement illustrating Southbound Bottleneck Solution: proposed two additional bridge lanes on Southern 850 ft of bridge

(est. Project Cost \$13M - unfunded)

N
↑

- a) Existing single northbound lane
- b) Existing single southbound lane
- c) Proposed FAST lane
- d) Proposed NEXUS lane

Proposed:

850 ft bridge
widening – 2
additional lanes

CBP Plaza widening project to increase
to 5 lanes (1 per booth) completed in
2011

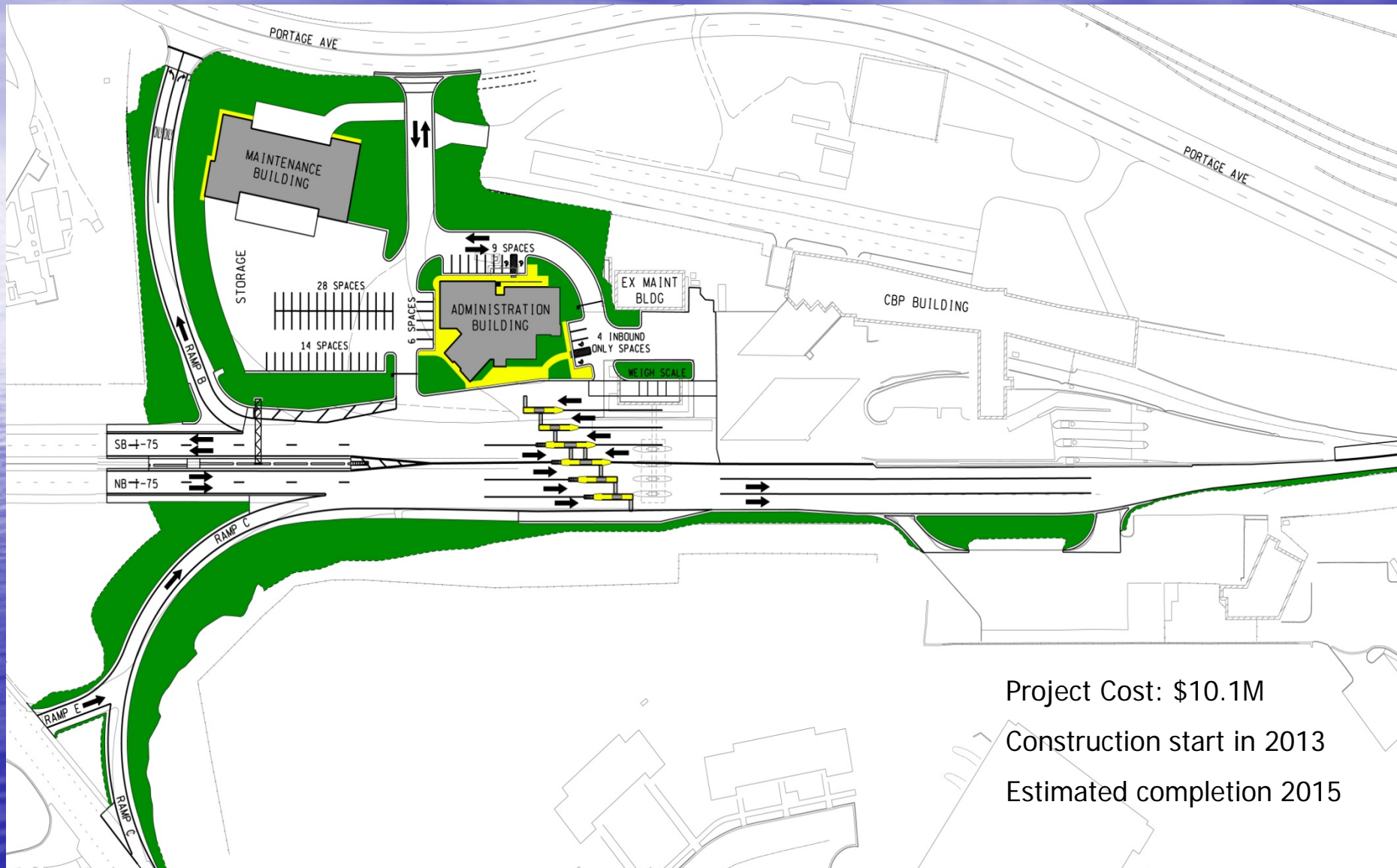
Two current FAST
booths

NEXUS compliant
booth

*FAST: Free and Secure Trade Border Security Program

NEXUS: Pre-screened passenger vehicle border security program

IBA Toll Plaza Expansion



Project Cost: \$10.1M

Construction start in 2013

Estimated completion 2015

The Sault Ste Marie International Bridge

From the Historic Perspective















Wm Dunlop

SAINT SAUVEUR,
ONT.





JOHN A McPHAIL
SAULT STE MARIE

FERRY FARES

<u>Passengers</u>	<u>Each Way</u>	<u>Return</u>
One passenger—Adult	10¢	20¢
One child under 10 years of age	5¢	10¢

<u>Horse Vehicles</u>		
Single horse vehicle or truck not loaded,, with driver	35¢	70¢
Two horse vehicle or truck not loaded , with driver	50¢	\$1.00
Moving van not loaded, with driver	85¢	\$1.20

<u>Motor Vehicles</u>		
One 5 passenger automobile or under with driver	75¢	\$1.00
One over 5 passenger heavy automobile or long wheel base, with driver	85¢	\$1.20
One auto truck not loaded, 1 ton capacity or under with driver	75¢	\$1.00
One motorcycle and rider	25¢	
One motorcycle and rider with side car	25¢	

<u>Miscellaneous</u>		
One horse and rider	25¢	50¢

<u>Baggage & Freight</u>		
Baggage per 100lbs.	10¢	
Minimum charge per shipment	10¢	

Fares & Tariffs changed by Order in Council February 13th, 1953

<u>Passengers</u>		
Adult	15¢	25¢
Children	10¢	15¢

<u>Motor Vehicles</u>		
Passenger vehicle not over 18ft in length, with driver	\$1.00	\$1.50
Passenger vehicle, over 18 ft in length, with driver	\$1.25	\$2.00





Chairman—James E. Brophy
 Vice Chairman—R. C. Kline, Jr.
 Member—H. W. Corey

Canadian Representatives
 A. Rendall Dick
 William M. Hogg

For information write:
 David W. Ripley, Secretary-Treasurer
 P. O. Box 317
 Sault Ste. Marie, Michigan

INTERNATIONAL BRIDGE AUTHORITY TOLL SCHEDULE

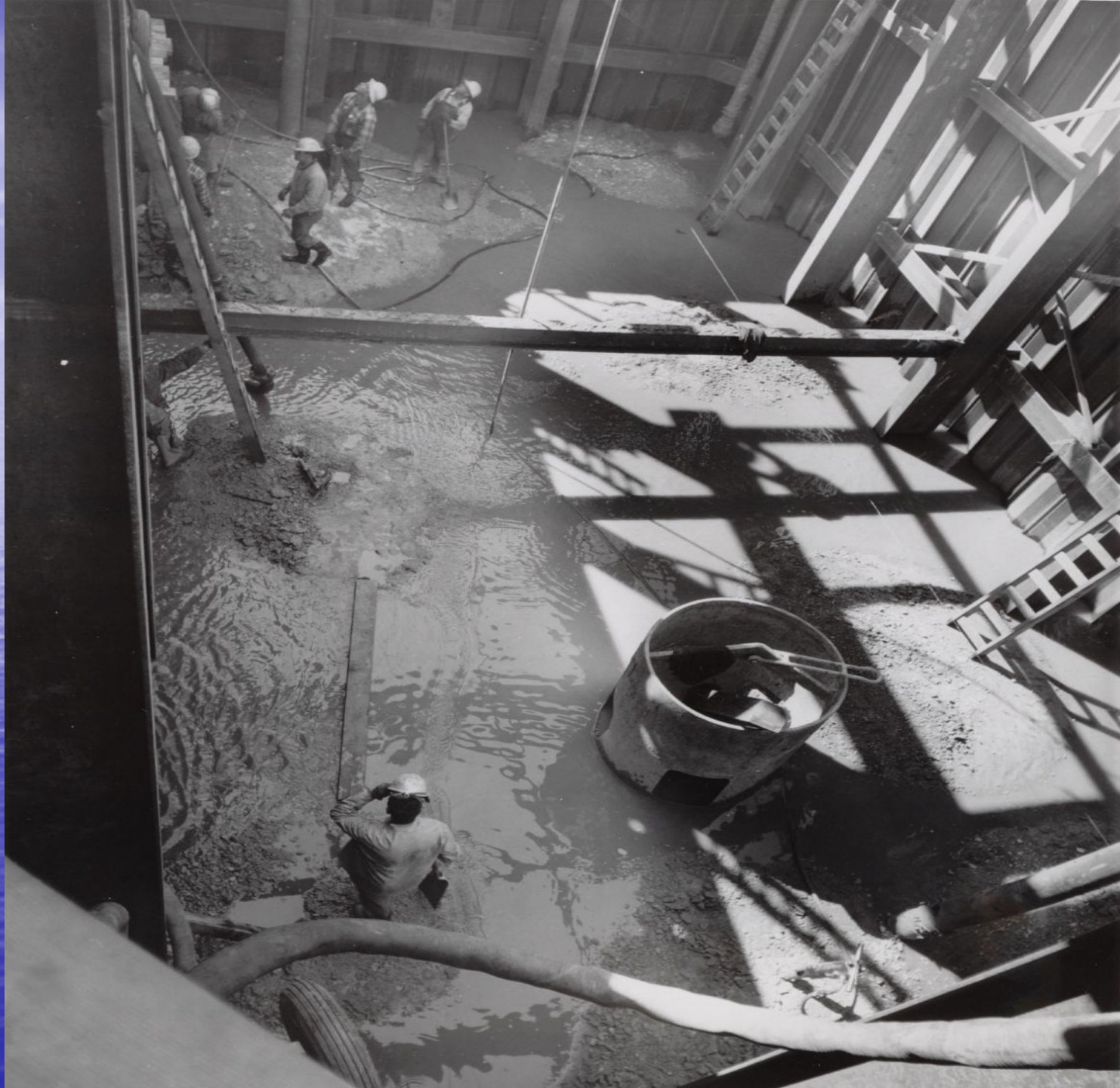
Vehicle Type	One Way	Round Trip
Passenger Car	\$1.25	\$1.80
(Including Driver and all Passengers)		
Passenger Car with Boat or Utility Trailer (1-Axle)	2.00	3.00
Passenger Car with House Trailer	2.50	4.00



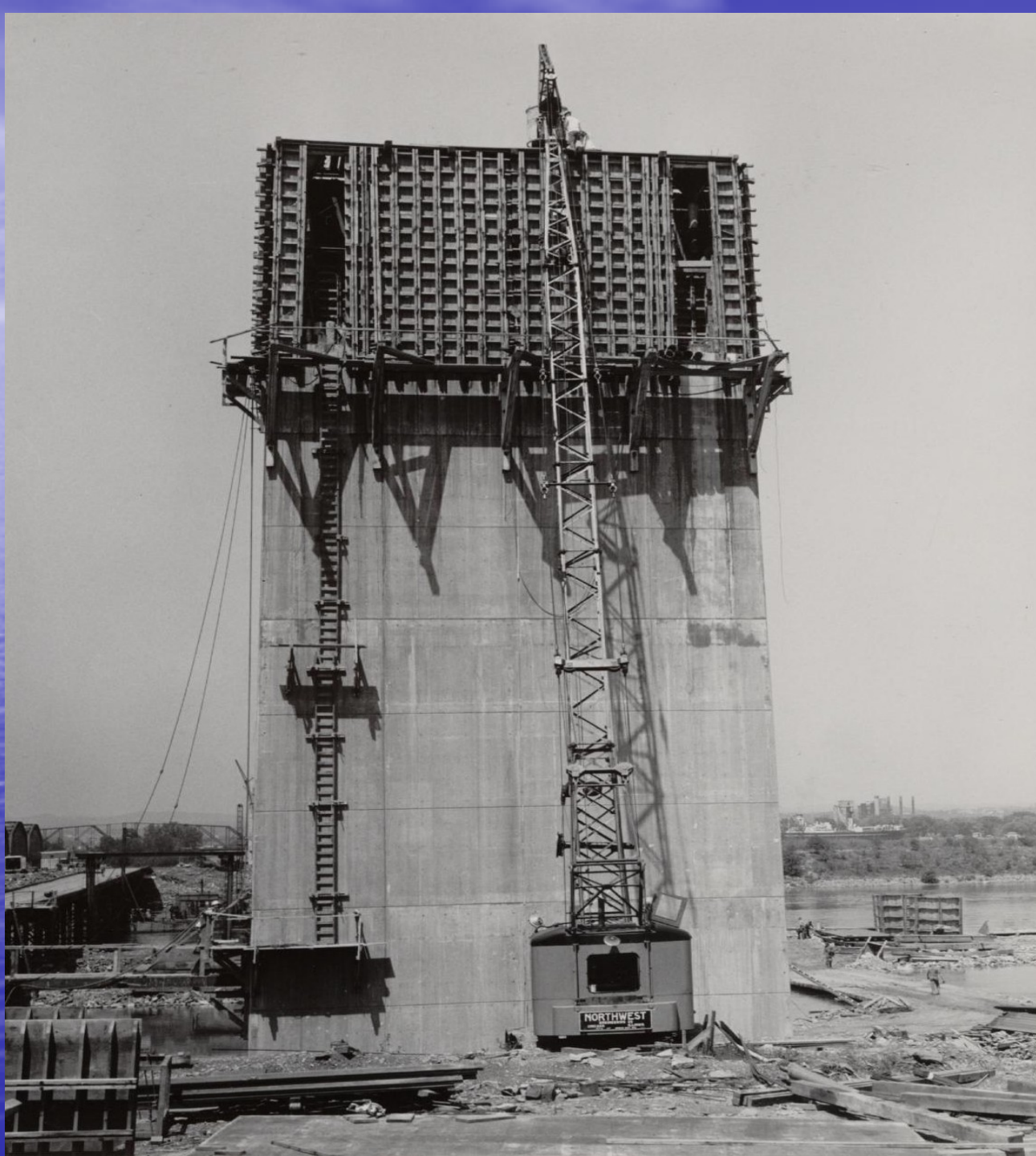


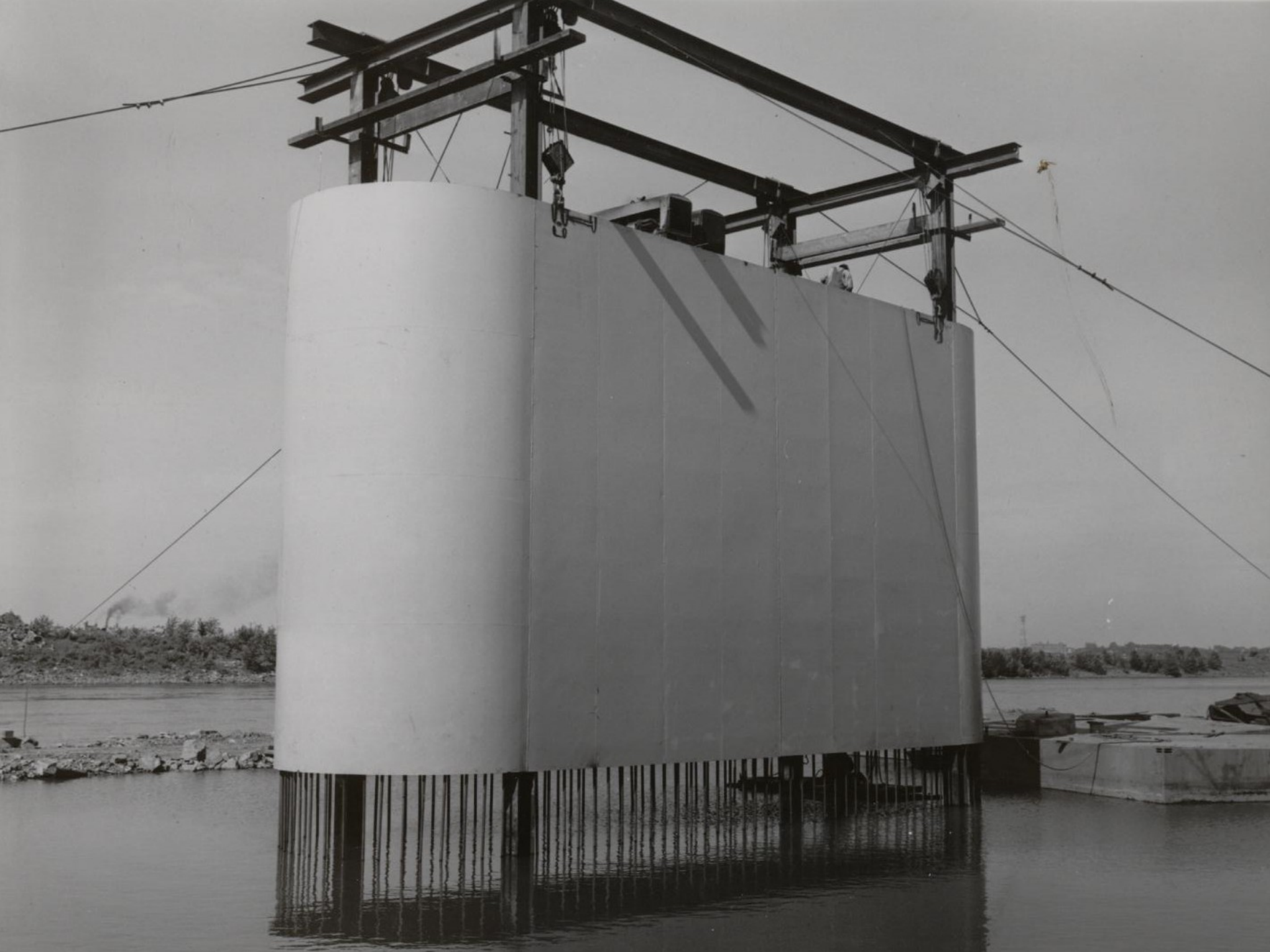
























International Bridge Authority

Contractor Bethlehem Steel Co.

Photo No. B.S.P. 70 Contract No. 2

Date:- Mar. 15, 1962

View of 85 ton traveler completing erection



























Only horse and buggy to cross
International Bridge - Apr. /62



H. IRWIN, AUSTRALIAN ON CROSS CANADA TOUR. Aug 14, 1967.



"On the Border."

WILFRED & TOURIST

50th Anniversary Celebration Events

Celebrating International Friendship

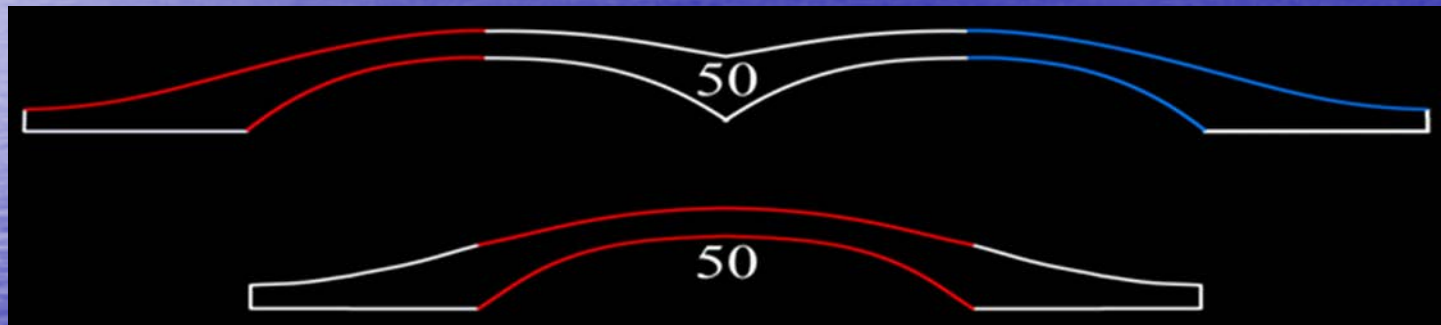


Sault Ste. Marie
International Bridge
1962 - 2012

"Celebrating International Friendship"

50th Anniversary Bridge Lighting

Thursday, Jun 28th











50th Anniversary Bridge Walk & Bicycle Parade

Saturday, June 30th













50th Anniversary Banner

May 21st – October 31st



October 31, 2012 Anniversary Date Celebration

- It was on October 31, 1962 around 3:00 PM when the first paying customers rolled across the bridge.
- Since then, nearly 93 million vehicles and over \$50 billion (USD) in trade has crossed.
- This anniversary date was celebrated with free commemorative gifts given to bridge crossers by toll attendants and a 50 year commemorative plaque unveiling.

Any Questions?



For additional information visit our website:

www.michigan.gov/iba

Check out our webcams :

www.saultbridge.com