A satellite image of the Great Lakes region, showing the five Great Lakes (Superior, Michigan, Huron, Erie, and Ontario) surrounded by land. A semi-transparent blue box with a yellow border is overlaid on the top left of the image, containing the title and presenter information.

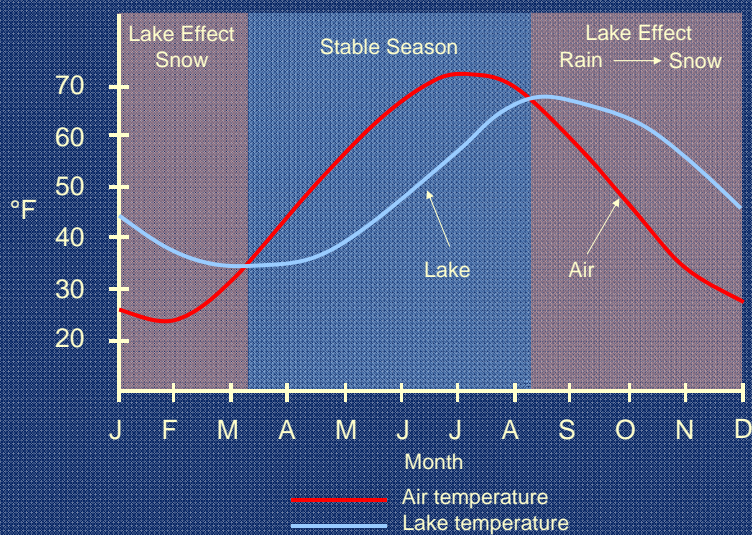
Snowfall Forecasting challenges in the Great Lakes

Jim Keysor - NWS Gaylord

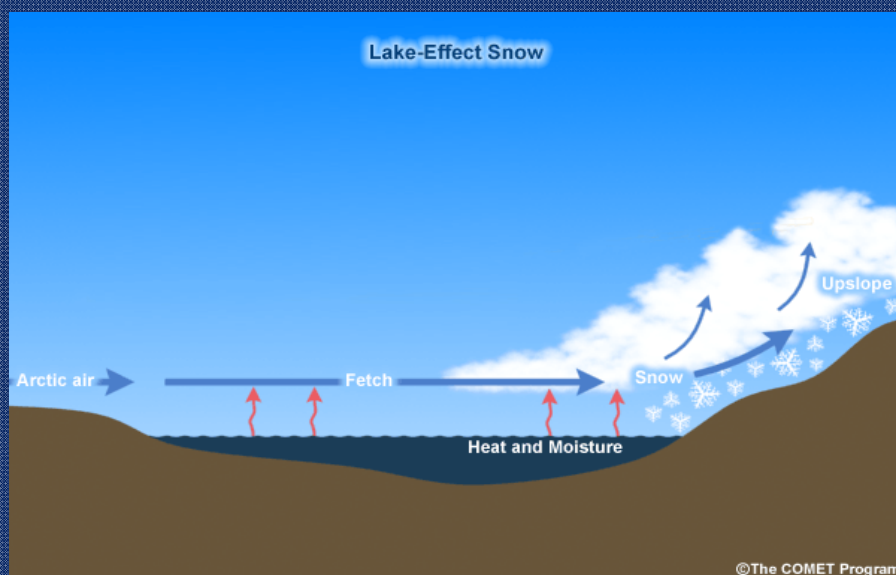
Presentation Outline Topics

- An overview of lake effect snow
- Forecast challenges
- Tools to help / Decision Support Services
- Sneak peak at the upcoming winter

Mean Lake/Air Temperatures (for Lake Michigan)



How does lake effect snow form?



Lake effect snow on satellite

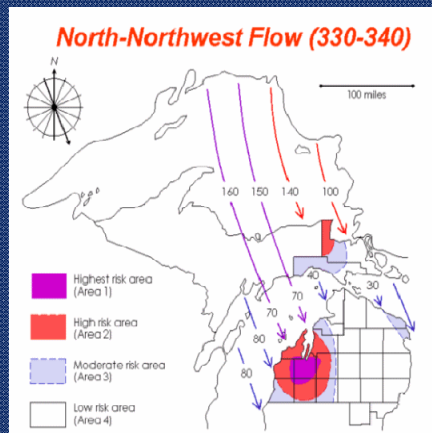


Snowfall forecast challenges

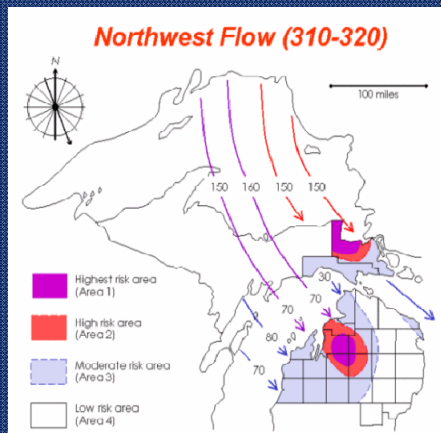


Challenge #1: Slight variations in wind direction

North-Northwest Flow

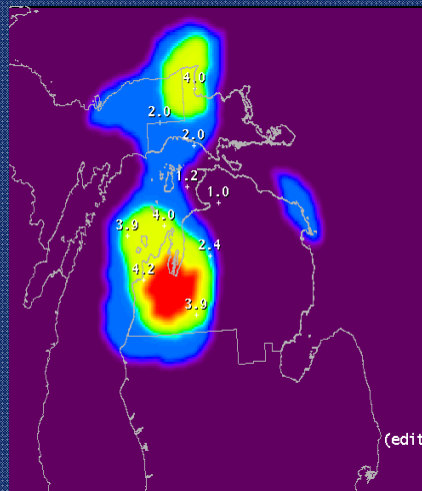


Northwest Flow

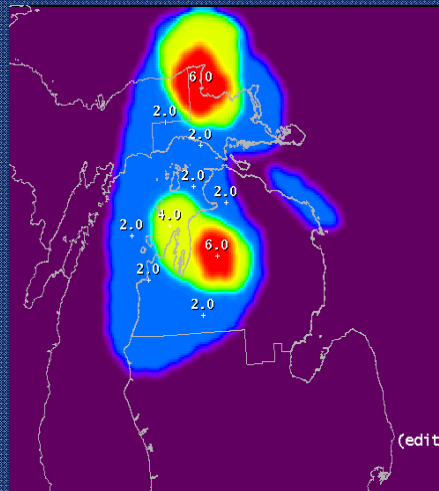


Challenge #1: Slight variations in wind direction

North-Northwest Flow



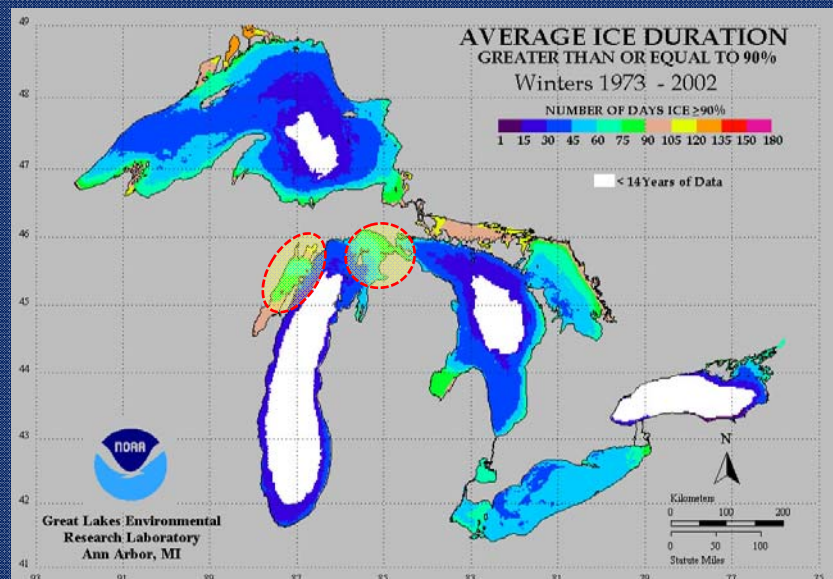
Northwest Flow



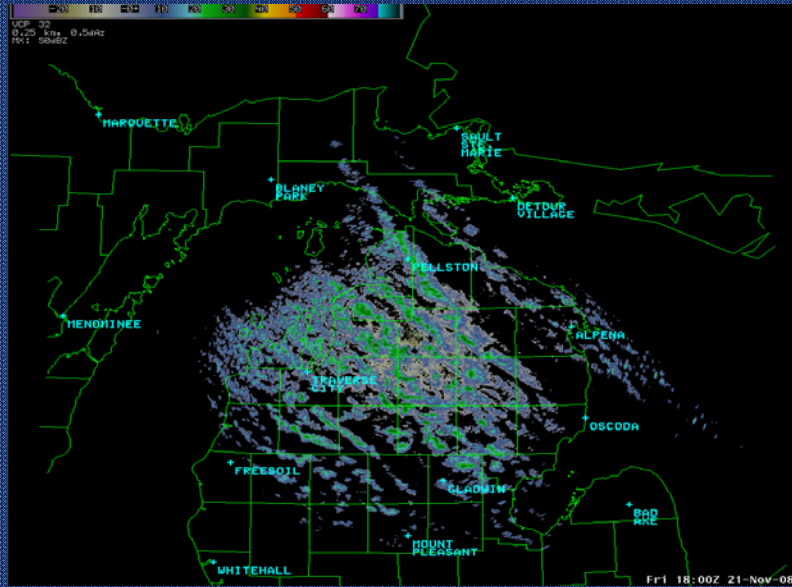
Challenge #2: Ice Cover



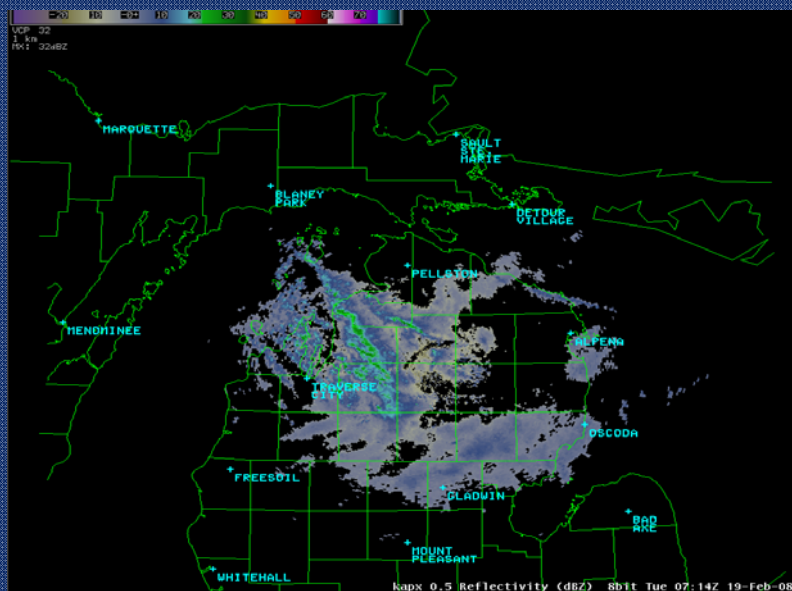
Average days of >90% ice cover



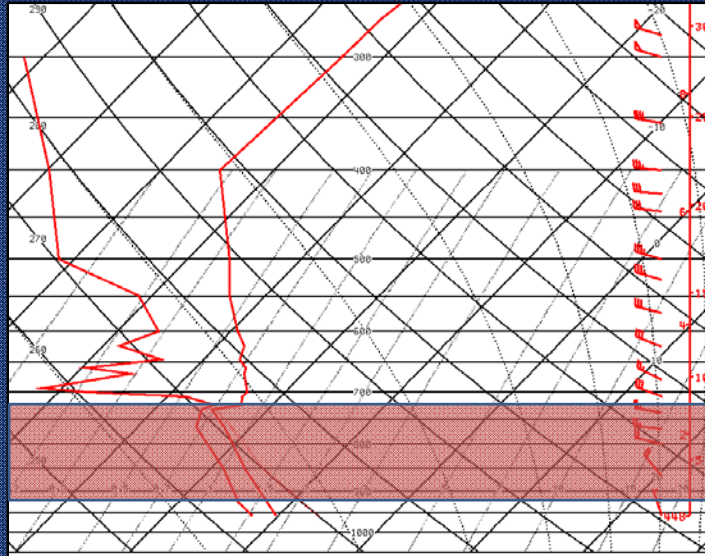
Northwest winds - No Ice cover



Northwest winds - Ice cover



Challenge #3: Snowflakes and temperatures



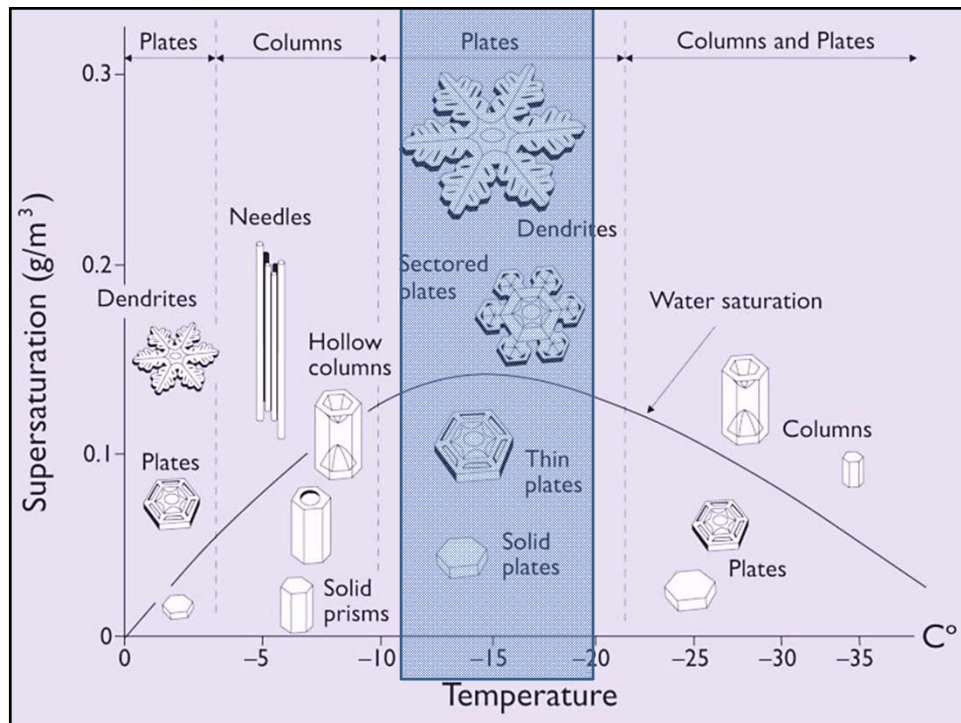
Temperatures aloft – the key



As temperatures aloft get colder, snowflakes become less dense. Less dense snowflakes may accumulate more quickly.

But as temperatures around 5000 feet fall below -20 degrees Celsius, snowfall intensity and accumulation drops off as snowflake size gets much smaller.





Dendrite Snowflake

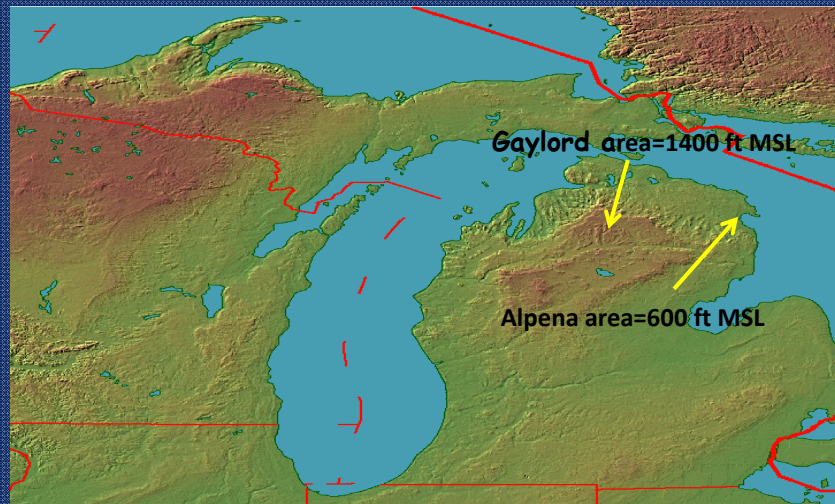


Column Snowflake

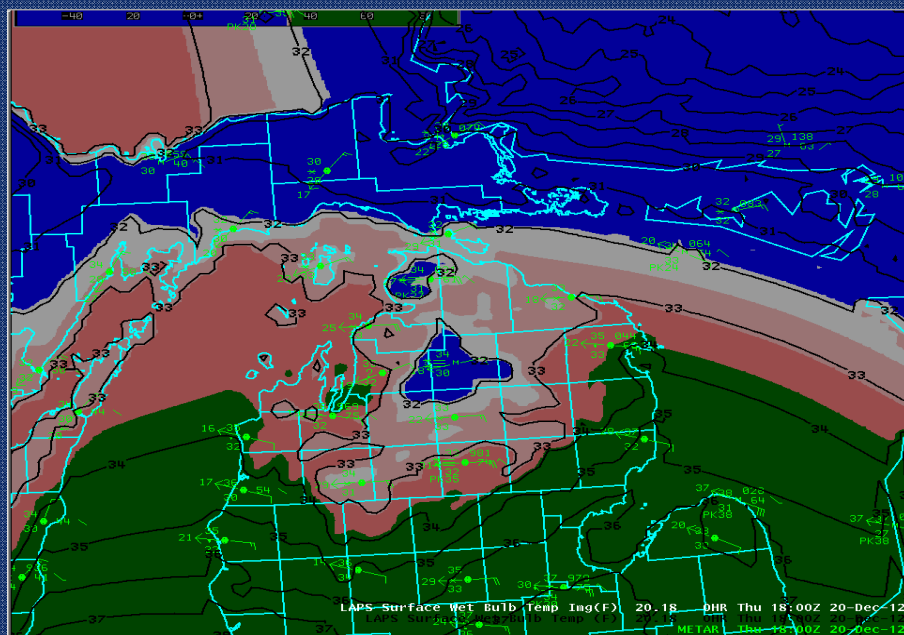


Challenge #4: Elevation

During snow events, temperatures drop approximately 1 degree Fahrenheit for every 300 foot rise in elevation



December 20-21, 2012 Snowstorm



December 20-21, 2012 Snowstorm

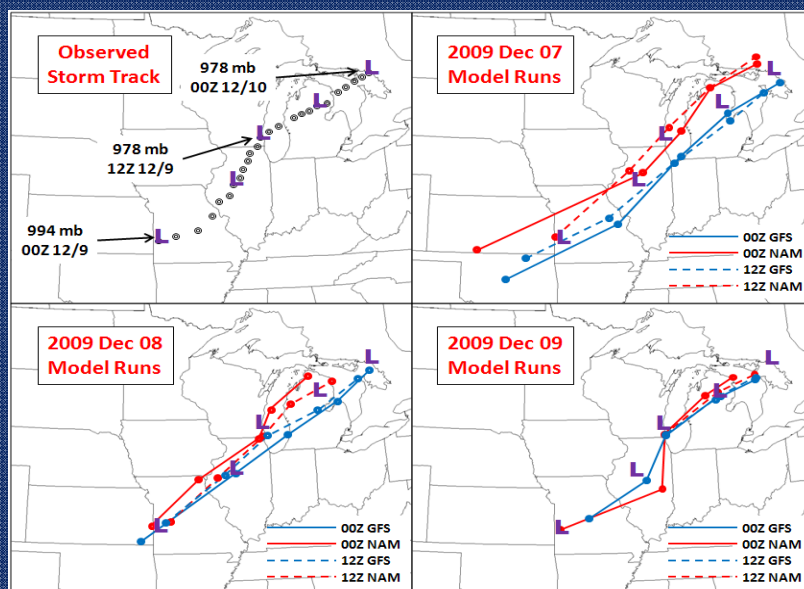
Gaylord Observations Elevation 1400 feet

9:53 AM	32.0 °F	24.2 °F	30.0 °F	92%	29.74 in	0.5 mi	East	9.2 mph	20.7 mph	0.04 in	Fog , Snow	Snow
10:53 AM	32.0 °F	23.6 °F	30.9 °F	96%	29.71 in	0.2 mi	East	10.4 mph	19.6 mph	0.07 in	Fog , Snow	Snow
11:53 AM	32.0 °F	24.2 °F	30.9 °F	96%	29.64 in	0.2 mi	East	9.2 mph	25.3 mph	0.11 in	Fog , Snow	Snow
12:36 PM	33.8 °F	24.8 °F	30.2 °F	87%	29.52 in	0.5 mi	East	12.7 mph	20.7 mph	0.04 in	Fog , Snow	Snow
1:31 PM	32.0 °F	22.5 °F	30.2 °F	93%	29.44 in	0.2 mi	East	12.7 mph	24.2 mph	0.03 in	Fog , Snow	Snow
1:53 PM	32.0 °F	20.8 °F	30.9 °F	96%	29.43 in	-	East	17.3 mph	31.1 mph	0.05 in	Snow	Snow

Alpena Observations Elevation 600 feet

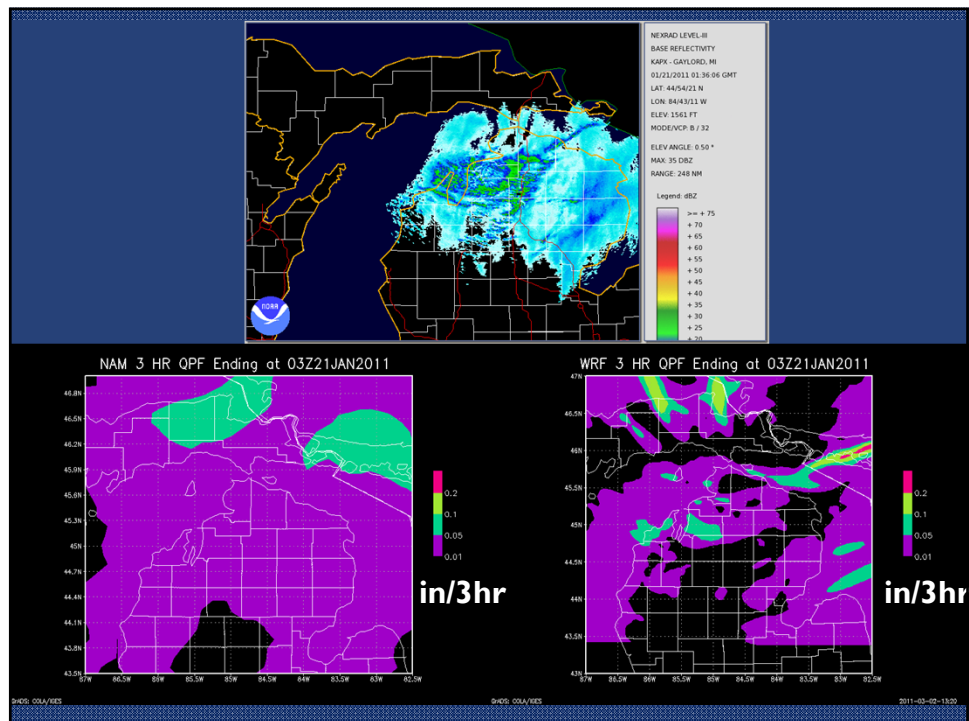
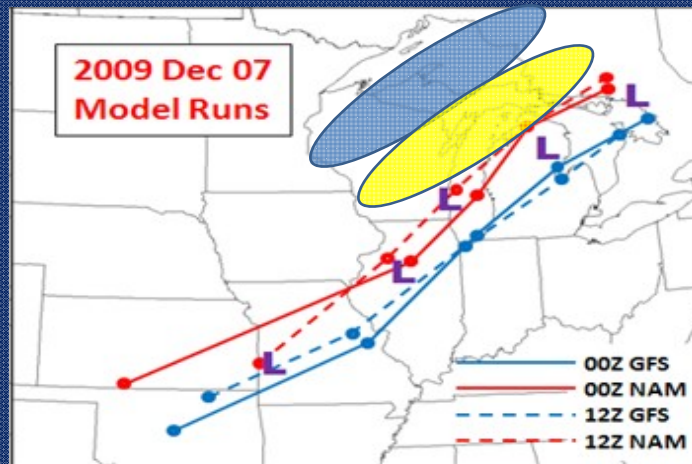
10:54 AM	35.1 °F	24.5 °F	33.1 °F	92%	29.80 in	5.0 mi	ESE	18.4 mph	27.6 mph	0.00 in	Rain	Light Rain
11:11 AM	35.6 °F	24.8 °F	33.8 °F	93%	29.76 in	2.0 mi	ESE	19.6 mph	33.4 mph	0.03 in	Rain , Snow	Light Rain
11:17 AM	33.8 °F	22.8 °F	33.8 °F	100%	29.76 in	1.5 mi	ESE	18.4 mph	31.1 mph	0.05 in	Rain , Snow	Light Rain
11:38 AM	33.8 °F	23.2 °F	32.0 °F	93%	29.74 in	0.8 mi	ESE	17.3 mph	31.1 mph	0.09 in	Snow	Light Snow
11:48 AM	33.8 °F	23.5 °F	32.0 °F	93%	29.73 in	0.2 mi	ESE	16.1 mph	25.3 mph	0.12 in	Fog , Snow	Heavy Snow
11:54 AM	33.1 °F	21.9 °F	30.9 °F	92%	29.74 in	0.2 mi	ESE	18.4 mph	27.6 mph	0.14 in	Fog , Snow	Heavy Snow
12:06 PM	33.8 °F	22.5 °F	32.0 °F	93%	29.70 in	0.5 mi	ESE	18.4 mph	25.3 mph	0.03 in	Fog , Snow	Snow
12:22 PM	33.8 °F	24.8 °F	32.0 °F	93%	29.68 in	2.5 mi	East	12.7 mph	23.0 mph	0.04 in	Snow	Light Snow
12:26 PM	33.8 °F	24.8 °F	32.0 °F	93%	29.67 in	5.0 mi	East	12.7 mph	23.0 mph	0.04 in	Snow	Light Snow
12:47 PM	35.6 °F	25.2 °F	33.8 °F	93%	29.65 in	8.0 mi	East	18.4 mph	26.5 mph	0.04 in		Overcast
12:54 PM	35.1 °F	24.8 °F	33.1 °F	92%	29.66 in	8.0 mi	East	17.3 mph	25.3 mph	0.04 in	Rain	Light Rain

Challenge #5: Computer models

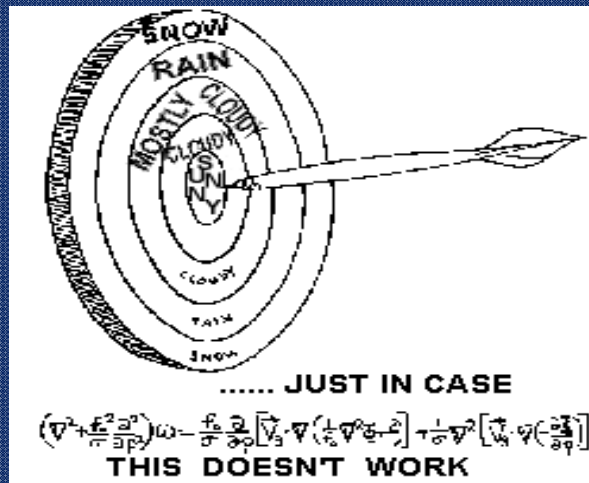


Why is storm track important?

Heaviest snow normally falls 150 to 200 miles to the left of the surface low track



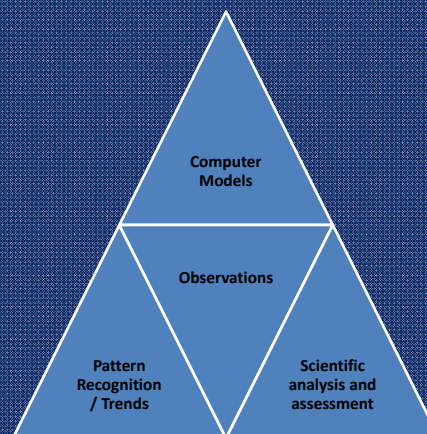
With all of these challenges...How do meteorologists put the forecast together?



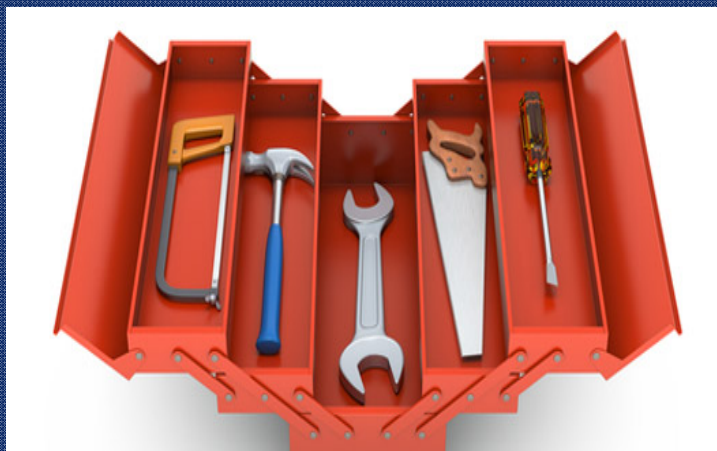
With all of these challenges...How do meteorologists put the forecast together?

Creating a Forecast: Like putting a puzzle together

- Current observations
- Various computer models
- Pattern recognition
- Forecaster expert analysis and assessment



A few helpful planning tools



Activity Planner www.weather.gov/gaylord

National Weather Service Weather Forecast Office
Gaylord, MI

Home Site Map News Organization Search for: NWS All NOAA

Top News of the Day

- MAINTENANCE ON NOAA WEATHER RADIO STATION K01-33...
- Cool end of July Weekend
- Experimental User Defined Area Forecast - Give it a try!
- **Everyone Invited** NWS Gaylord Open House - August 24th

Watches & Warnings Observations Forecast Graphics Rivers & Lakes Climate Marine

Click on the map below for the latest forecast

A map of the Gaylord, MI area. The map shows the coastline of Lake Michigan and Lake Huron. Several locations are marked with dots and labels: Marquette, Newberry, Petoskey, Rogers City, Alpena, Gaylord, Traverse City, Houghton Lake, and Tawas City. The map is color-coded to show different weather zones.

Last map update: Thu, Jul 25, 2013 at 2:14:05 pm EDT

Latest Conditions in Traverse City, MI

Jul 25 1:53 pm 77°F (25°C) Partly Cloudy

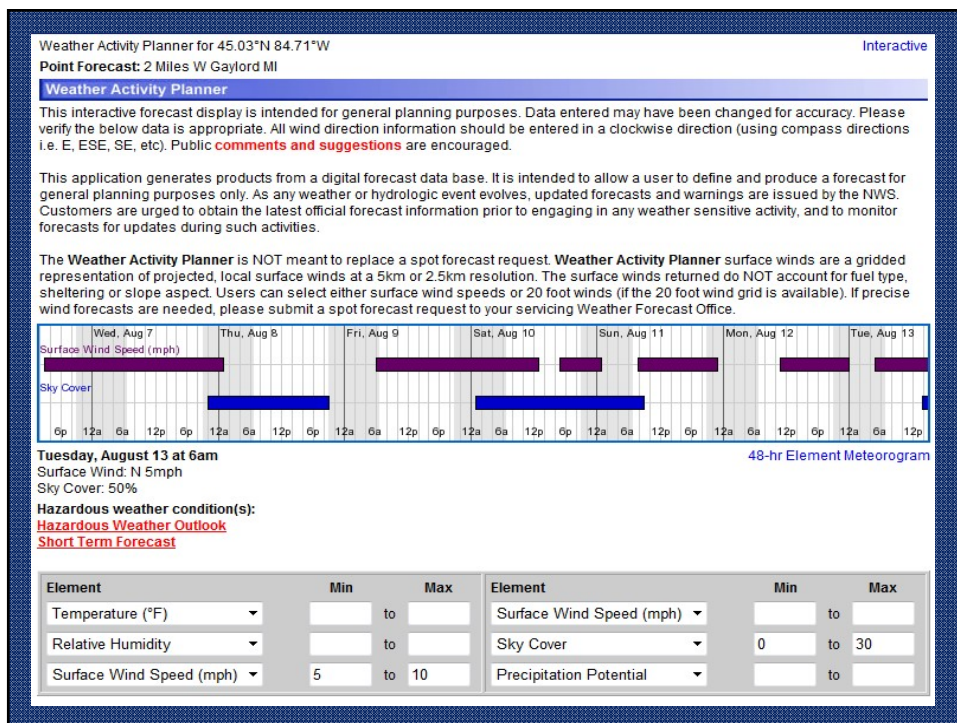
Choose Your Front Page City

Select A City:

Weather Story Radar Satellite Weather Map

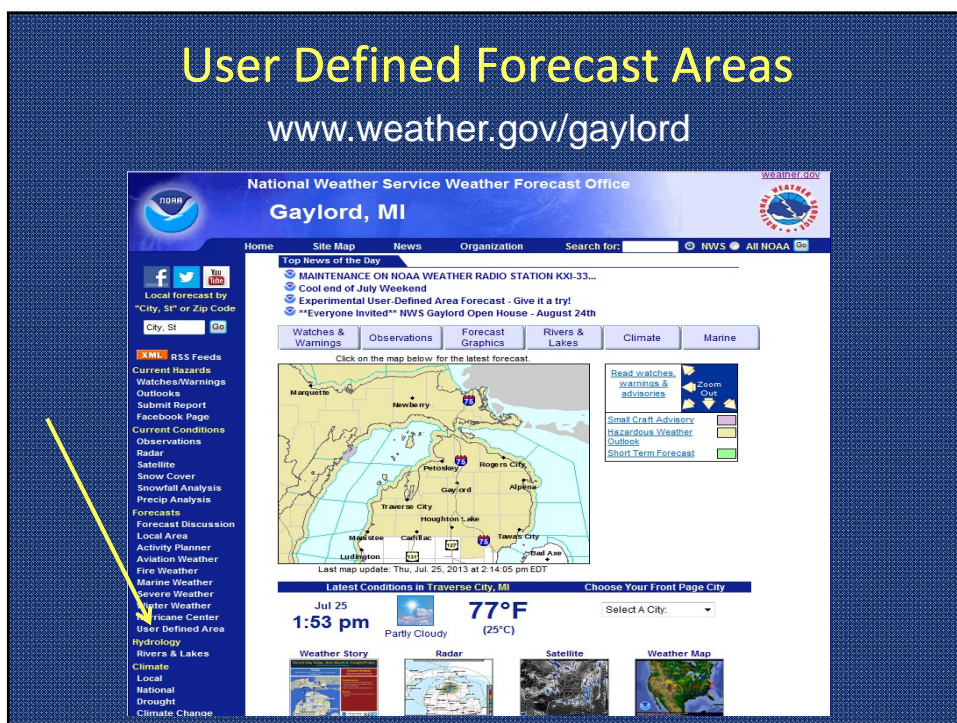
XML RSS Feeds

- Current Hazards
- Watches/Warnings
- Outlooks
- Submit Report
- Facebook Page
- Current Conditions
- Observations
- Radar
- Satellite
- Snowfall Analysis
- Precip Analysis
- Forecast Discussion
- Local Area
- Activity Planner
- Aviation Weather
- Fire Weather
- Marine Weather
- Severe Weather
- Winter Weather
- Hurricane Center
- User Defined Area
- Hydrology
- Rivers & Lakes
- Climate
- Local
- National
- Drought
- Climate Chance

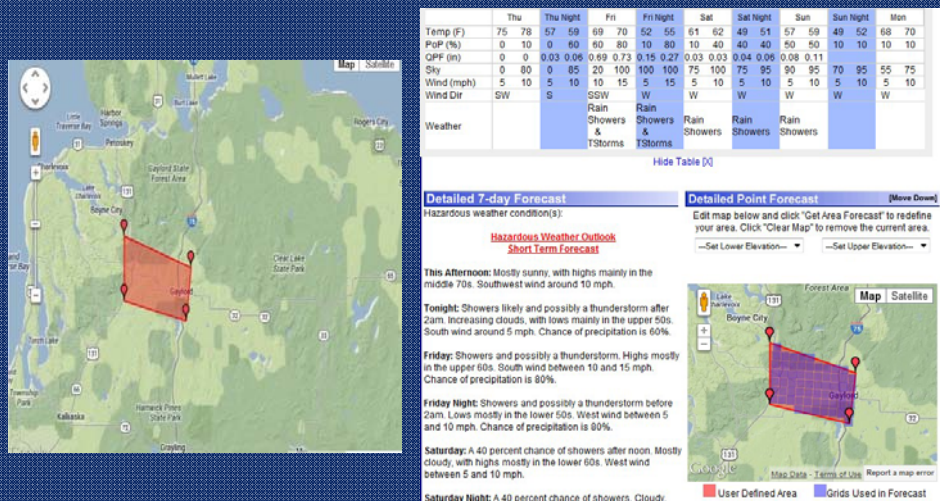


User Defined Forecast Areas

www.weather.gov/gaylord

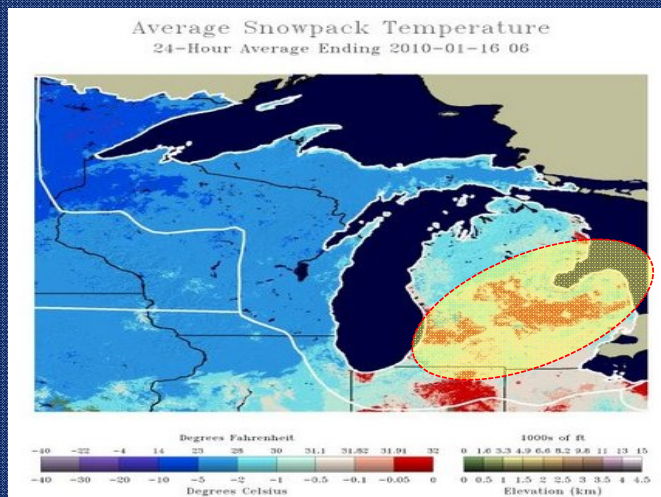


User Defined Forecast Areas



Snowpack Temperatures

See how quickly the snow may melt



<http://www.nohrsc.noaa.gov/nsa/>

Weather alerts on your phones

<http://inws.wrh.noaa.gov/>

Home My Alerts News FAQ About Login Register

iNWS - Interactive NWS
National Weather Service Mobile Decision Support Services (MDSS)

iNWS MOBILE ALERTING
Receive customized text message and e-mail alerts for National Weather Service products that you care about.

Welcome.
InteractiveNWS (iNWS) is the home of new mobile and desktop innovations of the National Weather Service. This application suite allows NWS partners to receive National Weather Service products in new and innovative ways, such as text messaging and mobile-enabled webpages. iNWS strives to fulfill our mission of protecting life and property by using new technology to reach out to our customers.

Recent News.
[iNWS fix implemented at 1910z today to mitigate warnings being sent to neighboring counties](#)
[New iNWS Terms of Use Are In Effect](#)
[Text Message Alerts Unlocked for All iNWS Users](#)
[New Version of the iNWS Web Page Released](#)
[All Advisories, Watches and Warnings Restored to iNWS Text Message Alerts](#)

Note: If you are receiving alerts, but never signed up for them, they may be coming from a new FEMA public system called the Wireless Emergency Alerts (WEA). More information can be found at <http://fema.gov/ema>.

iNWS is an experimental service intended for NWS core partners, including emergency managers, community leaders and other government agencies only. You are encouraged to complete a [short survey](#) on iNWS. See the [iNWS Services Description Document](#) for more information.

Weather alerts on your phones

<http://inws.wrh.noaa.gov/>

When creating an iNWS Alerts alert area, what types of NWS products fall into each weather category?

Severe - Severe Weather, Tornado (SVR, SVS, TOR, WCN)
 Winter Weather - Blizzard, Snow, Winter Storm, Winter Weather, Ice Storm, Avalanche (WSW, AVA, AVW, SAB)
 Hydrology - Flash Flood, Flood, Areal Flood (FFA, FFS, FFW, FLS, FLW)
 Fire Weather - Red Flag, Rangeland Fire Danger (RFW, RFD)
 Marine Weather - Lake Wind, Marine, Small Craft, Hazardous Seas (CWF, MWS, NSH, GLF, SMW, OFF, MWW)
 Coastal Hazards - Tsunami, Coastal Flooding, High Surf (CFW, LSH, TSU)
 Tropical Weather - Hurricane, Tropical Storm, Hurricane Winds (HLS, TCM, TCP, TCV)
 Aviation - Aviation Weather Warnings (AWW)
 Non-Precipitation - High Wind, Fog, Frost, Freeze, Dust (NPW, ASA)
 Civil Emergency - 911 Outage, Evacuation, HazMat, Nuclear, Volcano (CAE, CDQ, CEM, EQW, EVI, FRW, HMW, LAE, etc.)
 Other - Special Weather Statement (SPS)

Winter Weather Briefing Page

www.weather.gov/gaylord

Aviation Weather
Fire Weather
Marine Weather
Severe Weather
Winter Weather
Hurricane Center
Hydrology
Rivers & Lakes
Climate
Local
National
Drought
More...
Weather Safety
Preparedness
Weather Radio
StormReady
SkyWarn
Additional Info
Items of Interest
Education Resources
Coop Observer
Top News Archives
Our Office
Report/Receive Wx
Contact Us
Contact Info
Feedback

Traverse City
Houghton Lake
Tawas City
Cadillac
Marquette
Lansing
Bad Axe

Last map update: Wed, Jan. 5, 2011 at 9:13:05 am EST

Latest Conditions in Traverse City, MI

Choose Your Front Page City

Jan 5
8:53 am
19°
(-7°C)
Light Snow

Weather Story
Radar
Winter Weather Briefing Page
Expert Weather Briefing
Precip/Snow Maps
Mobile Weather
Weather on the GO!

CoCoRaHS
Report rainfall and snowfall for your area! Join CoCoRaHS today!

Need 24 hour decision support?

If you ever need more information about a particular weather event or have specific questions for a forecaster....[Please call us](#). We have a forecaster on duty 24 hours a day, 7 days a week

NWS Gaylord: **989-732-9306** (24 hour direct forecaster number)



You can help us as well

The best warning information from the NWS occurs when we get real time snowfall/icing reports

The kinds of information we need:

Snowfall accumulations (especially overnight hours)

Intense snow bands (1"+ per hour snowfall rates)

Icing on roads or power lines

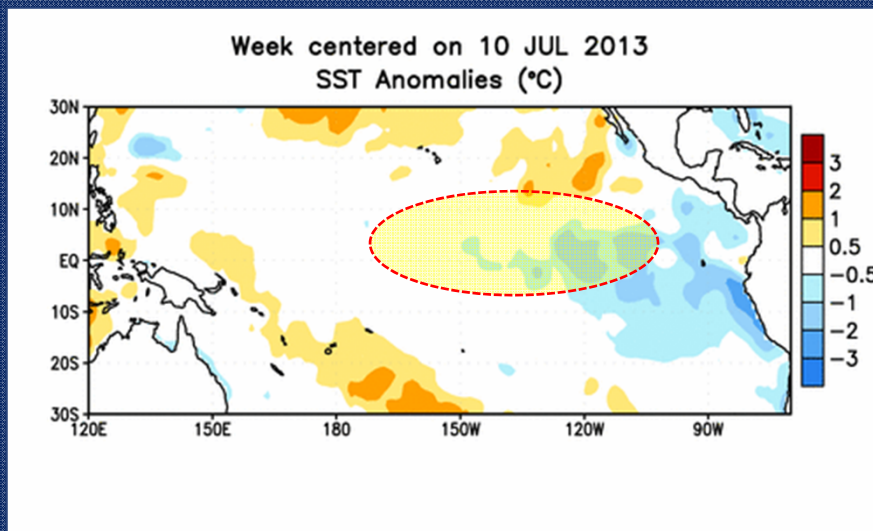
Anytime you can provide the NWS with current condition information, it is appreciated and helpful to the warning process

NWS Gaylord **989-732-9306** (24 hour direct forecaster number)

What about this upcoming winter?



First we look to the Pacific Ocean



Pacific Niño 3.4 SST Outlook

- Most models predict ENSO-neutral (-0.5°C to +0.5°C) continuing through Northern Hemisphere spring 2014.

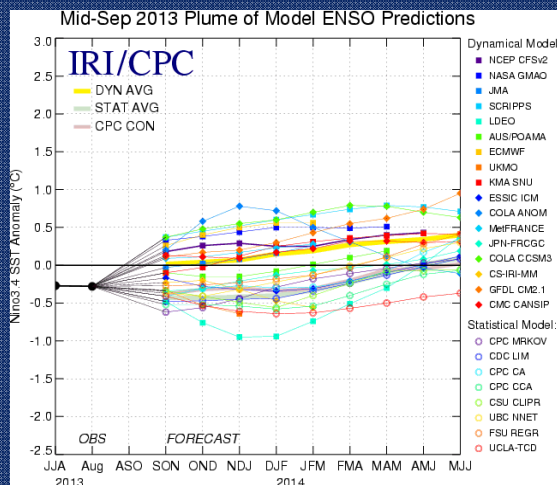
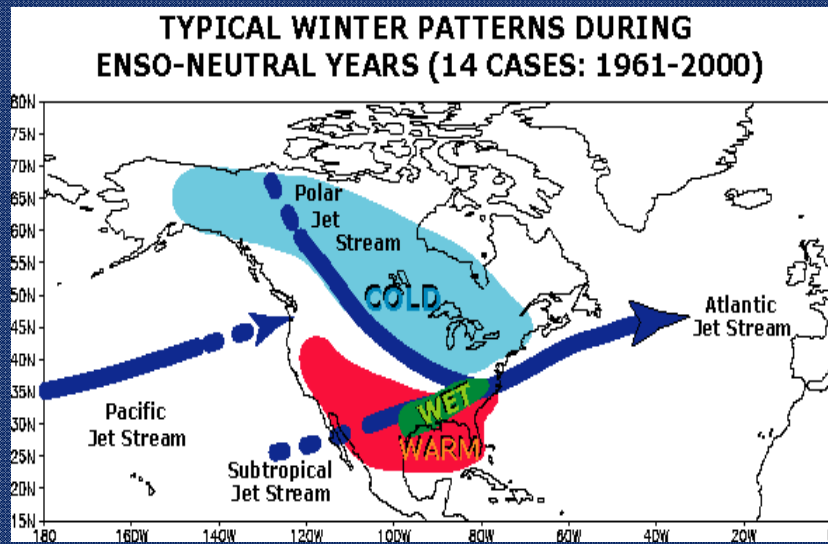
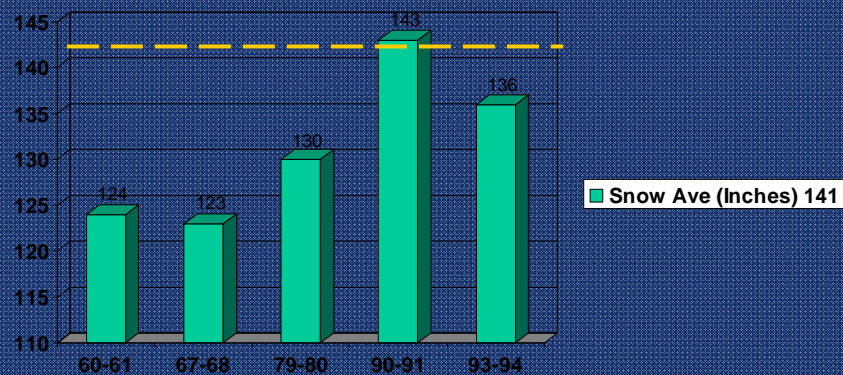


Figure provided by the International Research Institute (IRI) for Climate and Society (updated 18 September 2013).

Typical Neutral Winter Patterns



Gaylord Snowfall during ENSO Neutral Conditions



Questions???

Jim Keysor
Warning Coordination Meteorologist
NWS Gaylord

989-731-3384 Ext 726

james.keysor@noaa.gov
www.weather.gov/gaylord