

**PANEL DISCUSSION
LAW ENFORCEMENT, WEIGH-MASTER,
CDL & OVERLOADING**

**2014 Michigan
Winter Maintenance Conference**

Tanks & Tanker Endorsement



Tanks & Tanker Endorsement

- What about your equipment?
- What about your operators/drivers?

Tanks & Tanker Endorsement

- From the Mi Commercial Driver License Manual
 - “A tank endorsement is required for certain vehicles that transport liquids or gases.”
 - “The liquid or gas does not have to be hazardous.”
 - “A tank endorsement is only required if your vehicles needs a Class A or B CDL...”
 - Permanently mounted cargo tank rated at greater than 119 gal
 - Or a portable tank rated greater than 1000 gal

Tanks & Tanker Endorsement



2,700 gallons

Tanks & Tanker Endorsement



1,500 gallons

Tanks & Tanker Endorsement



1,000 gallons

Tanks & Tanker Endorsement



**Not CDL A or B
vehicles**

**1,200 gallons
Not permanent**



Overloading

The Marvin Hump - a diminishing load

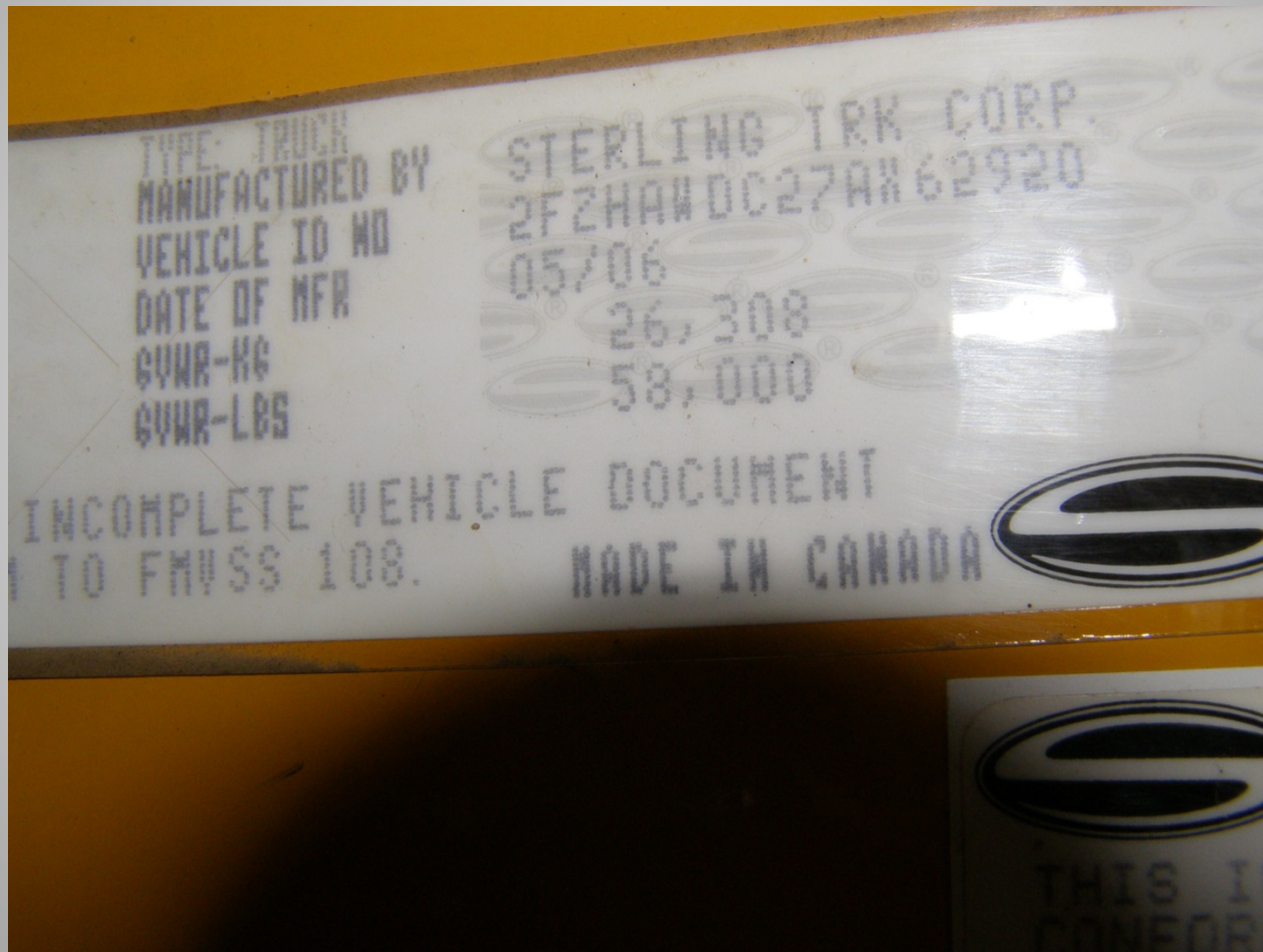


BAD---NO
GOOD---
NOOOOO!!!!

Overloading

- SAFETY
- The driver's responsibilities
- The Agency's responsibilities
- Mechanic's worries
- Equipment fatigue and early failure
- SAFETY

Overloading



Let's Do a Test



Overloading



Overloading

Liquids too



Overloading



Overloading



Overloading



Overloading

- Findings were better than we expected
- All were at or below max. recommended weight
- Our tank trailer was overall ok but rear axle over on its own due to hitching not level
- 750 gal tank on stake truck over when full, cut back to 700 gal.

LED Lights - Snow



LED Lights - Snow



CITY OF FARMINGTON HILLS DIVISION OF PUBLIC WORKS

27245 HALSTED ROAD
FARMINGTON HILLS, MI 48331
www.fhgov.com



Kevin McCarthy
kmccarthy@fhgov.com
(248) 871-2850

