

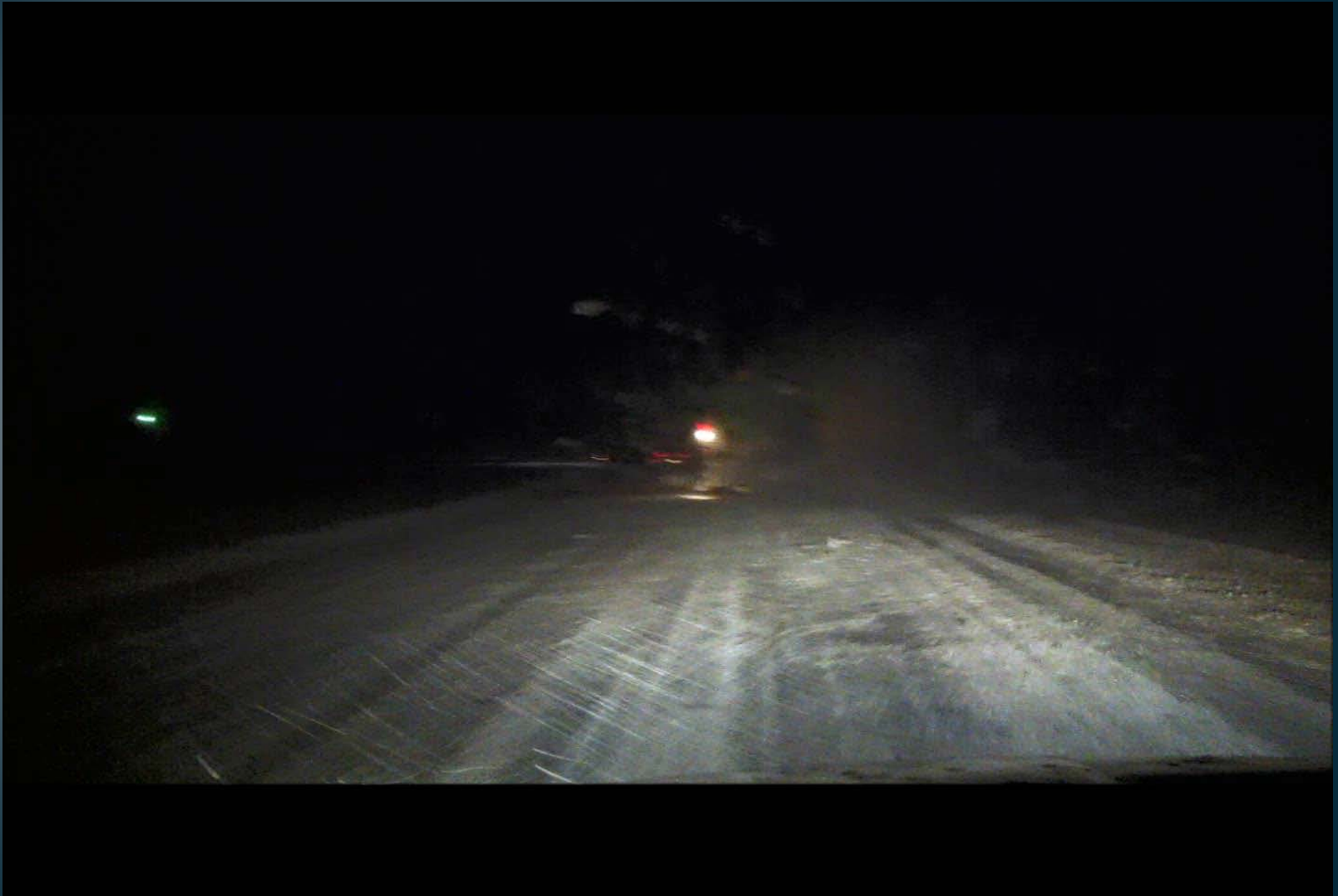
# Innovation: Green Warning Lights

Winter Operations Conference – 2015

Barry County Road Commission

Jake Welch – Director of Operations

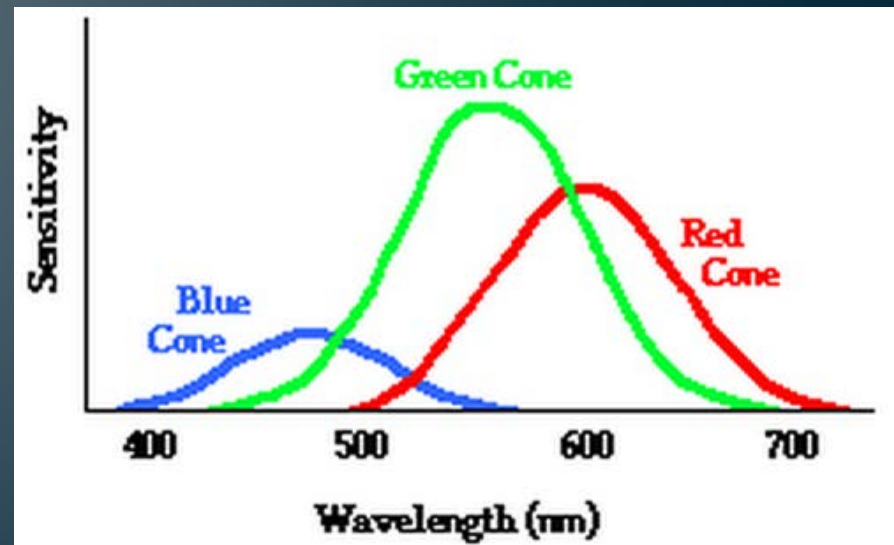
# Visibility is the Key!!!



# Science!?!?!?

- Your eye's retina is lined with a variety of light sensing cells known as rods and cones.
  - Rods: sensitive to the intensity of light
  - Cones: color-sensing cells of the retina
    - Cones are either sensing red, green, or blue
    - Other colors are seen via a combination of 2 or more cones

The green cone is the highest sensitivity as well as the largest range of wavelength.



# Ohio DOT

- ODOT uses an amber, green and white color combination – all with different pulses.
- House Bill 487 (Mid-biennium Budget Review) ORC 4513.18. The law went into effect on 9-10-2012.
- 50% in 2012
- 80% in 2013
- 100% in 2014....

# Motor Vehicle Code

- PA 300 of 1949 as amended
- Allows for amber and yellow warning lights
- Allows for red & blue for emergency and police
- Should allow for green to be utilized for state, county, & municipal road working vehicles.



# Legislation Changes

- What's happening now?
  1. Many counties are already utilizing these lights.
  2. Local law enforcement permission
- Changes would need to be made to PA 300 to:
  1. Allow for use of green warning lights in lieu of yellow or amber
  2. Restrict use to exclusively state, county, & municipal vehicles.
- How can this effort be helped?
  1. Contacting your local state representatives
  2. Support a CRA legislative priority

# Proposed CRA Legislative Priority

- Visibility of public equipment within the road right-of-way is essential to the safety and well-being of public employees and the motoring public. Contained in PA 300 of 1949, entitled “Michigan Vehicle Code,” section 682.c(5)(d) are restrictions regarding colors of lights allowed to be utilized by county or municipal vehicles engaged in snow or ice removal activities. Currently green lights are not legal means of warning other vehicles of a plow truck’s location. A road agency’s ability to utilize the newest in technology regarding lighting and colors of lighting should not be hindered by this law and should provide for the road agency to utilize green warning lights under all circumstances while working within the right-of-way.
- CRA supports legislation allowing an amendment to PA 300 of 1949, “Motor Vehicle Code,” for state, county, or municipal vehicles to exclusively utilize green warning lights in place of currently required amber or yellow lights.

# Legislative Work Currently Being Done

- Representative Rob VerHeulen
- District 74 – Walker, MI
- Michigan House of Representatives
- Drafted changes to PA 300 allowing for snow and ice removal vehicle to utilize green warning lights.



**This Could Save Lives!!!**

