

Michigan Transportation Asset Management Council (TAMC) Update

2016 MI Bridge Conference
COUNCIL UPDATE



Michigan
Transportation Asset
Management Council

Council Member
Brad Wieferich

TAMC Update

All public roads in Michigan will be managed using the principles of Asset Management

Public Act 499 (2002)



www.michigan.gov/tamc



Michigan
Transportation Asset
Management Council

- Created in 2002 by Act 499 and amended by PA 199 of 2007

Requires all agencies to submit:

- Annual Investment Report
- Current Pavement and Bridge Conditions
- Three Year Investment Program

www.michigan.gov/tamc



Brad Weiferich
MDOT



Bill McEntee
CRA



John Egelhaaf
MAR



Dave Wresinski
MDOT



Donald Disselkoen
MAC



Rob Surber
CSS



Jon Start
MTPA



Joanna Johnson
CRA



Bob Slattery
MML



Dale Kerbyson
MML



Jennifer Tubbs
MTA



Michigan
Transportation Asset
Management Council



Michigan
Transportation Asset
Management Council

- Roger Belknap, TAMC
Coordinator
 - Michigan Department of
Transportation
 - TAMC Support Division
 - 3rd Floor, Van Wagoner
Bldg., B340
 - Lansing, MI 48909
 - 517-373-2249
 - belknapr@michigan.gov





Michigan
Transportation Asset
Management Council



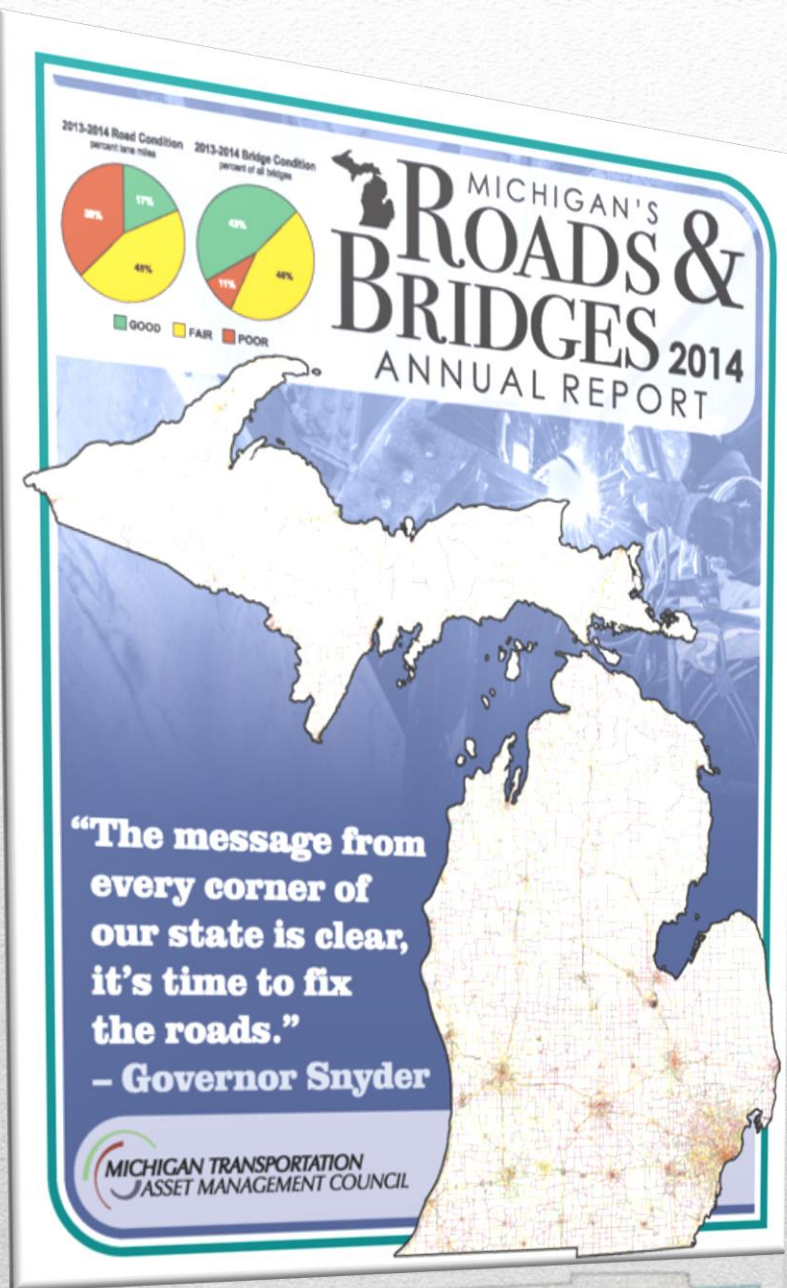
- Current Work Program
 - Education/Training
 - PASER
 - Elected Officials
 - Investment Reporting
 - Bridges
 - Paved Non-Federal Aid
 - Unpaved Roads Pilot Study
 - Website Updates
- Work Program Updates
- Future Considerations
 - Paved Non-federal Aid Data
 - Unpaved Rating
- Federal Highway - Model Inventory of Roadway Elements (MIRE)
- Further Data Analysis



Michigan
Transportation Asset
Management Council

- **SAVE THE DATE:**
 - Spring TAMC Conference
April 13th, Double Tree
Hotel, Dearborn MI
- Nominations for
Individual &
Organization Awards
- 2016 Schedules
 - PASER Training
 - IRT/ADARS Training
 - Local Elected Officials
- Reimbursement Requests
for Paved Non-federal aid
due March 1
- Please submit your Paved
Non-federal aid data
with/without
reimbursement

TAMC Annual Report



- Due annually May 2nd
- PASER data & analysis
- Bridge data & analysis
- Trends & Forecasts

And also:

- Website data downloads
- Dashboard updates



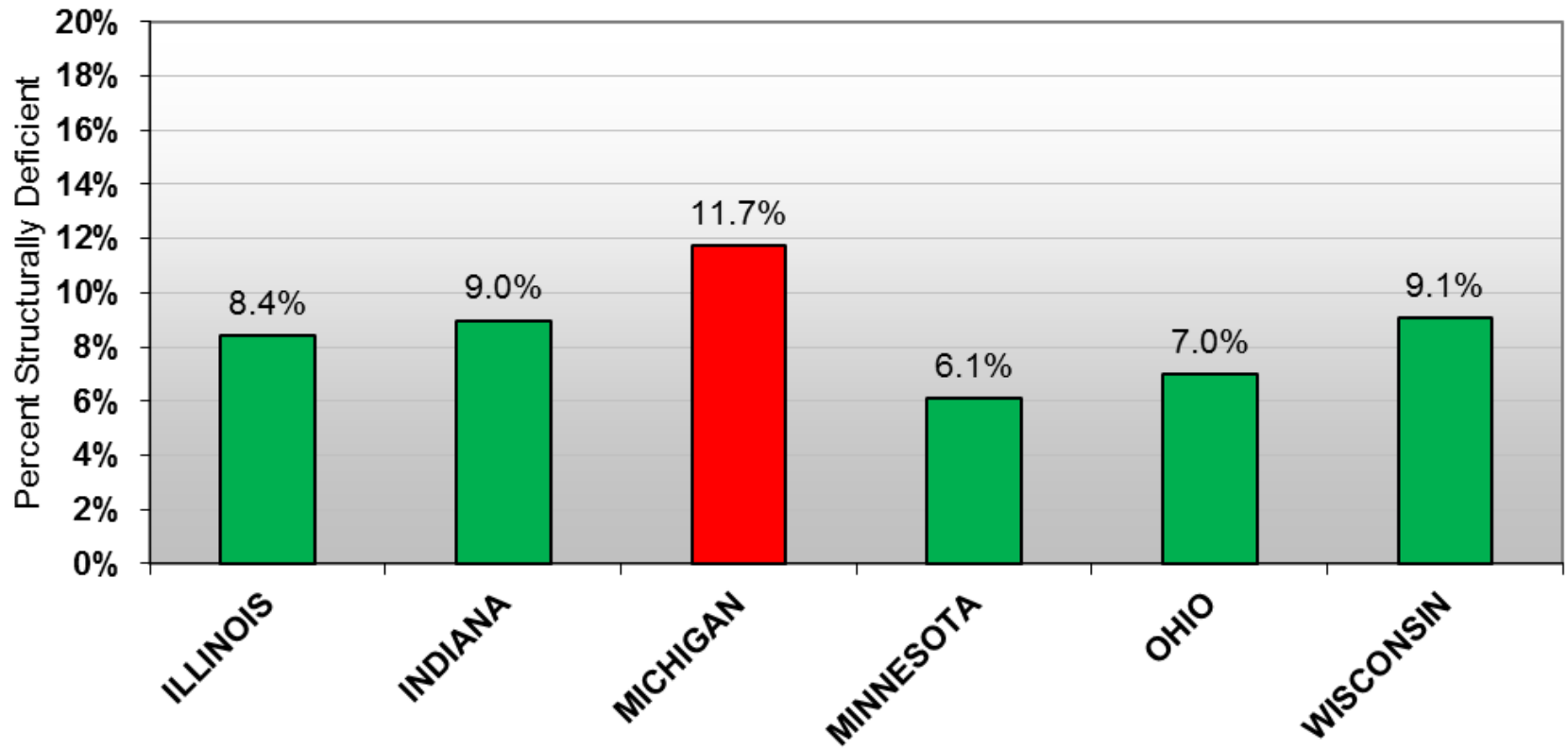
Michigan
Transportation Asset
Management Council

www.michigan.gov/tamc



Michigan
Transportation Asset
Management Council

2015 Percent Structurally Deficient Bridges All Highway Bridges (Great Lake States)





Michigan
Transportation Asset
Management Council

TAMC Website



Michigan
Transportation Asset
Management Council

[Home](#) [Training](#) [Support](#) [About Us](#)

[Interactive Maps](#) [Dashboards](#) [Reporting Hub](#)

BRIDGE TRAINING & RESOURCES

[OVERVIEW](#)

[MATERIALS](#)

[TRAINING DATES](#)



Maintaining bridges in good condition has proven to extend service life and to be more cost effective than allowing deterioration to progress, resulting in the need for more extensive and costly rehabilitation or replacement projects. By developing and implementing a comprehensive bridge preservation plan, a local agency can better identify its needs, prioritize its actions, and allocate available funds appropriately. Developing a successful bridge asset management plans requires quality inspection data, an understanding of bridge costs and actions as well as an understanding of asset management principles.

[Learn more about Bridge Training & Resources](#)



Michigan
Transportation Asset
Management Council

TAMC Website



Bridge Inspection

Quality bridge inspection data is a key component of an asset management plan as well as a requirement of the National Bridge Inspection Standards. The safety inspection program in Michigan is managed within the Bridge Field Services Section of the Operations Field Services Division of MDOT. The program ensures compliance with the National Bridge Inspection Standards (NBIS) through comprehensive performance of inspection timeliness verifications, annual FHWA NBIS Metric evaluations, inspection team leader qualification appraisals, and quality assurance reviews. Bridge Field Services also develops inspection procedures, responds directly to the FHWA Michigan Division Bridge Engineer, and serves as the recognized resource for all inspection related inquiries.

[Read more](#) 

Bridge Management and Scoping

Developing an asset management plan requires identifying appropriate work types for a specific bridge and identifying costs. The bridge management and scoping program is operated by the Bridge Management Unit of MDOT. The program maintains a scoping manual, deck preservation matrices, and cost estimating worksheets. The site also contains studies on the expected service life of structures and information on preservation activities.

[Read More](#) 

Michigan Bridge Conference and Pre-Conference Workshop

This workshop will provide bridge engineers, bridge designers, and bridge owners a deeper understanding of bridge inspection reporting requirements, including routine reporting requirements, timeliness of inspections and reporting, new reporting requirements, and Scour Action Plan-development, use, and documentation. The morning sessions will provide overviews of quality control/quality assurance, inspection reporting requirements, and risk based inspections. The second half of the workshop will include non-destructive evaluation, Michigan-bridge updates, and safety issues. The conference will provide information on a variety of bridge topics including FHWA, MDOT, TAMC and Local Agency Program updates, Bridge Case Studies, current research, SHPO and historic bridges, and working with threatened and endangered species.

[Read more](#) 

Michigan's Performance Measure Dashboards

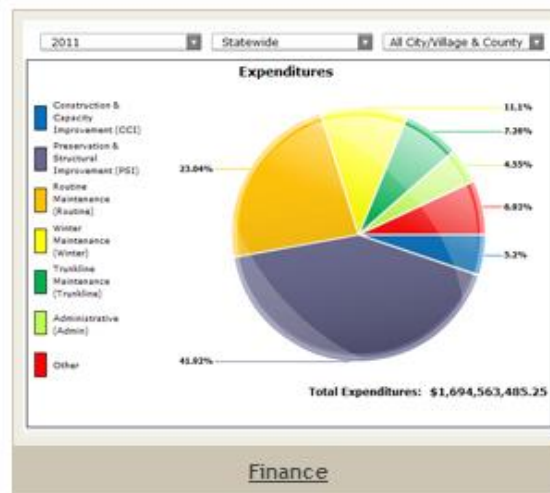
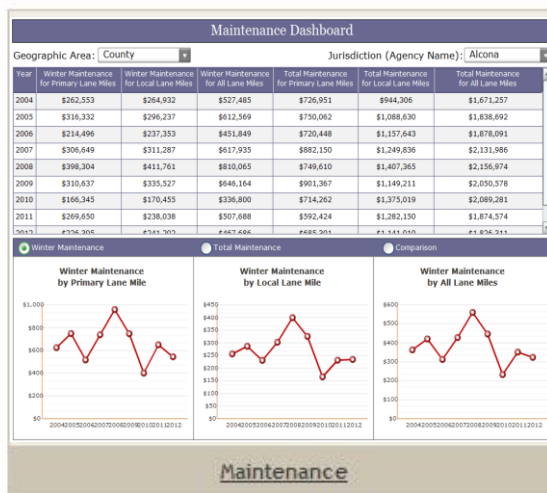
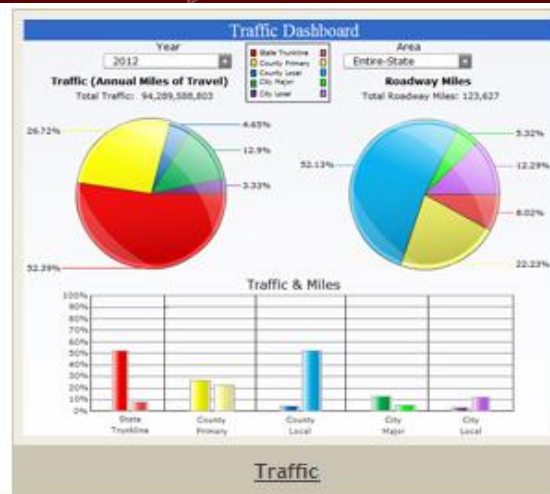
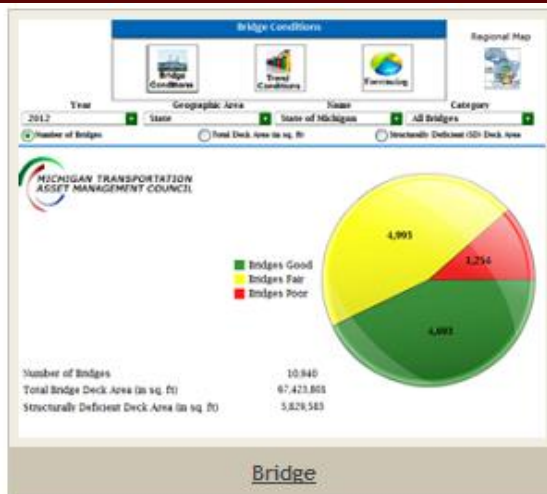
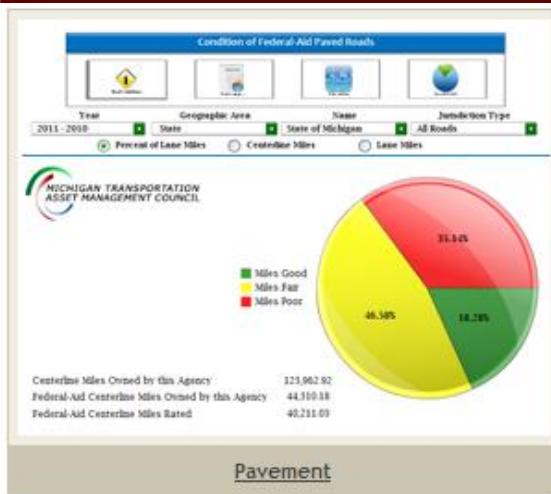


Transportation Asset Management Council MI Transportation Reporting Portal

Michigan.gov

The Official State of Michigan Website

Subscribe to TAMC Updates Login



www.michigan.gov/tamc



Transportation Asset Management Council

MI Transportation Reporting Portal

Michigan.gov

The Official State of Michigan Website

Subscribe to TAMC Updates

Search: Enter a document or meeting name.

Print Navigation Info

Council Investment Reporting Data Access Education and Training Communication

search address, city, zip, and more

Map Results



Legend

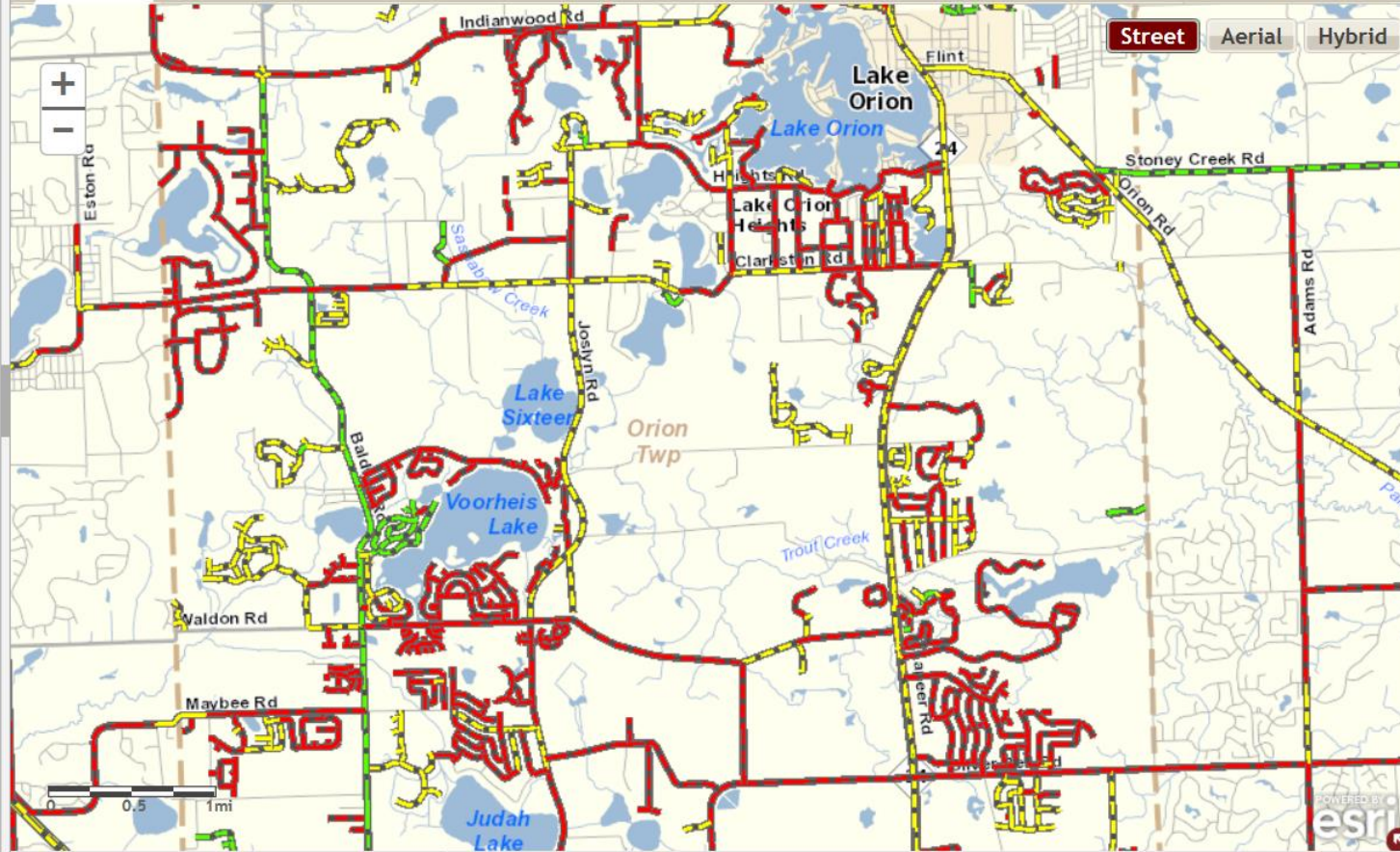
PASER - Road Condition

Most Current:

Poor

Fair

Good





Michigan
Transportation Asset
Management Council

How does the council collect bridge condition data?



From bridge inspections entered into MiBridge.



Michigan
Transportation Asset
Management Council

How does the council collect Bridge Investment Data?

A screenshot of the Investment Reporting Tool (IRT) web application. The interface includes a navigation menu at the top with options like 'Council', 'Investment Reporting', 'Data Access', 'Education and Training', 'Communication', and 'Admin'. Below the menu is a search bar and a toolbar with 'Zoom Extents', 'Navigation Info', 'Select Bridge', 'Identify Tools', and 'Clear'. The main area is a map showing a street grid with 'Kalamazoo St' highlighted in red. To the right of the map is a data entry form for a bridge project. The form has tabs for 'Road Data' and 'Bridge Data', with 'Bridge Data' selected. The form contains several fields: 'Bridge Name' (a dropdown menu with 'Kalamazoo St at GRAND RIVER' selected), 'Delete' and 'Stru' buttons, a table with one row containing '3937' and 'KALAMAZOO STREET', 'Date Open to Traffic' (a date input field), 'Project Classification' (a dropdown menu), 'Improvement Type' (a dropdown menu), 'Multi-Year Plan' (radio buttons for 'Yes' and 'No'), 'Life Expectancy in Years' (an input field), 'MDOT Job ID' (an input field), 'Local Project ID' (an input field), and a 'Comments' text area. At the bottom of the form are 'Save Treatment' and 'Clear' buttons.

Investment Reporting Tool (IRT)



Overview of Investment Reporting Process

PROJECTS

- “The what, the where and the when”
- Current year Road & Bridge work
- 3yr Plan Planned Project also

NEW - PROJECT ID / PROJECT NAME

- Unique for each project
- Common ground - links all systems.
- Can be street names or ID numbers

Step 1

Step 2

Step 3

IRT (CSS)

- Enter PROJECTS

IRT (CSS)

- TAMC Statewide Database

ADARS/ACT51 (MDOT)

- Verify PROJECTS from IRT
- Enter PROJECT COSTS

ROADSOFT (MTU /LTAP)

- Enter PROJECTS
- PASER Ratings

NEW - PROJECT COSTS

- **NEW REQUIREMENT** on Asset Management Page
- Requires Total Costs for Each Project (Not annual cost)



Michigan
Transportation Asset
Management Council

Bringing the Pieces Together

- **IRT + ADARS = Compliance**
- These two systems are now integrated to allow projects entered into the IRT to sync with the fields in the ADARS system.
- ADARS users will then enter in project cost information
- This increases accuracy and efficiency
- IRT and ADARS reporting share a common deadline now. (120 Days after Fiscal Year End Date)





Michigan
Transportation Asset
Management Council

IRT Report Syncs to the Asset Management Page in ADARS

Transportation Asset Management Council
MI Transportation Reporting Portal

Investment Reporting | Data Access | Education and Training | Communication | Admin

ADARS - Asset Management Project Data

Improvement Type	Project ID	Date Open To Traffic	Pavement Type
Skip Patching	0-5	08/05/2013	Asphalt
Bituminous Reconstruction	SW00016-2	08/23/2013	Asphalt
Bituminous Reconstruction	SW0017	09/01/2013	Asphalt
Crush & Shape & Resurf	LS0036-2	09/03/2013	Asphalt
Crush & Shape & Resurf	LS0036-3	09/03/2013	Asphalt
Crush & Shape & Resurf	LS0036-1	09/04/2013	Asphalt
Crush & Shape & Resurf	LS0036-4	09/10/2013	Asphalt
Overband Crack Fill	IRT-24120_2013_39044	10/11/2013	Asphalt

IRT - ADARS Report

MDOT Department of Transportation

Assets | Liabilities | Revenues | Expenditures | Other Financing | Non-Motorized | Capital Assets | Long Term Debt | **Asset Management**

ASSET MANAGEMENT

The Total Project Cost is required for work completed to open the road to traffic during the fiscal year (i.e. no other work needs to be done for this project number).
Improvement Type: This will be the most significant for the project (i.e. multiple improvement type could be done for the project).
This page must be completed for fiscal years ending after September 30, 2014.
For more information about the Asset Management page please [click here](#).

Improvement Type	Project ID	Total Project Cost	Date Open To Traffic	Pavement Type
Overband Crack Fill	IRT-24120_2013_36	\$0.00	10/11/2013	Asphalt
Bituminous Overlay (< 40mm)	IRT-24120_2013_36	\$0.00	10/11/2013	Asphalt
Skip Patching	IRT-24120_2013_36	\$0.00	10/11/2013	Asphalt
Crush & Shape & Resurf	LS0036-4	\$0.00	09/10/2013	Asphalt
Crush & Shape & Resurf	LS0036-1	\$0.00	09/04/2013	Asphalt
Crush & Shape & Resurf	LS0036-2	\$0.00	09/03/2013	Asphalt
Crush & Shape & Resurf	LS0036-3	\$0.00	09/03/2013	Asphalt
Bituminous Reconstruction	SW0017	\$0.00	09/01/2013	Asphalt
Bituminous Reconstruction	SW00016-2	\$0.00	08/23/2013	Asphalt
Skip Patching	0-5	\$0.00	08/05/2013	Asphalt

Update Grid | Generate Report

ADARS - Asset Management Page

Reminder: This sync removes previous dual entry process as ADARS now only needs new Project Costs



Michigan Transportation Asset Management Council

**** 4 WEBINAR SESSIONS ****

NOTE: Each session is 9:00am to 12:00pm with login open at 8:45am. No pre-registration is required.

- **Friday, February 26**
- **Thursday, March 31**
- **Friday, June 3**
- **Thursday, September 8**

To participate in a webinar training session you will need both a video connection using your computer and an audio connection using your phone.

Depending on your web browser you may need to install temporary software onto your computer in order to participate in the webinar.

1. For Video go to AT&T web meeting login:
 - www.webmeeting.att.com
 - Meeting Number: 8774119748
 - Code: 8022603
 - Fill in your email address
 - Fill in agency name - participant
 - Example: "Houghton - Dave Jennett"
 - Then Click "Submit"
2. For Audio - Phone Dial:
 - 1.877.411.9748
 - Code: 8022603

Note: If you have any questions regarding a webinar session please contact the TAMC helpdesk at: 517.373.7910

**** 5 STATEWIDE ON-SITE SESSIONS ****

NOTE: All Sessions are 9:00am to 12:00pm
Please pre-register with the contact person below if you plan to attend that session.

Wednesday, March 9 – MDOT Grand Rapids Region Office

1420 Front Avenue, NW, Grand Rapids, MI 49504
Dave Bee (WMRPC) / 616-774-8400
info@wmrpc.org

Tuesday, April 5 – SEMCOG (Detroit)

1001 Woodward Avenue, Suite 1400
Detroit, MI 48226
Ed Hug (SEMCOG) / 313.324-3335
hug@semcog.org

Thursday, May 5 – Gaylord University Center

80 Livingston Blvd, Gaylord, MI 49735
Nico Tucker (NEMCOG) / 989.705.3732
ntucker@nemcog.org

Tuesday, July 12 – Escanaba, Delta CRC

3000 32nd Ave N, Escanaba, MI 49829
Peter Van Steen (CUPPAD) / 906.786.9234
pvansteen@cuppad.org

Thursday, August 11 – Kalamazoo CRC

3801 E. Kilgore Road / Kalamazoo, MI 49001
Selena Rider (Rckc Admin Assistant) / 269.381.3171
info@kalamazooountyroads.com

IRT webinar and on-site training sessions available. Visit the TAMC website for the full updated schedule



Michigan
Transportation Asset
Management Council

Asset Management Guide for Local Agency Bridges Training Course

8:00 AM - 2:30 PM
Sign-in starts at 7:30 AM

2016 Training Dates

September 14 & 15	Lower Peninsula
November 1st	Locations TBD

Training Topics

- Bridge asset management principles
- Tools & resources available to your agency
- State & federal policy
- Programmatic requirements relating to bridge asset management

Registration

Public agency registration fee: \$20

Private company registration fee: \$50

Register at ctt.mtu.edu/Training.

Registrations must be made in advance. Sign-in and the continental breakfast begins at 7:30 AM.

Questions? Email ctt@mtu.edu

Instructors

Chris Gilbertson, Ph.D., P.E., is a Senior Research Engineer at the Center for Technology & Training at Michigan Technological University. His efforts are focused on the Bridge Load Rating Program which offers technical assistance to local agencies and their consultants while conducting load ratings using AASHTOWare Bridge Rating.

Al Kaltenthaler, P.E., S.E., is the Vice President and Senior Associate for TranSystems Corporation in East Lansing. Al is a former member of TAMC Bridge Committee. He has 32 years of engineering experience. Al received a B.S. in Civil Engineering from University of Akron. He has been the project manager for dozens of MDOT bridge design, rehabilitation, inspection, and load rating projects.



No-shows and cancellations within three business days of the session will be charged the full registration fee. Substitutions will be accepted. The Center for Technology & Training's (CTT) continuing education policy is available [here](#).

Feedback? Questions?

Thank You for all you do in data collection!

Brad Wieferich, TAMC Member



Michigan
Transportation Asset
Management Council



www.michigan.gov/tamc