



Michigan County Engineers' Workshop
County Experiences Inside Illinois

Paula J. Trigg, P.E., County Engineer/ Director of Transportation
Lake County Division of Transportation

February 4, 2015



Today's Topics

- Overview: County government in Illinois
- Doing business with counties
- Challenges: Growth and Funding
- Leadership Perspectives
- Program Highlights



***OVERVIEW: COUNTY
GOVERNMENT IN ILLINOIS***

- Governing Bodies
- Government Committee Structure
- County Highway Organization
- Transportation Responsibilities

The County Board: Governing Body

- Establish budgets for funds, levy taxes
- Adopt ordinances and rules

County	Election of the Chairman	# of Districts	Members per District	#Board Members including Chair
Cook	at large	17	1	18
DuPage	at large	6	3	19
Kane	at large	24	1	25
Lake	by Board	21	1	21
McHenry	by Board	6	4	24
Will	by Board	13	2	26

County Board Committees and Subcommittees

Cook	DuPage	Kane	Lake	McHenry	Will
<ul style="list-style-type: none"> Audit Committee Capital Improvements Contract Compliance Criminal Justice Environmental Control Finance Labor Litigation Pension Real Estate and Business & Economic Development Tax Delinquency Worker's Compensation Health and Hospitals Homeland Security and Emergency Management Human Relations Law Enforcement Legislation and Intergovernmental Relations ➤ Roads & Bridges Rules & Administration Technology Veterans Workforce, Job Development & Training Opportunities Zoning & Building 	<ul style="list-style-type: none"> County Board Development Economic Development Environmental Finance Health & Human Services Intergovernmental Judicial & Public Safety Legislative Public Transit ➤ Public Works Redistricting Stormwater Strategic Planning Technology ➤ Transportation 	<ul style="list-style-type: none"> Administration Agriculture Committee of the Whole County Board County Development Energy & Environment Executive Finance & Budget Human Services Jobs Judicial & Public Safety Legislative Public Health Public Service ➤ Transportation 	<ul style="list-style-type: none"> Committee of the Whole Financial and Admin. Health & Comm. Serv. Law & Judicial Planning, Building & Zoning ➤ Public Works & Transportation Revenue, Records & Legislation Rules 	<ul style="list-style-type: none"> Building Projects County Board Finance & Audit Human Resources Law & Justice Legislative & Intergovernmental Affairs Liquor & License Management Services Nat. & Environmental Planning & Development Pollution Control Facility Public Health & Human Services ➤ Transportation 	<ul style="list-style-type: none"> Will County Board Caucus Meetings Capital Improvements Committee of the Whole Executive Finance Insurance & Personnel Judicial Land Use & Development Legislative & Policy Leadership Meetings Planning & Zoning Commission Public Health & Safety ➤ Public Works & Transportation Stormwater Mgmt. Planning Technology Ad-Hoc

Illinois Tice Law (1913)

- Created county highway departments in Illinois
- On behalf of state, county highway departments assumed responsibility for:
 - Road building
 - Jurisdiction
 - Maintenance



What is a County Highway?



A county-board designated, state-approved system of secondary arterial highways

Counties' Position in Highway Hierarchy



Township Roadways

Municipal Roadways

County Highways

Federal/State Highways

Transportation Functions within County Organization

County	Cook	DuPage	Kane	Lake	McHenry	Will
Staff	277	111	64	122	64	76
Name	Department of Transportation & Highways	Division of Transportation	Division of Transportation	Division of Transportation	Division of Transportation	Department of Highways
Manager	Superintendent Assistant Superintendent	County Engineer/ Director	County Engineer/ Director Deputy Director	County Engineer/ Director Assistant County Engineer	County Engineer/ Director Assistant County Engineer	County Engineer/ Director Assistant County Engineer
Departments	<ul style="list-style-type: none"> • Construction • Maintenance • Transportation Planning • Design • Fiscal Management 	<ul style="list-style-type: none"> • Engineering • Highway Permitting • Maintenance • Roadway Impact Fees • Traffic • Bikeways & Trail Planning • Public Transit • Transportation Planning • County Fleet Maintenance 	<ul style="list-style-type: none"> • Design • Permitting • Construction • Land Acquisition • Finance & Budgeting • IT & GIS • Planning & Programming • Facility Maintenance • Highway Maintenance 	<ul style="list-style-type: none"> • Design • Construction • Administration & Finance • Planning • Traffic • Maintenance • County Fleet Maintenance 	<ul style="list-style-type: none"> • Design • Construction • Maintenance 	<ul style="list-style-type: none"> • Engineering • Maintenance • Clerical

Duties of Transportation Departments



- Construction and maintenance of county highways.
- Prepares plans and specs for roads and bridges built by the county.
- Maintains traffic control devices and signs.
- Administers motor fuel tax funds for the county and townships.
- Develops and updates the 20 year long-range transportation plan.
- Advises township road district highway commissioners of best construction and maintenance methods for township roads.
- Some counties have created ***Divisions of Transportation***.
 - Recognizes functions in urban areas that go beyond county highways, such as transit, bikeways, pedestrian amenities, and other multi-modal projects.

Transportation Responsibilities



County	County Hwy Route Miles	County Bridges	Traffic Signals
Cook	557	130	332
DuPage	220	70	324
Kane	297	60	109
Lake	300	35	164
McHenry	220	125	35
Will	256	82	37

Route miles are not always the best indicator of total maintenance responsibility. **Lane miles** are often a better indicator in urban settings, where 4- and 6-lane roads are not uncommon. For example, Cook County has 1,474 lane miles, Lake County has 876 lane miles.

Transportation Responsibilities



Annual Maintenance



Regional Planning



Technical Assistance



Implementation



Permitting

Highway Project Process





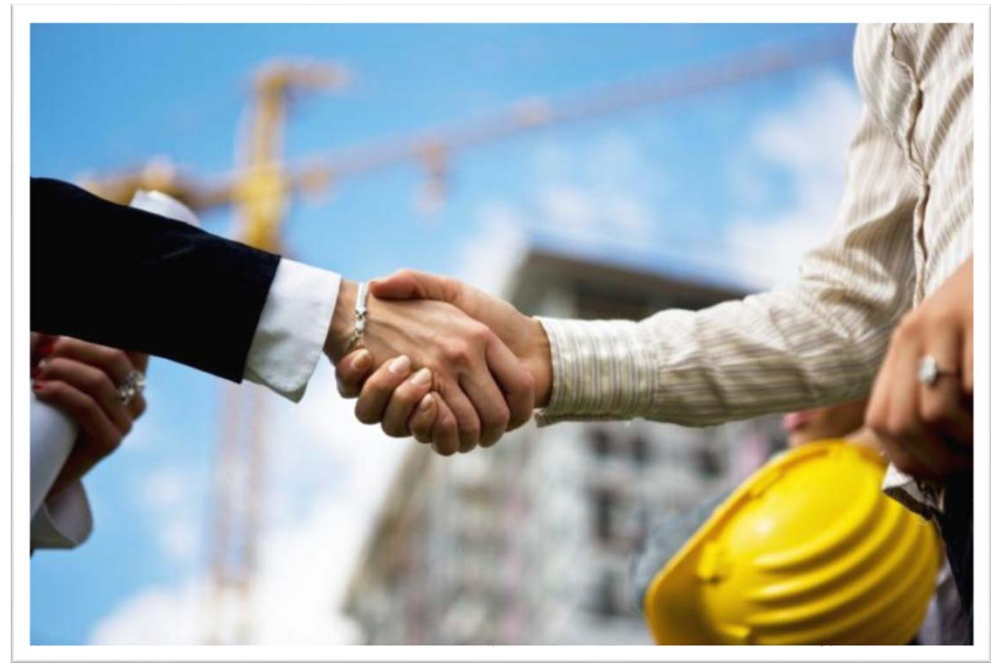
***DOING BUSINESS WITH
COUNTIES***

County – Private Contracts
Professional Services

Doing Business with the Counties

County Interactions with Private Sector Highway Industries

- Primarily involves consultants and contractors
- 5-year Highway Improvement Program guides our mission
- New 5-year Highway Improvement Program each year



Acquisition of Services

- Contractor procurement by competitive bid
- Consultant contracts are Qualifications Based Selection (QBS)





Doing Business with the Counties: Contractor Competitive Bid Procurement

1. Most lettings use IDOT bulletin

- Most projects have federal funds and are on the IDOT bulletin
- Contract process is by competitive bid
- Bids opened at IDOT

2. Occasionally local lettings

- Typically for projects with local funds
- Bid documents opened at County offices
- Typically with IDOT standard forms & bid specs for consistency

Contractor Competitive Bid Procurement





Professional Services Procurement

- Counties required to follow the **Local Government Professional Services Selection Act (50 ILCS 510)**
- County Procurement Ordinance

Professional Services Procurement

Consulting/Engineering QBS

DuPage	Contracts <\$25K: Request staffing plans, select Contracts >\$25K-\$100K: Solicit SOI's, select Contracts >\$100K: Solicit SOI's, Shortlist, RFP, Select Evaluation after project completion
Cook	RFQ, shortlist for RFP, selection Open invite for all consultants - not mandated to be IDOT pre-qualified
Kane & Lake	Prequalification – Call for SPQD, and prequalification Selection - shortlist, RFP, interviews, ranked on proposal & interview Evaluation – after project completion
McHenry	QBS Process with RFQ <ul style="list-style-type: none">• Contracts <\$100K follow <i>Consultant Selection Policy</i> with staff recommendations• Contracts >\$100K interview with Transportation Committee
Will	Follows IDOT procedures for advertising and prequalification



CHALLENGES: GROWTH AND FUNDING

Where does it come from?

What are the trends?

Budgets and Challenges

Growth in Population & Congestion

Population projections for Northeastern Illinois

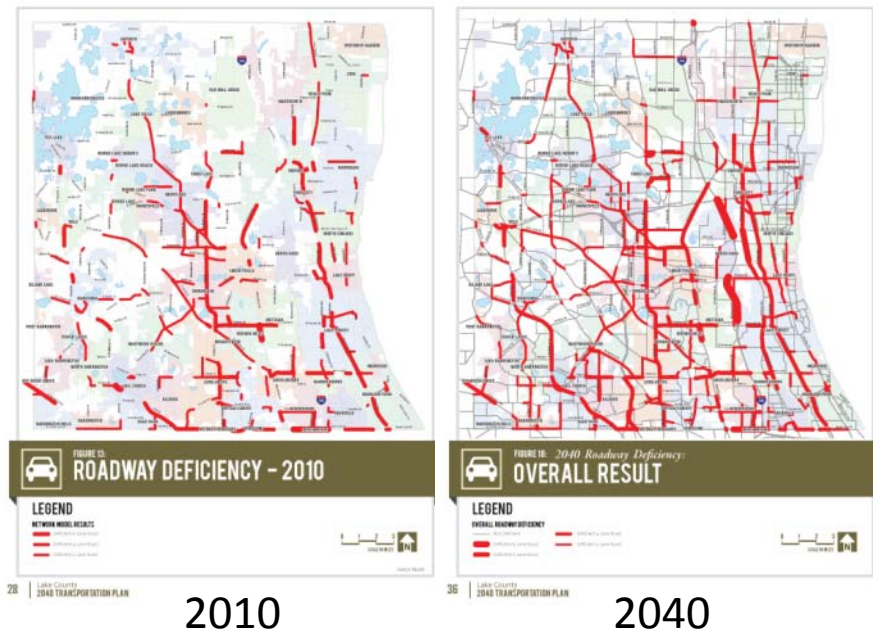
Source: CMAP GOTO 2040

8,600,000
TODAY

11,000,000
BY 2040

Example of projected roadway deficiency

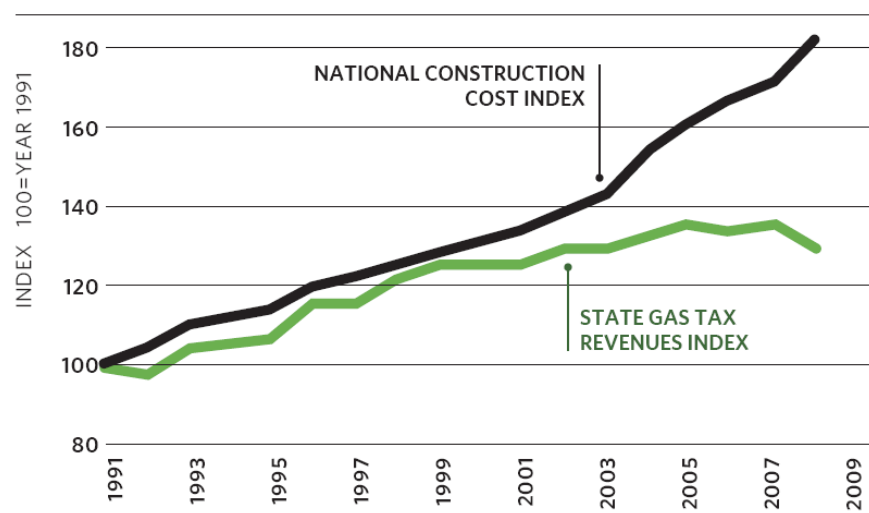
Source: Lake County 2040 Plan



The Funding Challenge

- **Unsustainable** existing funding framework
- **MFT hasn't kept pace** with rising costs
 - Federal ($\$0.18/\text{gallon}$) hasn't changed since 1993
 - State ($\$0.19/\text{gallon}$) hasn't changed since 1990

State Motor Fuel Tax revenues relative to inflation, 1991-2009



Source: CMAP GOTO 2040 & IDOT, Engineering News-Record, Bureau of Labor Statistics



State-Collected User Fees

(a portion returned to roads)

Motor Fuel Tax (MFT):

Local Agencies Receive
Formula Share

- Paid at the pump

Motor Vehicle Revenue (MVR):

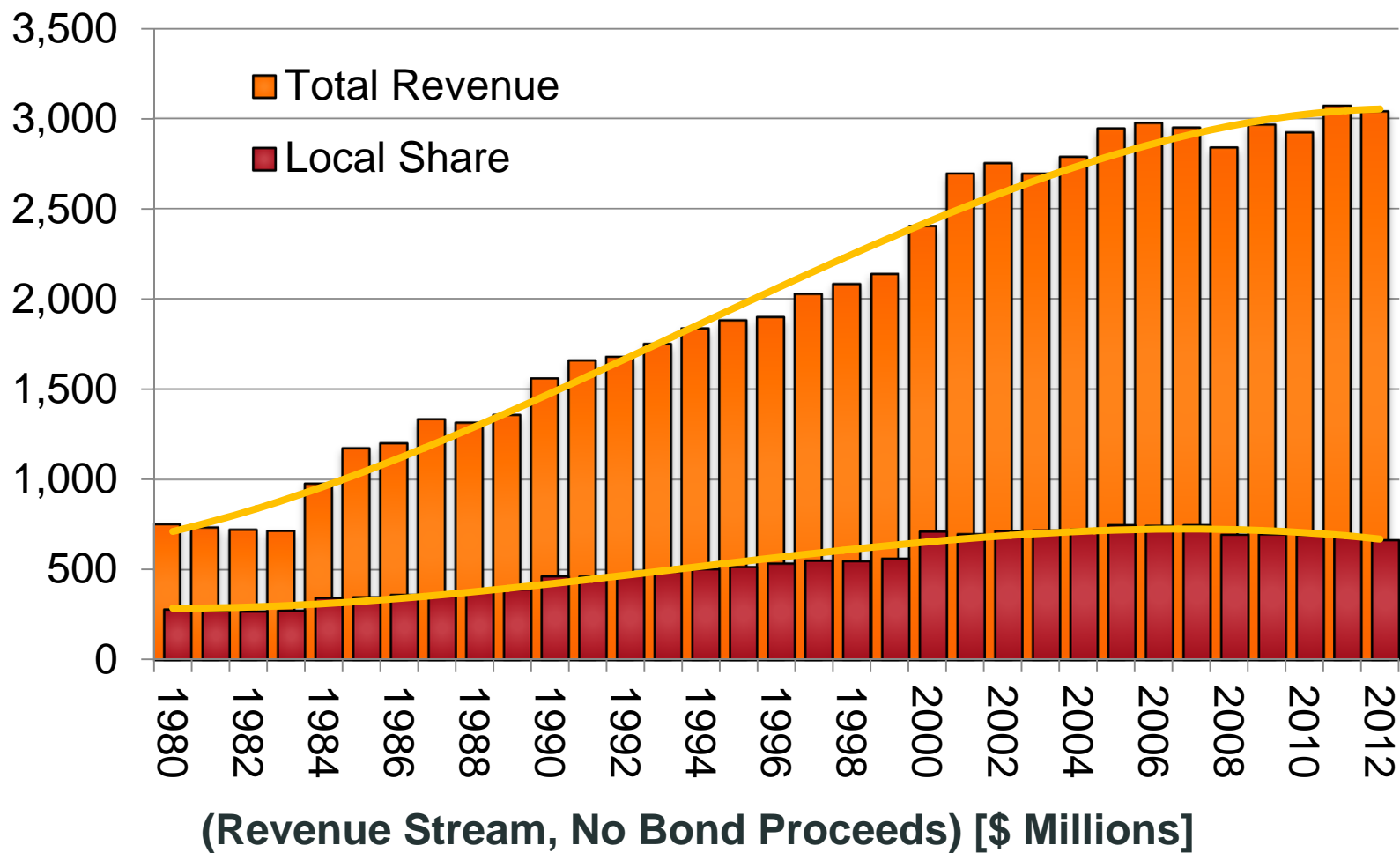
Local Agencies **DO NOT**
Receive Formula Share

- Paid to Secretary of State
 - Vehicle Registration
 - Driver's License
 - Certificates of Title



Total Revenue vs Local Share

State of Illinois
Highway User Fees Returned to Local Agencies



Funding County Transportation Programs


$$\begin{aligned} & \text{CASH RESERVES} \\ & + \text{REVENUE} \\ & - \text{OPERATIONS AND MAINTENANCE} \\ \hline & = \text{CAPITAL EXPENDITURES} \end{aligned}$$

State and Local Revenues

Motor Fuel Tax

Portion of state tax per gallon

Property Tax

Local Gas Tax

\$.04 per gallon, DuPage, Kane & McHenry

Sales Tax

1/4% RTA-Transportation and Public Safety

Capital Bill

Bonds

ICC

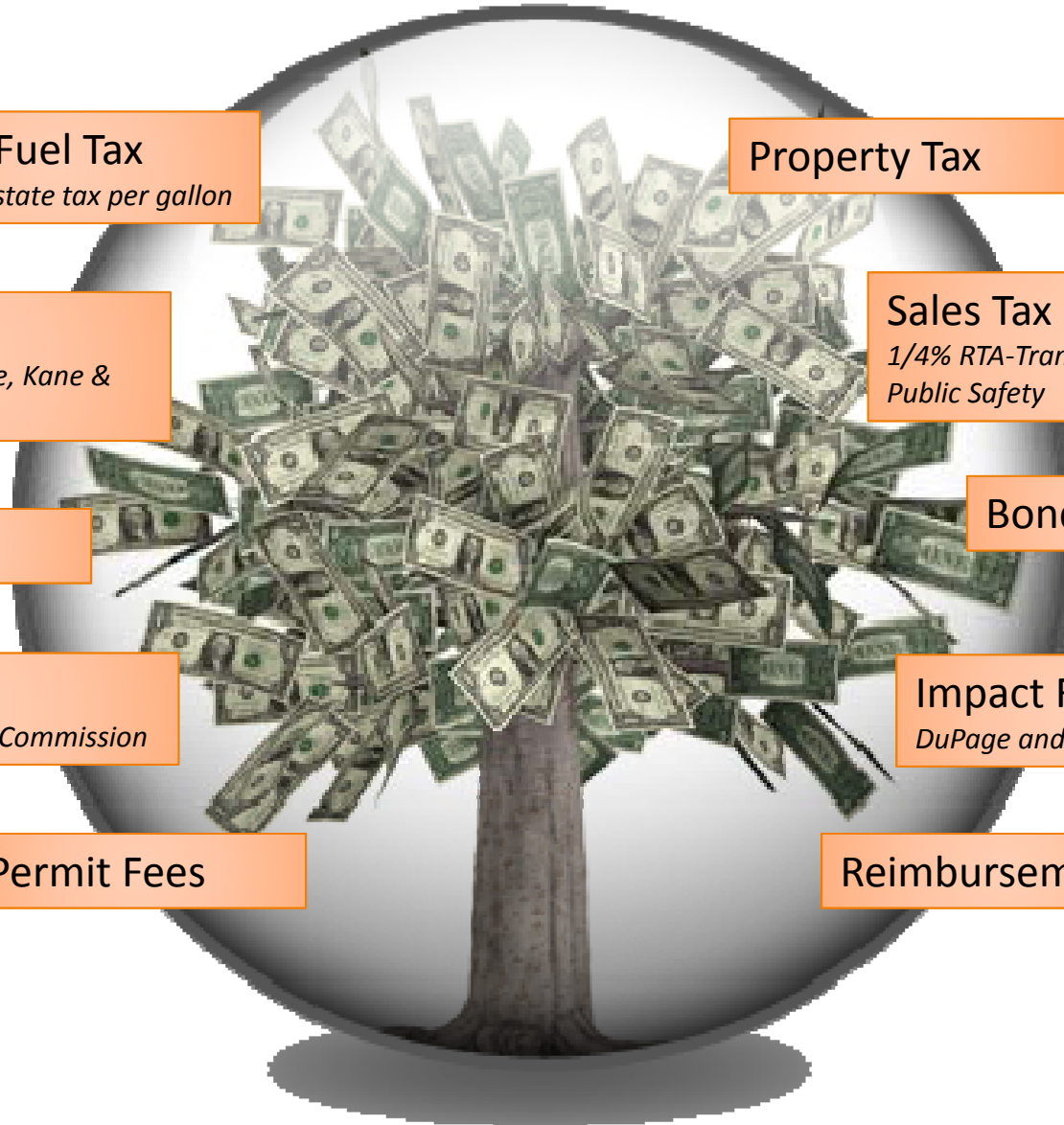
Illinois Commerce Commission

Impact Fees

DuPage and Kane only

Permit Fees

Reimbursements



Federal Revenues



CMAQ

*Congestion Mitigation
and Air Quality*

HRRRP

*High Risk Rural Roads
Program*

STP

*Surface Transportation
Program*

HSIP

*Highway Safety
Improvement Program*

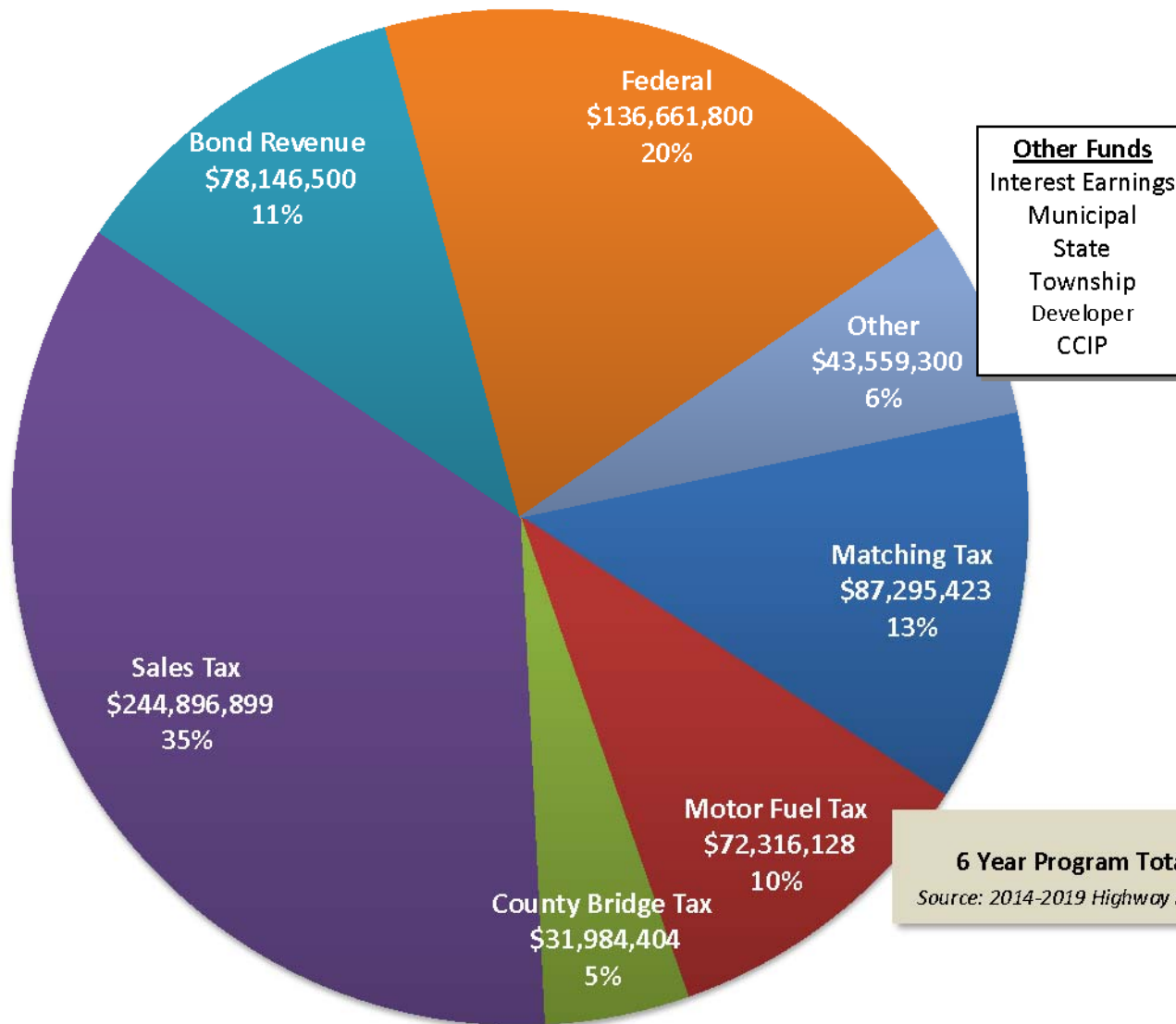
HBP

*Highway Bridge
Program*

ITEP

*Illinois Transportation
Enhancement Program*

Lake County Fund Sources





Funding

Challenges & Opportunities

Challenges

- Current funding unsustainable
- New sources/new methods
- New requirements (ADA, environmental, CCDD, etc.)
- Aging Infrastructure - needs outweigh current funding

Opportunities

- Partnerships (State, local)
- Project/fund chaining
- Project streamlining
- Letting schedules



LEADERSHIP PERSPECTIVES

Choosing a Phase I Consultant
Working with Contractors



The Perfect Phase I Consultant

- **Relevant experience**
- **Active project ownership**
- **Strong communications and management skills**
- **High quality deliverables**
- **Knowledge about Federal funding process**
- **Challenges met with creativity, innovation**
- **On time delivery**

Lessons for Consultants

- Turn around reviews promptly
- Watch the budget
- Be responsive and proactive to field questions
- Visit the worksite during construction





Lessons for Contractors

- **Communication is key**
- **Ask bid questions upfront**
- **Bad news? Give it to us all at once so we can prepare**



PROGRAM HIGHLIGHTS

System Improvement Priorities
Lake County Program Highlights



System Improvement Priorities

1

Preservation projects keep highway pavements, bridges, bikeways, signals and related items in good condition

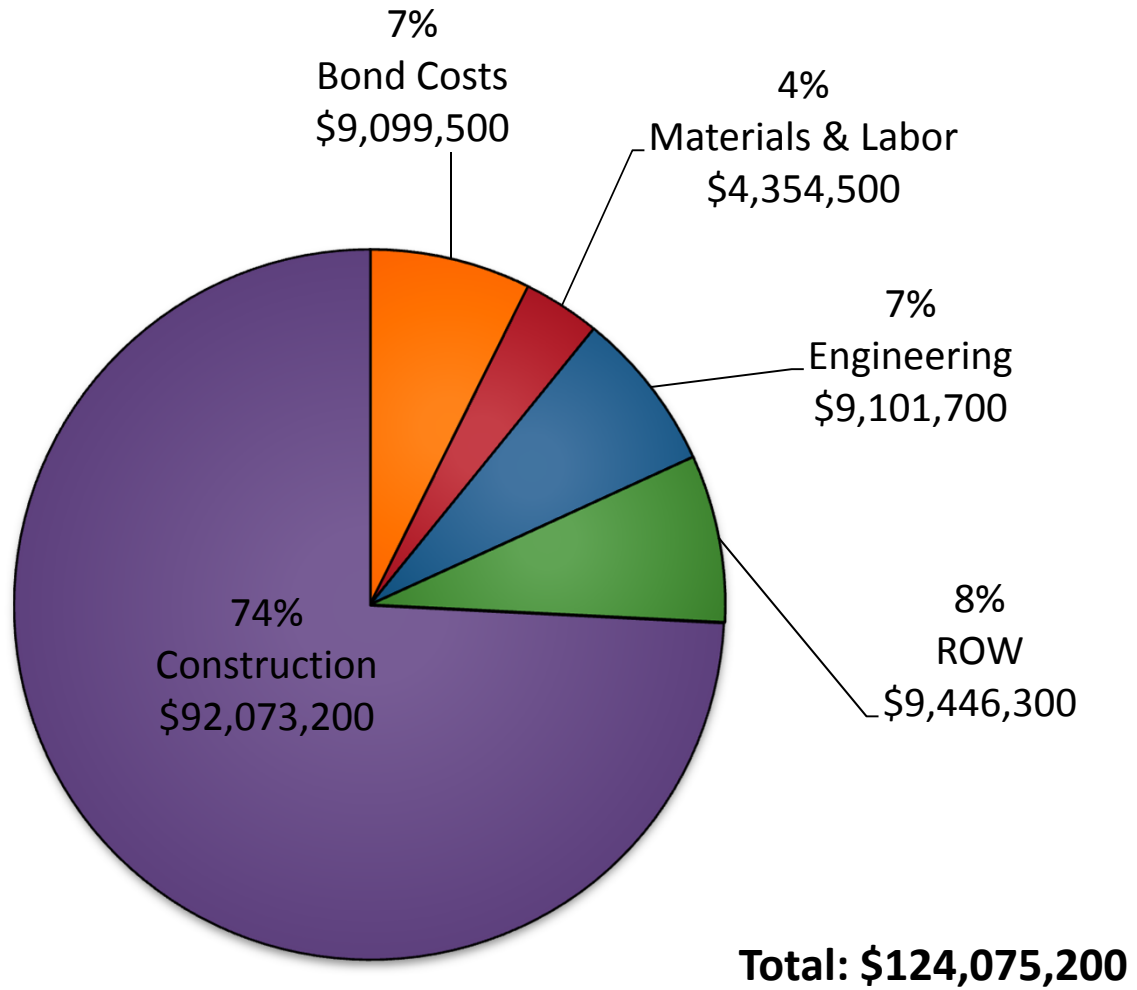
2

Modernization projects reduce delays and increase safety by accommodating short-term traffic growth and the needs of non-motorists

3

Expansion projects provide highway capacity to meet long-term traffic growth needs and provide for economic development

Lake County FY2014 Program



Highlights: Peterson Road Project



Highlights: Monaville Roundabout



***Highlights: Fairfield Road Intersection and
Bikepath Tunnels***



Highlights: Washington Street

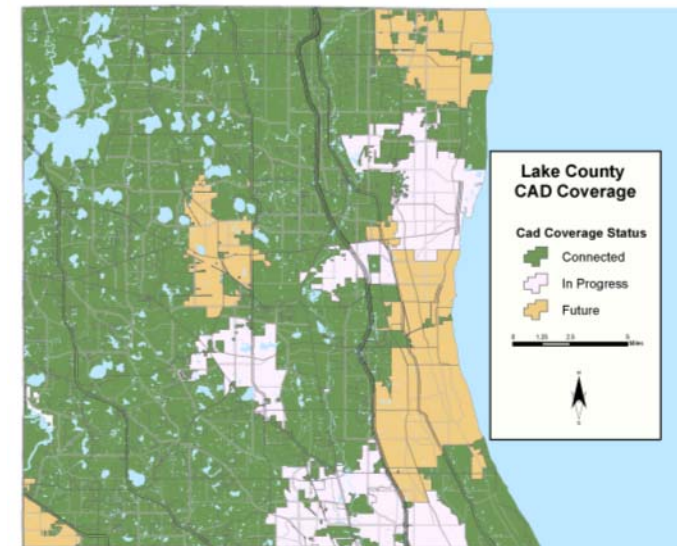
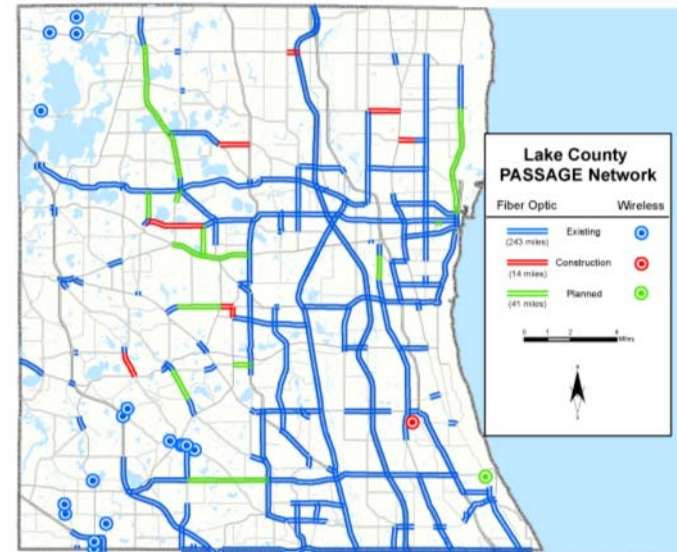


Highlights: Rollins Road at IL83



Using *PASSAGE* technology for smarter roads

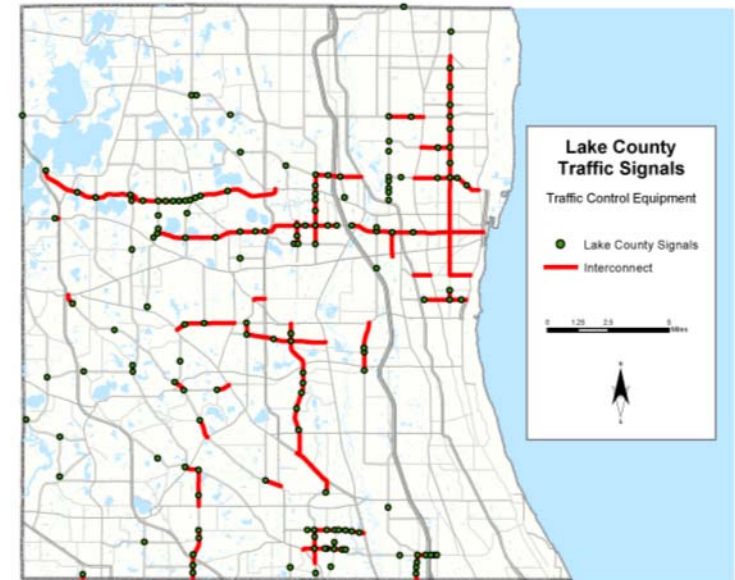
- Adaptive signal control
- Coordination with emergency responders and law enforcement
- Coordinated signal corridors



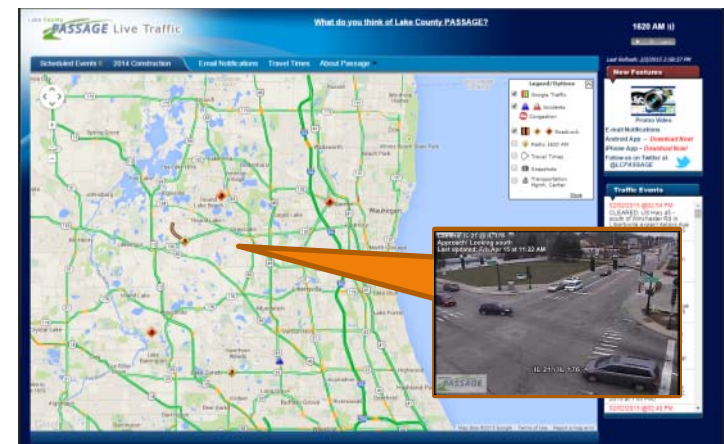
Source: LCDOT Traffic Dept. 5/5/2014

User benefits via PASSAGE technology

- **“Know Before You Go”**
 - PASSAGE website maps and lists
 - Email and text alerts
 - Mobile PASSAGE app
 - View camera shots
- Fewer travel delays
 - Less driver frustration
 - Improved air quality



Source: LCDOT Traffic Dept. 5/6/2014



Questions?

