

Michigan DOT Research Program

Steven Bower, P.E.
Engineer of Research
Michigan Department of Transportation

Presentation Outline

- Program Overview
- Recently Completed and Soon to Be Completed Research
- 2015 Research Summit
- Information Availability



Annual Research Program

- ❑ \$6 to \$8 Million
- ❑ 10 to 15 Individual Projects per Year
- ❑ 10 to 15 Multi-State Pooled Fund Studies
- ❑ University Transportation Centers and Research Centers of Excellence
- ❑ National Research Programs



Recently Completed Research

- ❑ Evaluating Pedestrian Safety Improvements (RC-1585)
- ❑ Sharing the Road: Optimizing Pedestrian and Bicycle Safety and Vehicle Mobility (RC-1572)
- ❑ Evaluating the Appropriate Level of Service for Michigan Rest Areas and Welcome Centers Considering Safety and Economic Factors (RC-1570)



Recently Completed Research

- ❑ Evaluating the Performance and Safety Effectiveness of Roundabouts (RC-1566)
- ❑ Evaluating the Performance of Passing Relief Lanes (RC-1565)
- ❑ Impact of Non-Freeway Rumble Strips, Phase 1 (RC-1575)
- ❑ Meeting the Needs of Michigan's Aging Population (RC-1592)



Recently Completed Research

- ❑ Strategies for Improving Traveler Information (RC-1559)
- ❑ Best Practices for Emergency Re Routing (RC-1581)
- ❑ Implementation of Quick Clearance (RC-1583)
- ❑ Safety Analysis of 3 to 4 lane Conversions (RC-1555)



Recently Completed Research

- ❑ Study of High Tension Cable Barrier on Michigan Roadways (RC-1612)
- ❑ Evaluating Speed Limit Policy Alternatives (RC-1609)
- ❑ Timing Issues for Traffic Signals Interconnected with Highway/Railroad Grade Crossings (RC-1578)



Recently Completed Research

- ❑ Evaluation of Concrete Pavements with Materials-Related Distress (RC-1533)
- ❑ Impact of Hydrated Cement Paste Quality and Entrained Air-Void System on the Durability of Concrete (RC-1552)
- ❑ Laboratory Evaluation of Warm Mix Asphalt (RC-1556)



Recently Completed Research

- ❑ Improved Performance of JPCP Overlays (RC-1574)
- ❑ Effect of Pile-Driving Induced Vibrations on Nearby Structures and Other Assets (RC-1600)
- ❑ Non-Destructive Evaluation Techniques for Bridge Inspection (RC-1597)



Recently Completed Research

- ❑ Improving Bridges with Prefabricated Precast Concrete Systems (RC-1602)
- ❑ Accelerated Bridge Construction (RC-1610)
- ❑ Design and Construction Guidelines for Strengthening Bridges with Fiber Reinforced Polymers (RC-1614)



Notable “soon to be completed” Research

- ❑ Connected Vehicle Test Track “Mobility Transformation Facility”
- ❑ Evaluating the use of Tow Plows
- ❑ Evaluation of UAV’s for Transportation Purposes



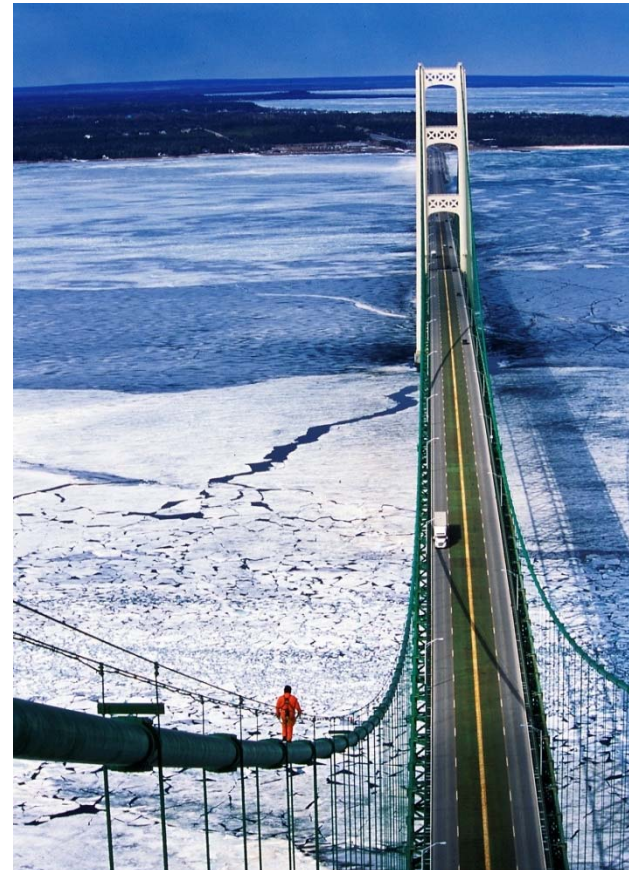
2016/2017/2018 Program Development

- ❑ Strategic Priorities (Aug-Sept 2013)
- ❑ Call for Ideas (Nov-Dec 2013)
- ❑ Idea Development (Jan-May 2014)
- ❑ **Research Summit (May 2015)**
- ❑ Problem Statements Developed for 2016/2017 Projects (May-June 2015)
- ❑ 2016/2017 Program Approval(July-August 2015)

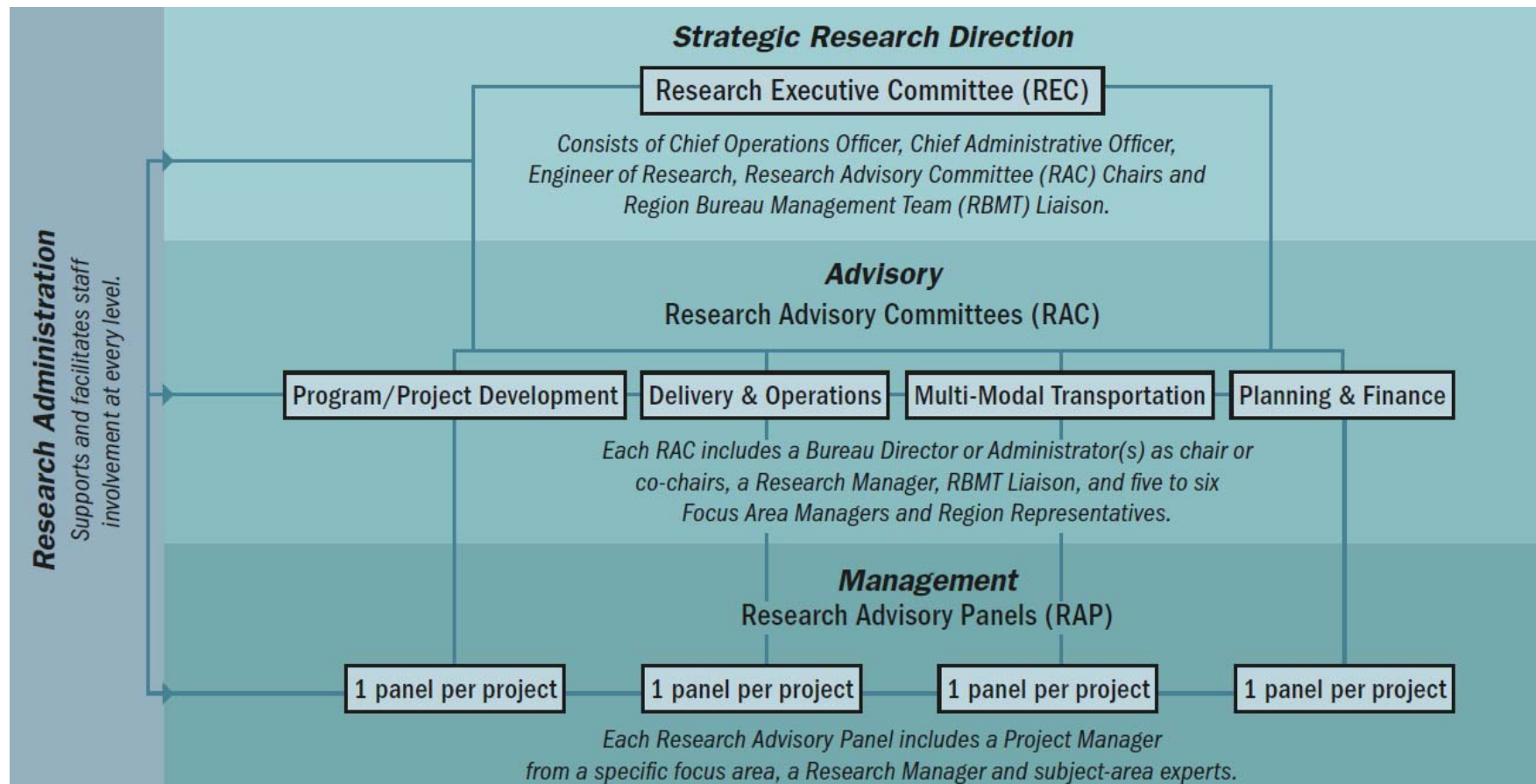


2015 Research Summit

- ❑ May 6 & May 7
- ❑ Horatio Earle Center, State Secondary Complex
- ❑ Discuss 20 to 25 Research Ideas (Handouts)
- ❑ Basis of the 2016, 2017 and 2018 Research Program



Program Development



Information Availability

- ❑ www.michigan.gov/mdotresearch
- ❑ Gov Delivery (Listservs)
- ❑ Publications
 - Newsletters
 - Spotlights
 - At A Glance
 - Success Stories

MDOT
Michigan Department of Transportation

Search

MDOT > ABOUT MDOT > HIGHWAY FIELD SERVICES > RESEARCH ADMINISTRATION

Research Administration

Our Mission:
Promoting innovative research for economic benefit and improved quality of life.

Contact Us
[Steven C. Bower](#), Engineer of Research
Phone: 517-638-7777
[Linda Feldpausch](#), Administrative Assistant
Phone: 517-638-4555
[MDOT Research Email \(for general questions\)](#)
[Research Administration Phone Contact List](#)

Quick Links

- Title VI Nondiscrimination
- Tribal Governments
- Twitter Facebook YouTube
- Mi Drive
- State Map

Program Development

- [Developing Research Projects for 2016 & 2017](#)
- [Effective Research Management](#)
- [Research Program Committee Structure](#)
- [Research Priorities 2015-2017](#)

Resources/Publications

- [Research Admin 2013 At A Glance](#)
- [Research Admin 2012 At A Glance](#)
- [Research Admin 2011 At A Glance](#)
- [Research Admin FY2014 SPR II Annual Report](#)
- [2013 Michigan DOT Innovations Report](#)
- [Right-of-Way Permit Requirements](#)
- [Research Proposal Guidelines](#)
- [Research and Implementation Manual](#)
- [University Transportation Center Administration Manual](#)
- [Transportation Research Acronyms](#)
- [What is SPR Part II](#)
- [Research Success Stories](#)
- MDOT Library
- [Research Spotlights](#)
- [Research Centers of Excellence](#)
- [Research Newsletters](#)
- [Research Reports](#)

Forms

- [A- Deliverables Table](#)
- [B- Schedule of Research Activities](#)
- [D- University Budget Form](#)

Links

- AASHTO - SCOR/RAC
- Practice-Ready Papers
- RITA
- [Research in Progress \(RIP\)](#)
- SHRP 2
- State DOTs
- TRB
- TRB Research Needs Statements
- TRID
- Turner Fairbank Highway Research Center

Questions???

- ❑ Steve Bower
Engineer of Research
- ❑ 517-636-7777
- ❑ bowers@michigan.gov