



FHWA Update for CEW 2014

Michigan Division Office

Lumberman's Monument



U.S. Department of Transportation
Federal Highway Administration



FHWA Update for CEW 2014

Michigan Division Office



Projects of Division Interest (PoDIs). This is the new term for direct FHWA Oversight of a project.

Compliance Assessment Program (CAP)

In 2014:

- 27 PoDI Inspections conducted statewide (of which 4 PoDIs were LPA projects)
- 64 CAP Core Reviews conducted statewide (approximately half were LPA projects)





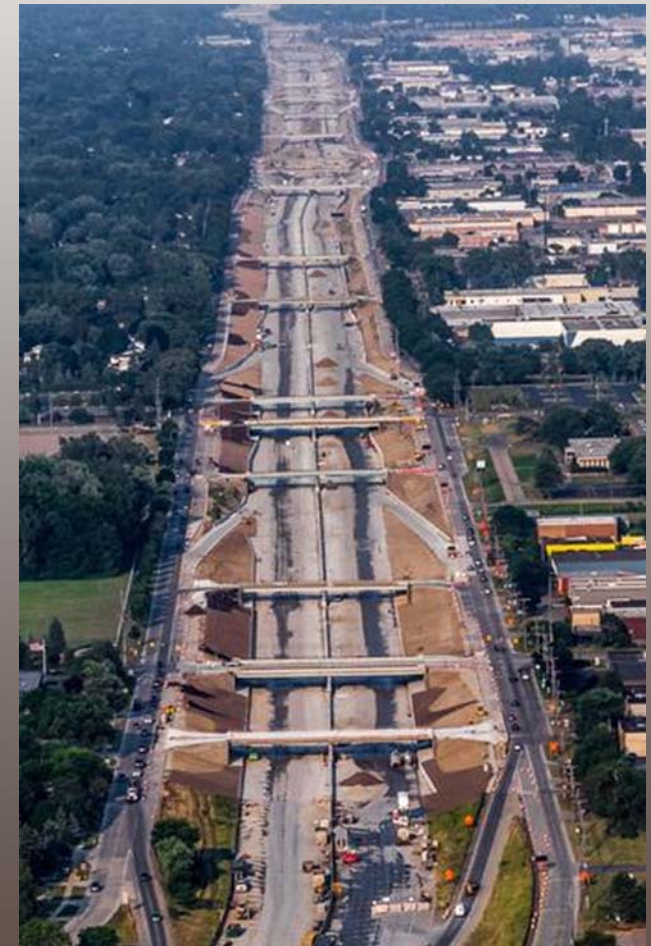
FHWA Update for CEW 2014

Michigan Division Office



On PoDI Construction Inspections, areas of Review include:

- General Issues & Staffing
- Fraud, Waste, & Abuse
- Prevailing Wage
- Mobility & Work Zone Traffic Control
- Soil Erosion & Sedimentation Control
- Job Site Postings
- ADA Compliance
- HMA & PCC construction
- Bridge construction



U.S. Department of Transportation
Federal Highway Administration



FHWA Update for CEW 2014

Michigan Division Office

- 2014 Focus Areas:
 - Claims
 - CPM
 - Stringless Paving
 - Utility delays
 - Pedestrian Traffic
 - Binder witness samples
 - Documentation for extras



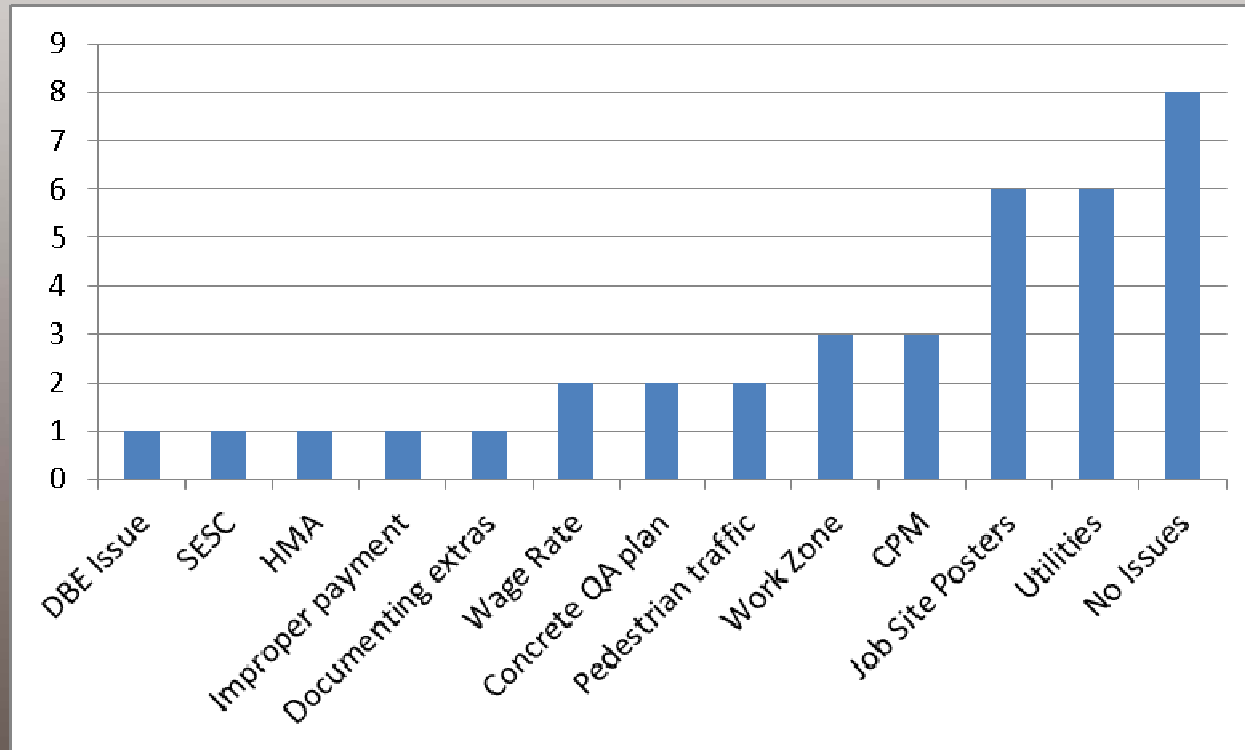


FHWA Update for CEW 2014

Michigan Division Office



2014 Findings:





FHWA Update for CEW 2014

Michigan Division Office

Lumberman's Monument

Likely Areas of Focus in 2015

- Critical Path Management
 - (CIR finding)
- Maintaining pedestrian traffic
 - (CIR and CAP finding)
- Utility delays
 - (CIR finding)
- Job site posters
 - (CIR and CAP finding)





FHWA Update for CEW 2014

Michigan Division Office

Critical Path Method (CPM)

- Payment withheld in two cases (Trunkline)
- CPM not delivered timely in two cases (Trunkline)
- FHWA and MDOT are still working to improve
 - Training for MDOT (April)
 - New Specification
 - New MDOT Specialist





FHWA Update for CEW 2014

Michigan Division Office



Pedestrian Access in Workzones:

- Findings of non-desirable Pedestrian access in workzones
- MDOT developing pedestrian workzone guidance for MOTs
- Work in progress





FHWA Update for CEW 2014

Michigan Division Office



Utility Delay impacts

- FHWA will continue to monitor utility delays
- FHWA is working with MDOT for strategy to better capture impacts





FHWA Update for CEW 2014

Michigan Division Office

Job Site Postings

- 83% compliance in 2013
- 75% compliance in 2014
- FHWA and MDOT are currently discussing changes to the 2015 season for compliance





FHWA Update for CEW 2014

Michigan Division Office

Lumberman's Monument

Wage Rate Interviews

- Follow CA 2014-08
- Not a focus area for 2015, however;
- FHWA will reviewing for comments for unknown hourly rate.

Michigan Department
Of Transportation
1156-T1 (01/14)

**Minimum Wage Rate
Interview Sheet
Tier 1
(Field Review)**

File 401
DISTRIBUTION:
ORIGINAL- Project File

This Form will meet the WRI Requirements of the Prevailing Wage Procedures

CONTRACTOR NAME <input type="checkbox"/> Prime Contractor <input type="checkbox"/> Subcontractor		PAYROLL PERIOD ENDING	
CONTRACT ID	REGION/TSC	INTERVIEW DATE	INTERVIEWER
PROJECT ENGINEER	PROJECT LOCATION	POSTINGS AND WAGE RATES POSTED IN CON- SPICUOUS PLACE ON JOB? <input type="checkbox"/> YES <input type="checkbox"/> NO	
EMPLOYEE	EMPLOYEE REPLY	BASE HOURLY RATE PER CONTRACT	PAYROLL RECORDS
NAME	WHO PAYS YOU?	WAGE RATE DECISION # AND DATE:	PAID BY:
SS # (LAST FOUR DIGITS)			
CONTACT INFORMATION: (Needed for follow up information)			
CELL: _____	HOURLY RATE		HOURLY RATE
HOME: _____	Reg. \$ _____	Reg. \$ _____	Reg. \$ _____
ARE YOU A UNION EMPLOYEE <input type="checkbox"/> YES <input type="checkbox"/> NO	O.T. \$ _____	F.B. \$ _____	F.B. \$ _____
PAYMENT OF FRINGES: As Wages <input type="checkbox"/>		Total \$ _____	Total \$ _____



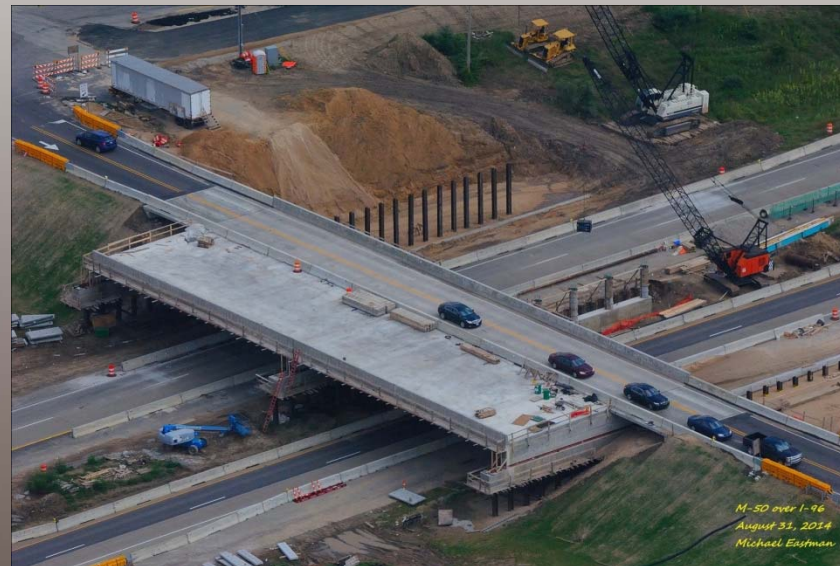


FHWA Update for CEW 2014

Michigan Division Office

Lumberman's Monument

Questions?



U.S. Department of Transportation
Federal Highway Administration