



Building a Strategic Framework for Michigan's Integrated Infrastructure Asset Management

Strategic Planning Session 2018

- ✓ Continue tenants of program
- ✓ Revised TAMC Mission
- ✓ Reviewed pending legislation & impact to TAMC and partnering organizations
- ✓ Review efforts of Regional Asset Management Pilots
- ✓ Committee assignments of action items

2017 – 2019 TAMC Work Program Update



House Bills 5335, 5406 & 5408

Mission Statement

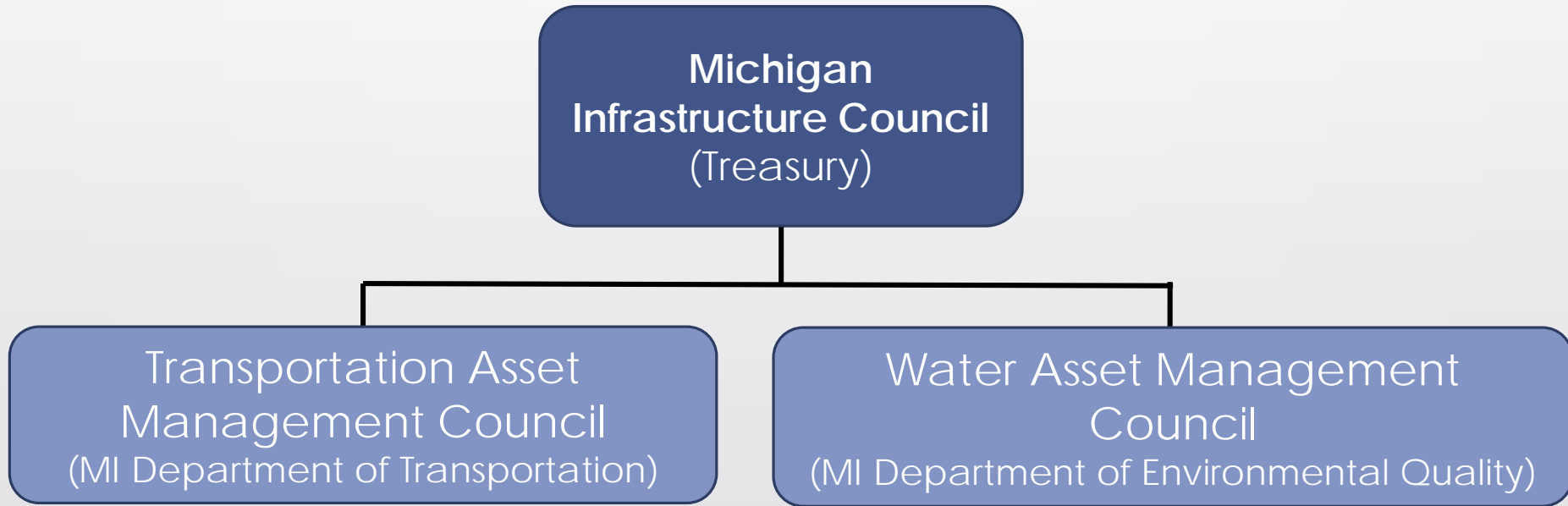


To develop and support excellence in managing Michigan's Transportation assets by:

1. Advising the Legislature, State Transportation Commission (STC), Michigan Infrastructure Council (MIC), and Transportation Committees.
2. Promoting Asset Management Principles.
3. Providing tools and practices for road agencies.
4. Collaborate and coordinate with Water Asset Management Council (WAMC) and other asset owners.



Building the Foundation for Statewide Integrated Asset Management



- P.A. 323 of 2018 creates the Michigan Infrastructure Council (MIC)
- P.A. 324 of 2018 creates the Water Asset Management Council (WAMC)
- P.A. 325 of 2018 realigns the Transportation Asset Management Council (TAMC) under MIC

House Bills Turn into Law



Public Act 323 of 2018

- Creates Michigan Infrastructure Council (MIC)
- Statewide Asset Management Database
- 30-year Infrastructure Investment Strategy

Public Act 324 of 2018

- Creates Water Asset Management Council (WAMC)
- Develop template for Water Asset Management Plans (WAMP) by October 2019



House Bills Turn into Law



Public Act 325 of 2018

- Amends Act 51 - TAMC under MIC
- Adds asset classes of culverts and signals
- Defines elements of Transportation Asset Management Plans (TAMP)
- TAMC to Develop template for TAMP by October 2019
- Schedule for largest road agencies by October 2019





The Michigan Infrastructure Council

Define a vision for Michigan's infrastructure that provides the foundation for public and environmental health, economic prosperity and quality of life

3-Year Workplan

(July 2, 2018 - July 1, 2021)

July 2, 2018

P.A. 323, 324, 325
MIC and WAMC
Established
TAMC Realigned

March 5, 2019

MIC 180-Day
Strategy Due
3 Year Work Plan
Established

October 1, 2019

WAMC/TAMC
Asset Management
Templates Due

September 30, 2020

MIC Annual Report Due

July 1, 2021

30-Year Integrated
Infrastructure
Strategy Due



September 6, 2018

MIC Convenes
First Meeting

September 30, 2019

MIC Annual Report Due

July 1, 2020

30-Year Integrated
Infrastructure
Strategy Draft Due

October 1, 2020

First 1/3 WAMC/TAMC
Asset Management
Plans Due



Michigan Infrastructure Council Goals and Activities





Collaborate

Facilitate a coordinated, holistic approach that optimizes the contributions of all who manage and use Michigan's infrastructure

- Conduct Regional Summits
- Launch Cross-Asset Portal
- Lead Efforts to become a Trusted Resource

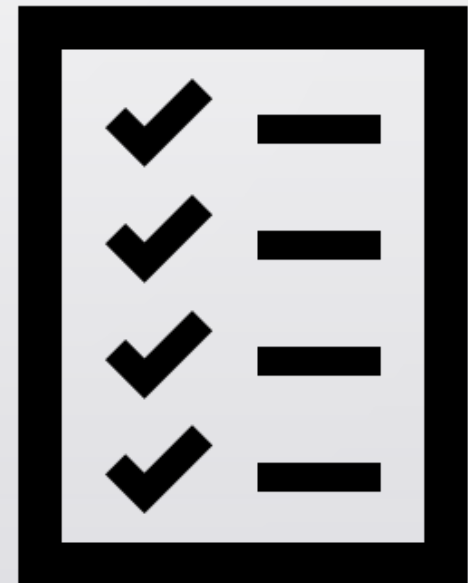




Coordinate

Enhance the alignment of projects and programs to ensure that Michigan's infrastructure is effectively and efficiently operated, maintained and constructed

- Work Toward Funding Alignment
- Standardize Regulatory Requirements
- Leverage Subject Matter Experts to Implement Best Practices





Prioritize

Establish and document the condition of Michigan's infrastructure to identify the needs of greatest priority

- Create Common Definitions and Standards
- Evaluate Regional Variations
- Develop Decision Guides for Local Leaders





Invest

Determine, recommend and promote adequate funding for Michigan's infrastructure and promote effective and efficient investments to achieve maximum benefit

- Support Bold and Creative Funding Strategies
- Work Toward Funding Alignment
- Develop Budget and Funding Recommendations





Educate

Provide accurate and trusted information to support effective infrastructure decisions

- Establish Performance Metrics and Target Goals
- Create a Common “Glossary” Across Assets
- Build and Maintain Infrastructure Dashboard



Hang On... Help is on the Way

ROBERT LANG | PHOTOGRAPHY



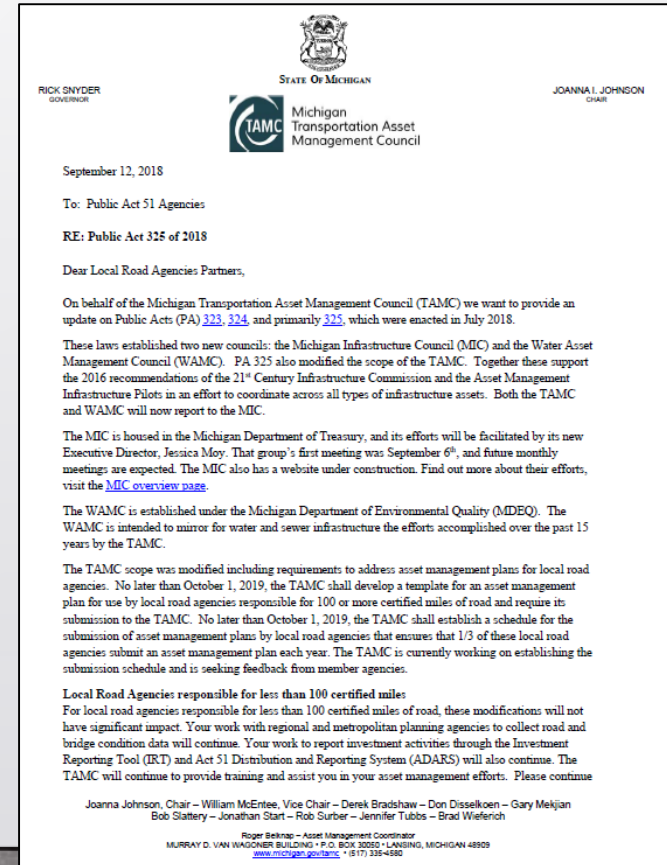
TAMC'S NEW ROLE WITH THE MIC

TAMC Letter to Act 51



Public Act 325 of 2018 – TAMC Action Items

- Letter 9/12/18 Distributed to Act 51 Agencies & TAMC Partner Agencies (CRA/MML/MAR/MTPA)
- Defines “Who” & “What”
- Provides Guidance to the “Who”
- Provides a Status of Progress Towards the “What”



Who: Largest Road Agencies



Public Act 325 of 2018 – Largest Road Agencies

- Responsible for 100 or More Certified Miles
- All 83 County Road Departments and Commissions
- 39 of Michigan's Largest Cities:

Ann Arbor
Battle Creek
Bay City
Burton
Dearborn
Dearborn Heights
Detroit
Farmington Hills
Flint
Garden City
Grand Rapids
Holland
Jackson

Kalamazoo
Kentwood
Lansing
Lincoln Park
Livonia
Midland
Muskegon
Norton Shores
Novi
Pontiac
Port Huron
Portage
Rochester Hills

Romulus
Roseville
Royal Oak
Saginaw
Southfield
St Clair Shores
Sterling Heights
Taylor
Troy
Walker
Warren
Westland
Wyoming

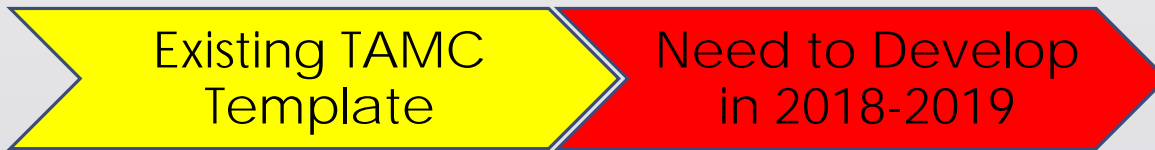
What: Asset Management Plans Defined



Public Act 324 and 325 of 2018 Requires Plans to Have 7 Elements:



Status of TAMC's Asset Management Plan Template:



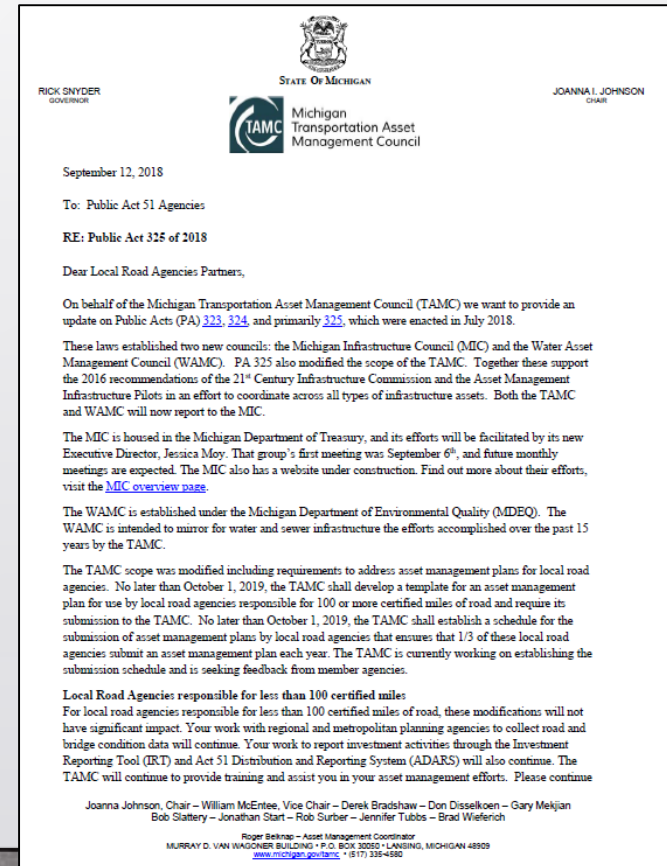
* TAMC to Revise Template & Re-Launch Asset Management Training Workshops



TAMC Letter to Act 51 Agencies

Public Act 325 of 2018 – TAMC Action Items

- Suggests Agencies Utilize TAMC's Revised TAMP Template
- TAMC to Develop 3-Year Schedule for Submittal of TAMPs
- Seeking Input on Process for Creating the Schedule
- Seeking Volunteer Agencies to "Go First"
- Provides Guidance on Culverts & Traffic Signals



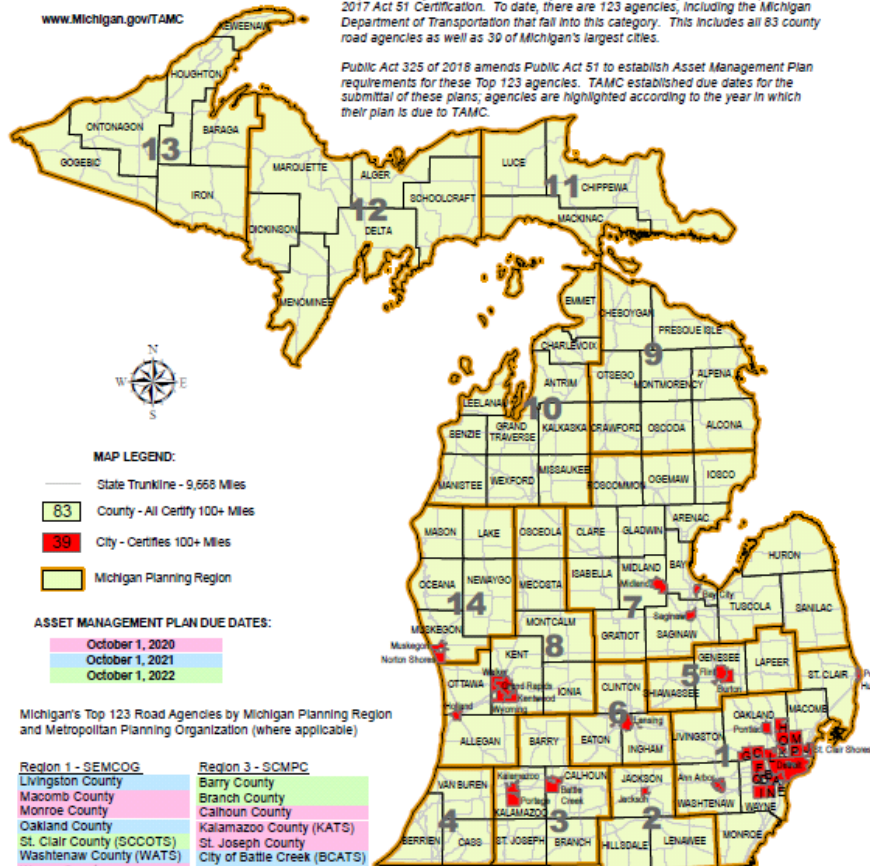


Michigan's Top 123 Road Agencies

Map indicates jurisdictions that certify 100 miles of roadways or more as part of their 2017 Act 51 Certification. To date, there are 123 agencies, including the Michigan Department of Transportation that fall into this category. This includes all 83 county road agencies as well as 39 of Michigan's largest cities.

Public Act 325 of 2018 amends Public Act 51 to establish Asset Management Plan requirements for these Top 123 agencies. TAMC established due dates for the submittal of these plans; agencies are highlighted according to the year in which their plan is due to TAMC.

www.Michigan.gov/TAMC



MAP LEGEND:

- State Trunkline - 9,668 Miles
- 83 County - All Certify 100+ Miles
- 39 City - Certifies 100+ Miles
- Michigan Planning Region

ASSET MANAGEMENT PLAN DUE DATES:

- October 1, 2020
- October 1, 2021
- October 1, 2022

Michigan's Top 123 Road Agencies by Michigan Planning Region and Metropolitan Planning Organization (where applicable)

Region 1 - SEMCOG

- Livingston County
- Macomb County
- Monroe County
- Oakland County
- St. Clair County (SCCOTS)
- Washtenaw County (WATS)
- Wayne County
- City of Ann Arbor (WATS)
- City of Dearborn (A)
- City of Dearborn Heights (B)
- City of Detroit
- City of Farmington Hills (C)
- City of Garden City (D)
- City of Lincoln Park (E)
- City of Livonia (F)
- City of Novi (G)
- City of Pontiac
- City of Port Huron (SCCOTS)
- City of Rochester Hills (H)
- City of Romulus (I)
- City of Roseville (J)
- City of Royal Oak (K)
- City of Southfield (L)
- City of St. Clair Shores
- City of Sterling Heights (M)
- City of Taylor (N)
- City of Troy (O)
- City of Warren (P)
- City of Westland (Q)
- Region 2 - R2PC
- Hillsdale County
- Jackson County (JACTS)
- Lenawee County
- City of Jackson (JACTS)

Region 3 - SCMPC

- Barry County
- Branch County
- Calhoun County
- Kalamazoo County (KATS)
- St. Joseph County (KATS)
- City of Battle Creek (BCATS)
- City of Kalamazoo (KATS)
- Region 4 - SWMPC
- Berrien County
- Cass County
- Van Buren County
- Region 5 - GLSRV
- Genesee County
- Lapeer County
- Shiawassee County
- City of Burton
- City of Flint
- Region 5 - TCRPC
- Clinton County
- Eaton County
- Ingham County
- City of Lansing
- Region 7 - EMCOG
- Arenac County
- Bay County (BCATS)
- Clare County
- Gladwin County
- Gratiot County
- Huron County
- Iosco County
- Isabella County
- Midland County (MATS)
- Ogemaw County

- Roscommon County
- Saginaw County (SMATS)
- Sanilac County
- Tuscola County
- City of Bay City (BCATS)
- City of Midland (MATS)
- City of Saginaw (SMATS)
- Region 6 - WMRPC
- Allegan County
- Ionia County
- Kent County (GVMC)
- Mecosta County
- Montcalm County
- Osceola County
- Ottawa County
- City of Grand Rapids (GVMC)
- City of Holland (MACC)
- City of Kentwood (GVMC)
- City of Walker (GVMC)
- City of Wyoming (GVMC)
- Region 9 - NEMCOG
- Alcona County
- Alpena County
- Cheboygan County
- Crawford County
- Montmorency County
- Oscoda County

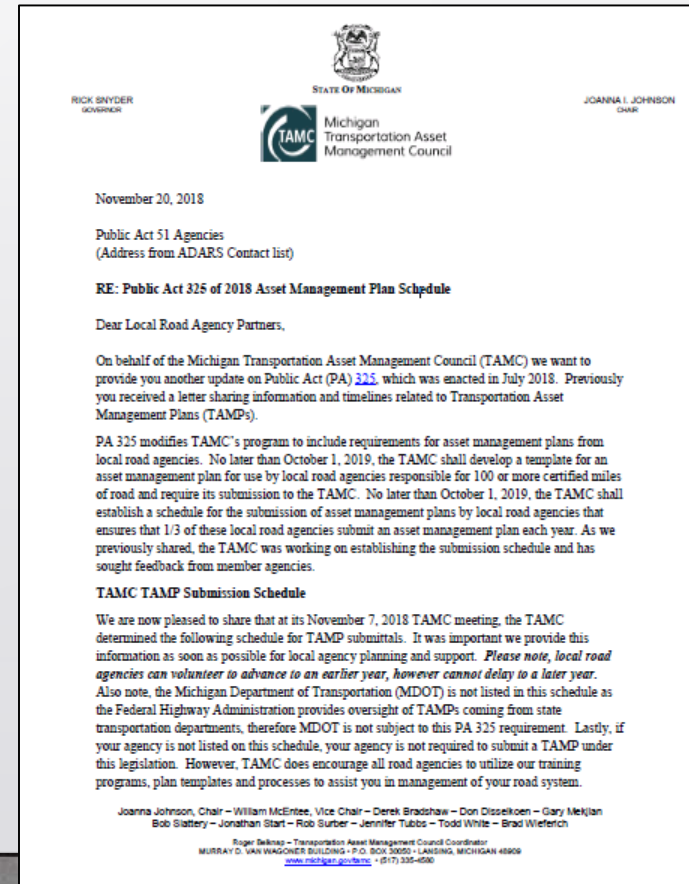
- Otsego County
- Presque Isle County
- Region 10 - Networks NW
- Antrim County
- Benzie County
- Charlevoix County
- Emmet County
- Grand Traverse County
- Kalamazoo County
- Leelanau County
- Manistee County
- Missaukee County
- Wexford County
- Region 11 - EUPRPDC
- Chippewa County
- Lucas County
- Mackinac County
- Region 12 - CUPPAD
- Alger County
- Delta County
- Dickinson County
- Marquette County
- Menominee County
- Schoolcraft County
- Region 13 - WUPPDR
- Baraga County

- Gogebic County
- Houghton County
- Iron County
- Keweenaw County
- Ontonagon County
- Region 14 - WMSRDC
- Lake County
- Mason County
- Muskegon County
- Newaygo County
- Oceana County
- City of Muskegon
- City of Norton Shores
- The Michigan Department of Transportation owns trunkline facilities within every Planning Region and Metropolitan Planning Organization boundary in Michigan. The Federal Highway Administration establishes requirements and timeframes for Asset Management Plans for State Transportation Departments.

TAMC Letter to Act 51 Agencies

Public Act 325 of 2018 – TAMP Schedule

- 11/20/18 Provided Submission Schedule TAMC to Develop 3-Year Schedule for Submittal of TAMPs
- Update on TAMC TAMP Template effort



2018 Culvert Pilot

Significance to TAMC:

- Need for Culvert Data in TAMP
- TAMC Bridge Committee Policy Guidance from Pilot
- Thank you to 50 Local Agencies who participated!



So, What's New with TAMC?



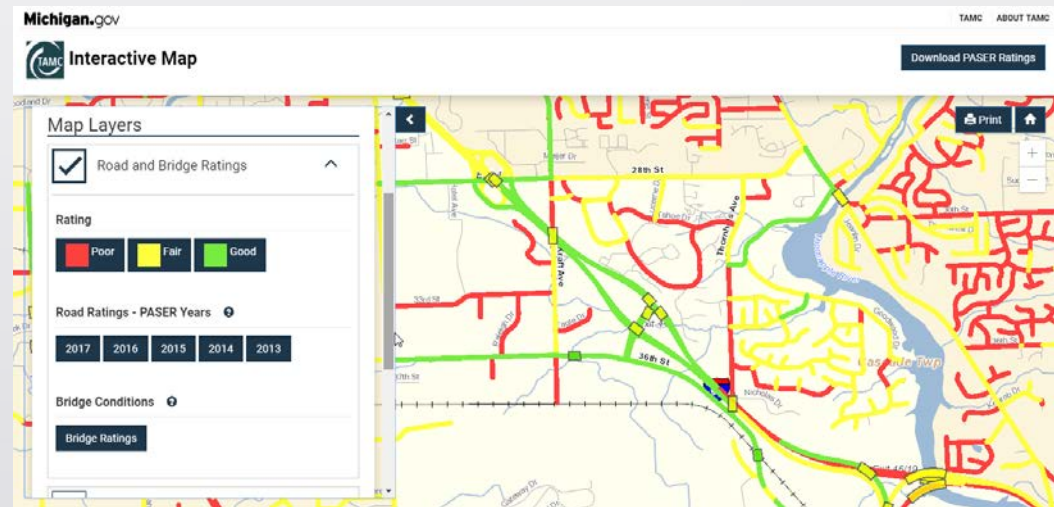
1. Michigan's 2018 Roads & Bridges Annual Report – by May 2nd
2. Strategic Planning Session – June 5, 2019
3. MIC, WAMC Coordination
4. Culverts/Traffic Signals
5. Local Pavement Warranty Program Reporting
6. PASER Certification Policy



TAMC Dashboards & Interactive Map



- Assists with Local Agency Compliance of Public Acts 506 of 2012 and 301 of 2014
- Both Technologies Overhauled in 2017-2018
- TAMC Dashboards
 - ✓ Pavement
 - ✓ Bridge
 - ✓ Traffic
 - ✓ Safety
 - ✓ Maintenance
 - ✓ Finance



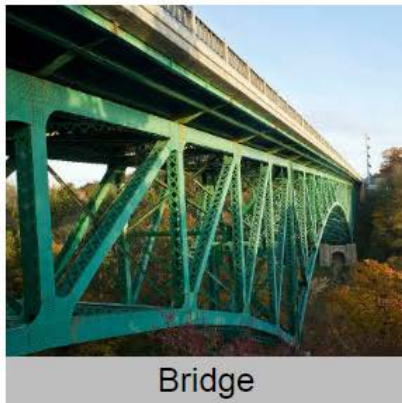


TAMC Dashboards

The dashboards depicted below show the condition, operation, and investment in Michigan's public road system. Pavement condition information is based on paved surface ratings for state highways as well as roads under the jurisdiction of Michigan's counties, cities and villages. Statewide there are over 10,000 public road bridges. Bridge conditions are based on bi-annual inspections of state, county, city and village owned bridges. The number of traffic accidents is a measure of how effectively the road system is performing. Maintenance is required to keep roads and bridges performing as intended. These activities include: snow removal, patching, grading, and mowing. Capital investments are necessary to extend the useful life of any asset including roads and bridges. The financial pie charts illustrate how investments in the road and bridge system are made.



 **Pavement**

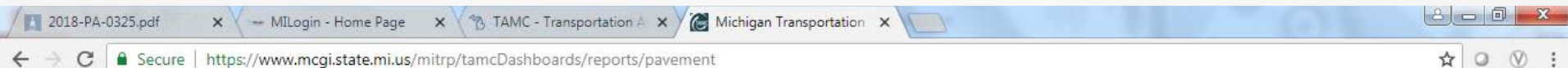


Bridge



Traffic

TAMC Dashboards & Interactive Map



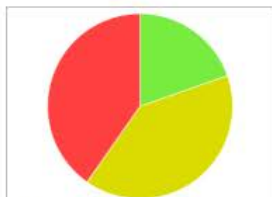
Michigan.gov

HOME TAMC ABOUT TAMC

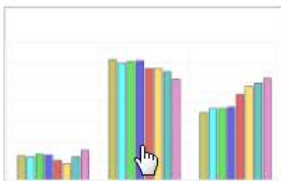
 **Dashboards** > Pavement

PAVEMENT

Please choose a Pavement Report from the below options.



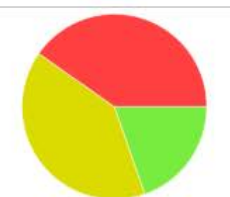
Pavement Conditions



Trend Analysis



Pavement Forecast



Non-Fed Aid



Pavement Comparison

Quick Announcements



- Spring Asset Management Conference – May 22, Gaylord
- Seeking Nominations for Individual & Organization Awards
- 2019 Training Schedules
 - ✓ PASER and Investment Reporting Training Events Coordinated
 - ✓ Asset Management Plan Workshops
 - ✓ Local Elected Officials
- Reimbursement requests for 2019 paved non-federal data collection: See your RPO/MPO
- Please submit your paved non-federal aid data with/without reimbursement

TAMC Resources

////////////////////

- Website: www.Michigan.gov/TAMC

- TAMC Help Desk: (517) 373-7910

- Roger Belknap, TAMC Coordinator

(517) 335-4580

belknapr@Michigan.gov



Michigan
Transportation Asset
Management Council