

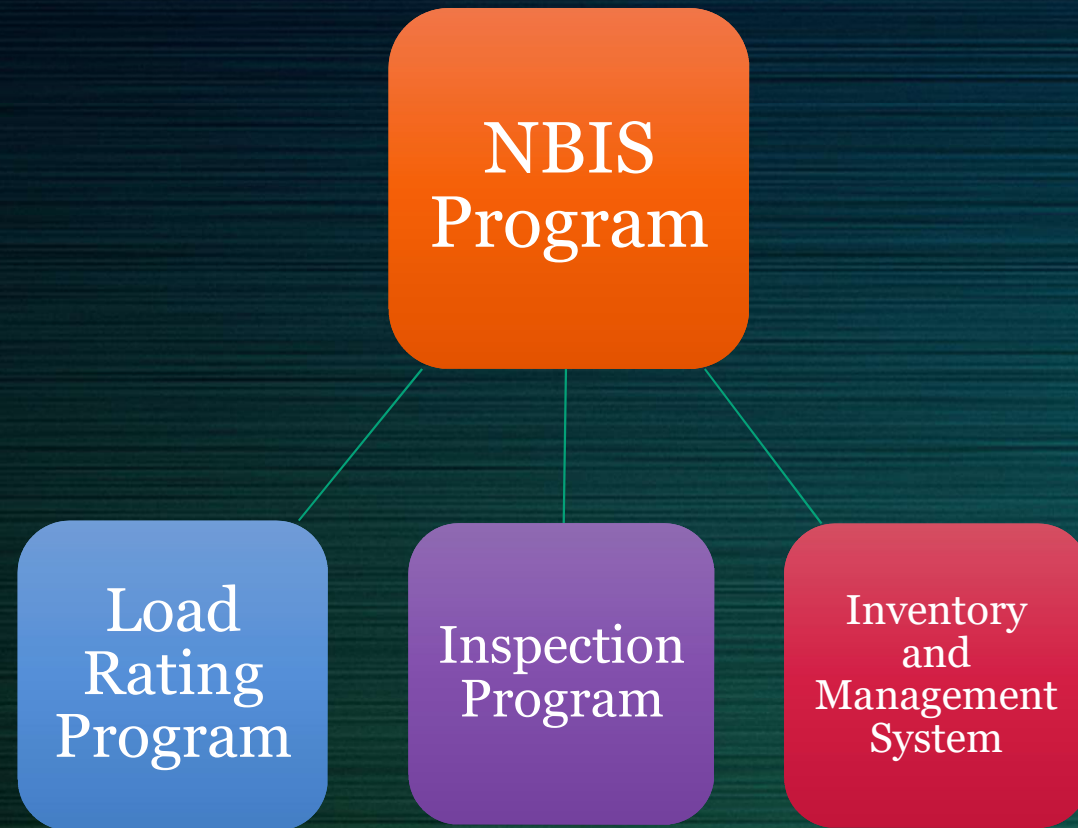
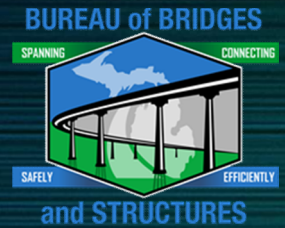
# NBIS Update

Bridge Management Section – NBIS Proposed Changes



Brian Zakrzewski, PE  
NBI Program Manager  
MDOT Bureau of Bridges and Structures

# Who We Are:





# Load Rating Program

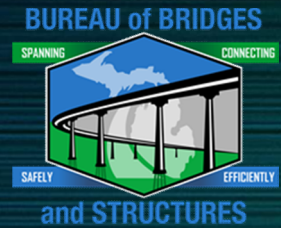
Load  
Rating  
Program

Creightyn McMunn, PE  
Load Rating Program Manager

4 - Load Rating Engineers  
1 - Load Rating Technician  
1 - Student Assistant



# Structure Inspection Program



Inspection  
Program

Allie Nadjarian, PE  
Structure Inspection Program Manager

3 Engineer Specialists

- Statewide Fracture Critical
- Statewide Large Deck/Fatigue Sensitive
- Statewide Scour



# Structure Inventory



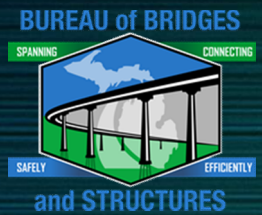
Inventory  
and  
Management  
System

3 Inventory Engineers

- Management Systems
- Local Agency Contact
- SQL Query

1 Data Analyst

# Proposed Changes to the NBIS



U.S. Department of Transportation  
**Federal Highway Administration**  
Office of Infrastructure

## Review of Proposed Changes to the National Bridge Inspection Standards (NBIS)



FHWA is the source of all images unless otherwise noted.

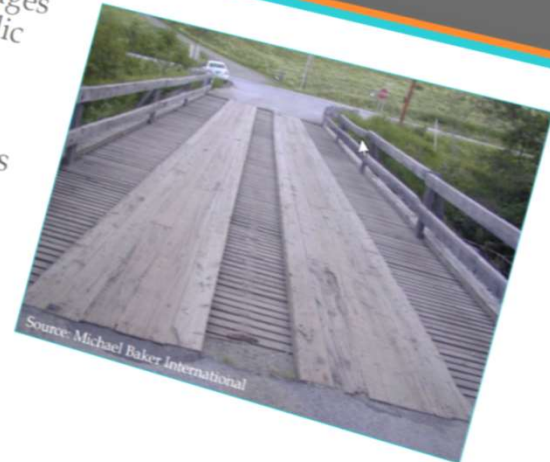


# Global Changes

- Bridges Included
- New Definitions
- Align with NTIS
- Units

## 650.303 Applicability

- Include private owned bridges that are connected to a public road on both sides of the bridge
- Include tribally owned bridges



Source: Michael Baker International

# Inspection Procedures



## 650.313 Inspection Procedures

- 650.313(i), (j), (k) Load Rating, Load Posting, Closed Bridges
  - Load rate within 3 months of initial inspection and when changes warrant re-rating
  - Load rate for routine and special permit loads
  - Load post within 30 days of valid load rating or awareness of need
  - Develop and document criteria for when a bridge is to be closed



Source: Michael Baker International

20

Changes to:

- Post Construction
- Underwater Insp.
- NSTM Inspections
- Load Rating
- Critical Findings
- Inspection Date



# Inspector Qualifications

Changes to:

- Team Leader
- Refresher Training
- NSTM Training
- Underwater Training

And:

- MDOT Practical Exam

## 650.309 Qualifications of Personnel

- Team leaders for nonredundant steel tension member (NSTM) inspections must have NSTM inspection training
- Underwater divers must have underwater bridge inspection training



# Inventory Changes

## 650.315 Inventory

- Data reported in accordance with Specifications for the National Bridge Inventory
- Data must be updated within three months of field portion of inspection is completed
- Establish and document a process that ensures the timeframes are met



23

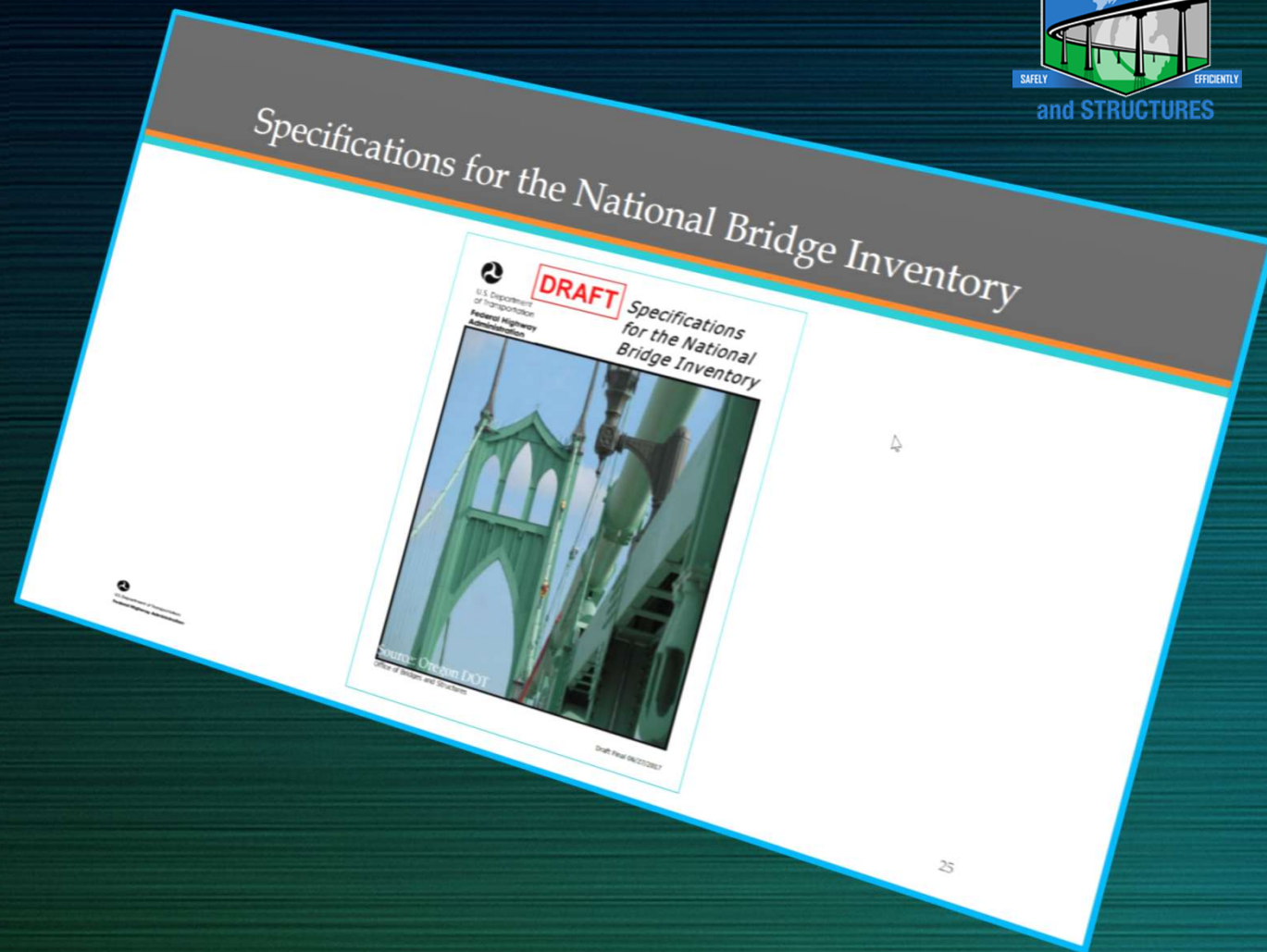
Changes to:

- Reference Docs
- Timeframes
- Management

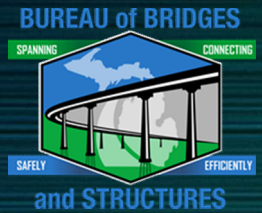


# Reference Docs

- MBE
- MBEIM
- SNBI
- SNBI (elements)



# What's next?



## What's Next?

- Federal Register notice
- Review comments
- Develop Final Rule
- Publish
- Transition Period



39

- Comments Sent
- Signature
- Publish
- Implementation



# QUESTIONS ?

Bridge Management Section – NBIS Proposed Changes



Brian Zakrzewski, PE  
NBI Program Manager  
MDOT Bureau of Bridges and Structures  
(517) 243-9473  
[zakrzewskib@Michigan.gov](mailto:zakrzewskib@Michigan.gov)