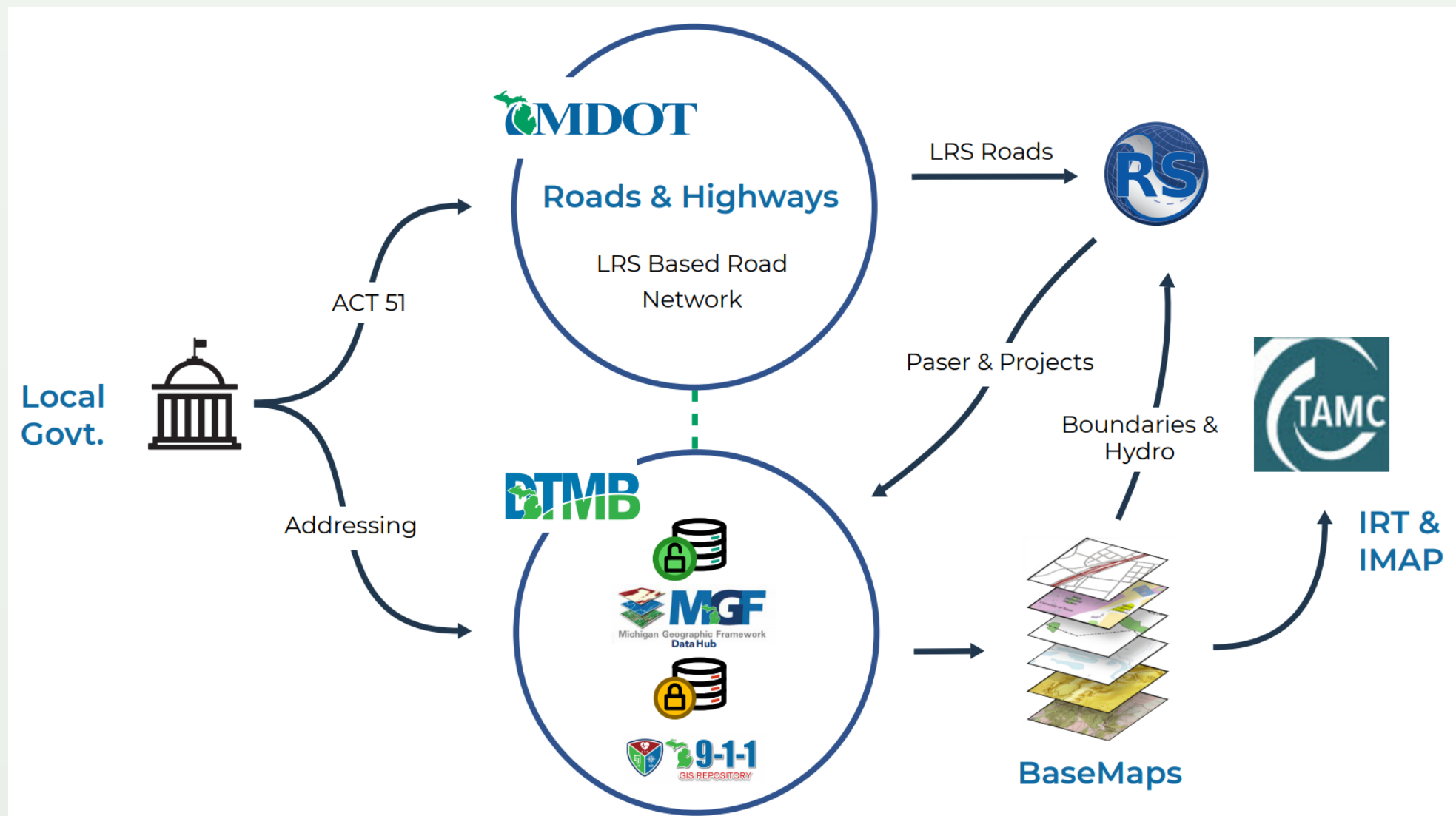




New GIS Technology and Data Flows

GIS Data Flow for Road Network and TAMC Apps

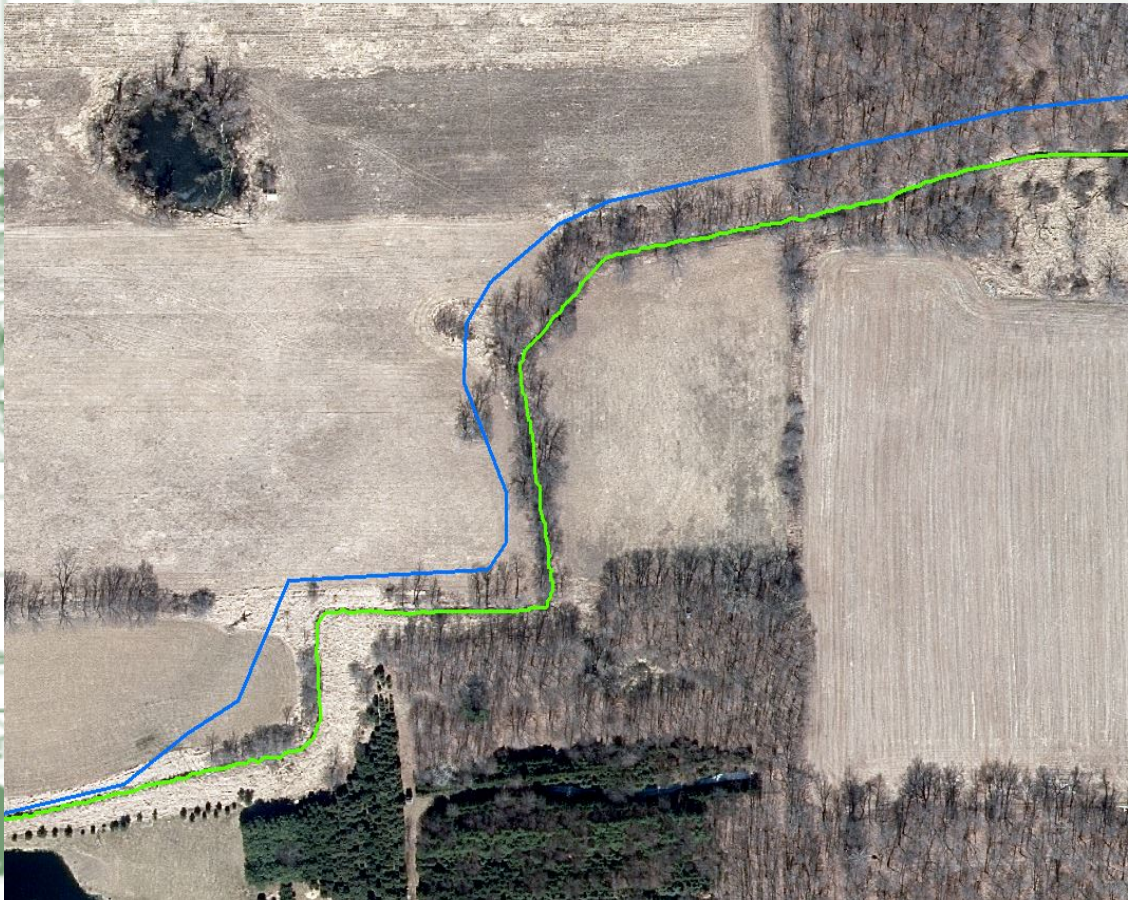


Hydrography Pilot Project and Culvert Data



- Kalamazoo River Watershed Pilot Project
 - MSU developing new flow lines based on QL2 LiDAR data
 - Culverts gathering
- Coordinating with USGS on new standards and NHD attributes
- Machine learning being tested
- Benefits to other projects – wetlands delineation
- Importance of culverts to provide more accurate results and for future flow modeling

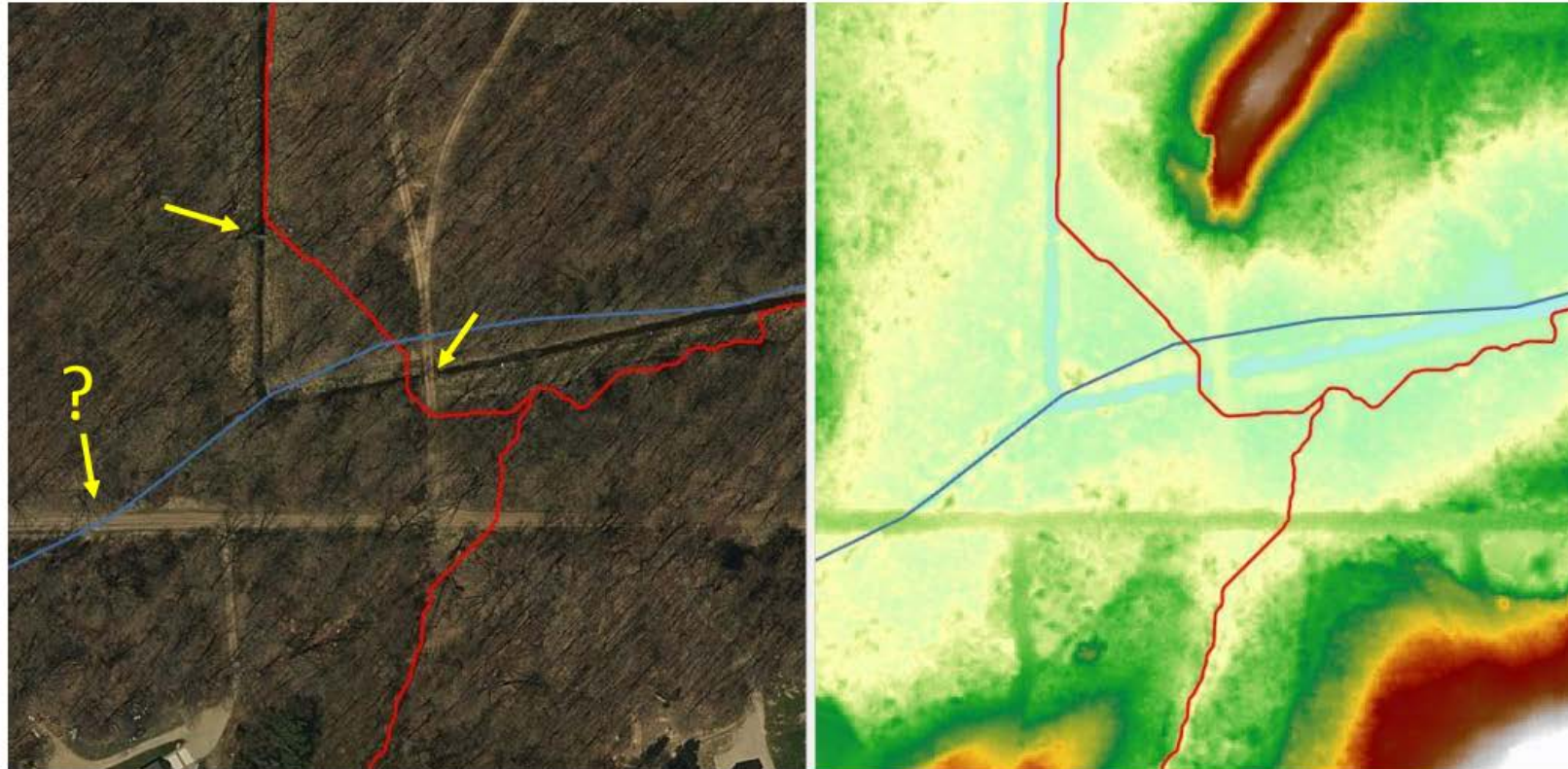
Hydrography Pilot Project and Culvert Data



Hydrography Pilot Project and Culvert Data

Effects of Missed Culverts and Barriers

- Missed culverts result in misplaced flowlines

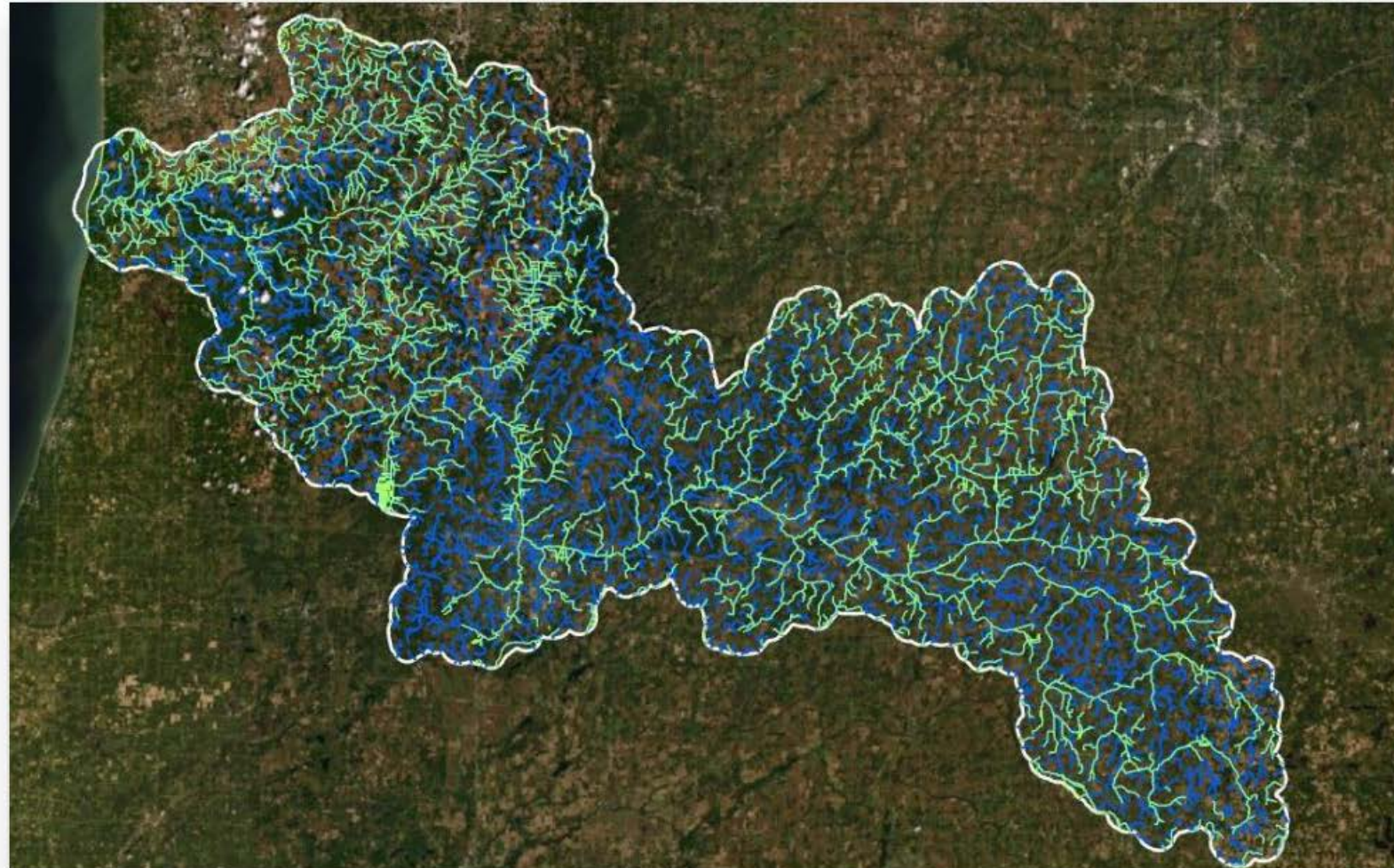


RS&GIS

Hydrography Pilot Project and Culvert Data



Draft Flowlines



NHD
New
Flowlines

RS&GIS