

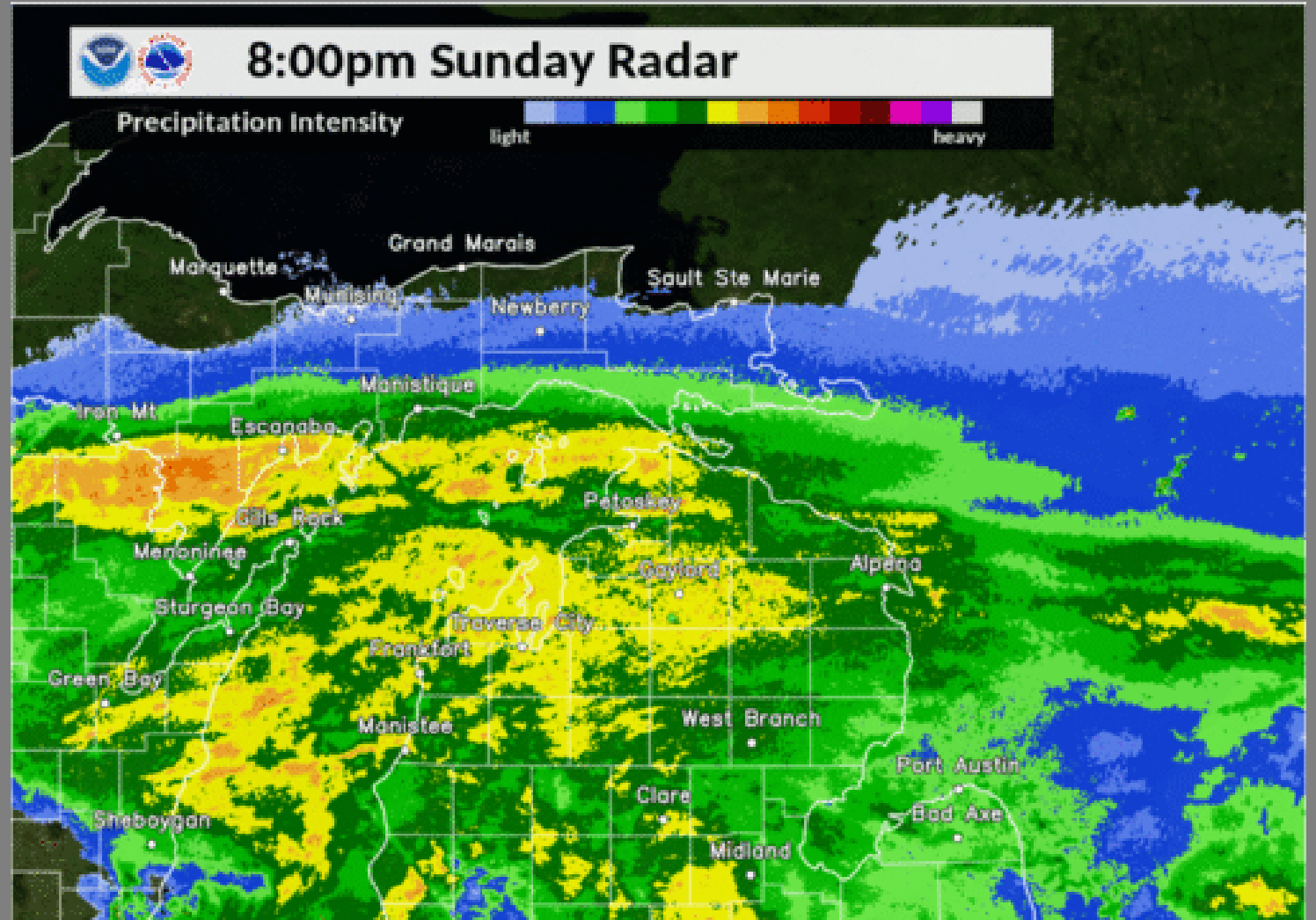


May 2020 Flood

DAVE PETTERSCH- MANAGING DIRECTOR
GLADWIN COUNTY ROAD COMMISSION

Sunday May 17th- Forecast Calls for 4'-8" of rainfall county wide.

An area of low pressure stalled across the Great Lakes region and brought a prolonged period of steady rainfall from Sunday, May 17th through Monday, May 18th. Despite a lack of extraordinarily high rainfall rates, simple persistence of steady rain resulted in significant rainfall totals, along with significant rises on area rivers (historic for some). In addition, gusty east winds accompanied this system, which brought increased lakeshore flooding concerns to portions of northeast lower Michigan coastline.



Precipitation Report

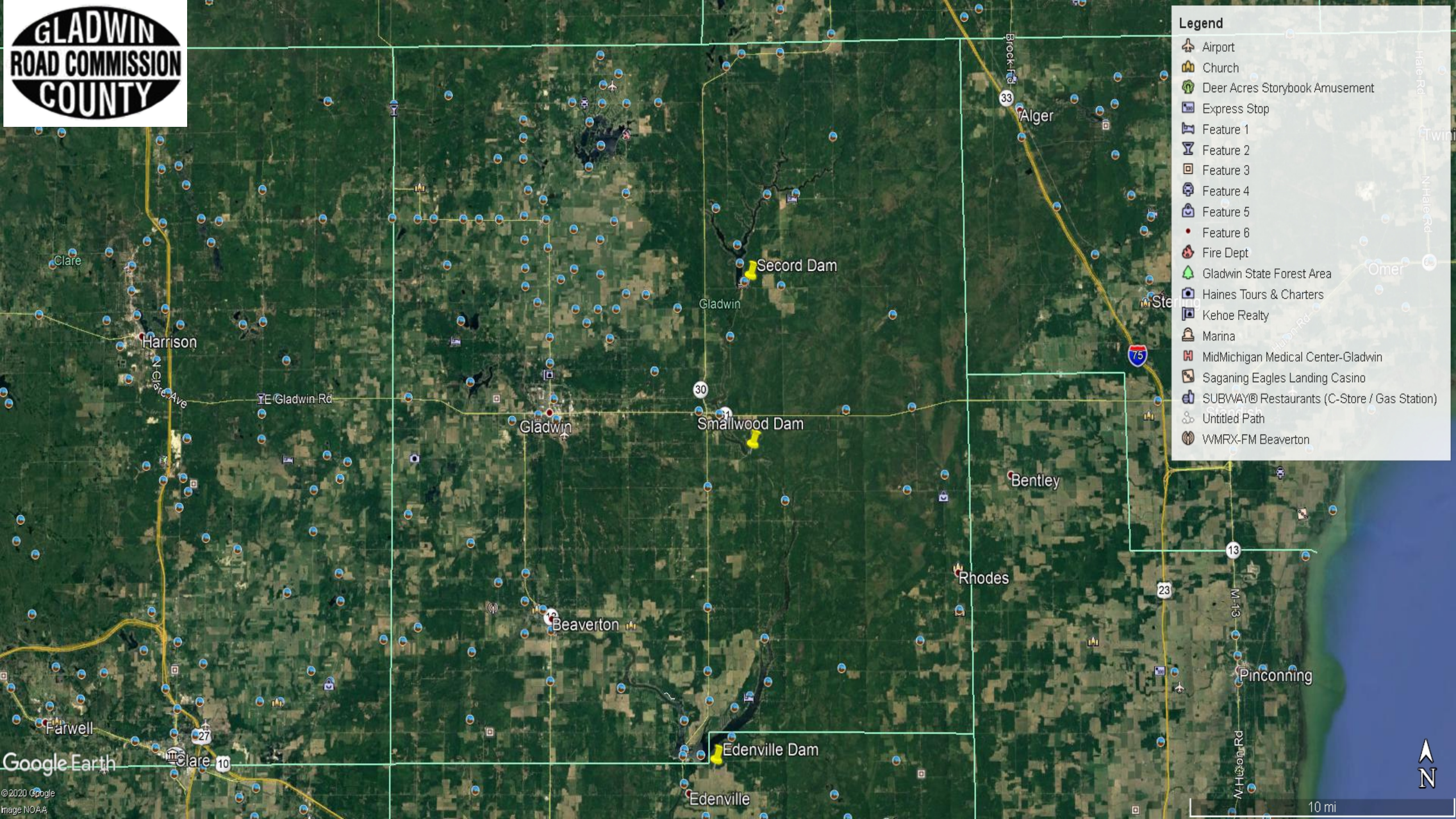
5/18/2020

► ...PRECIPITATION REPORTS...

► LOCATION	AMOUNT	TIME/DATE	PROVIDER
► AU GRES	8.10 IN	0700 AM 05/19	MEDIA
► EAST TAWAS	7.97 IN	0828 AM 05/19	CWOP
► AU GRES 9.0 N	7.60 IN	0830 AM 05/19	MEDIA
► STERLING	7.20 IN	0730 AM 05/19	MEDIA
► SILVER CREEK	5.57 IN	0702 AM 05/19	RAWS
► WEST BRANCH	5.47 IN	0800 AM 05/19	COCORAHS
► EAST TAWAS	5.41 IN	0800 AM 05/19	COCORAHS
► ALGER	4.60 IN	0601 AM 05/19	RAWS
► HOUGHTON LAKE	4.48 IN	0800 AM 05/19	COCORAHS
► LAKE CITY	4.28 IN	0700 AM 05/19	COCORAHS
► GLADWIN	4.13 IN	0700 AM 05/19	COOP

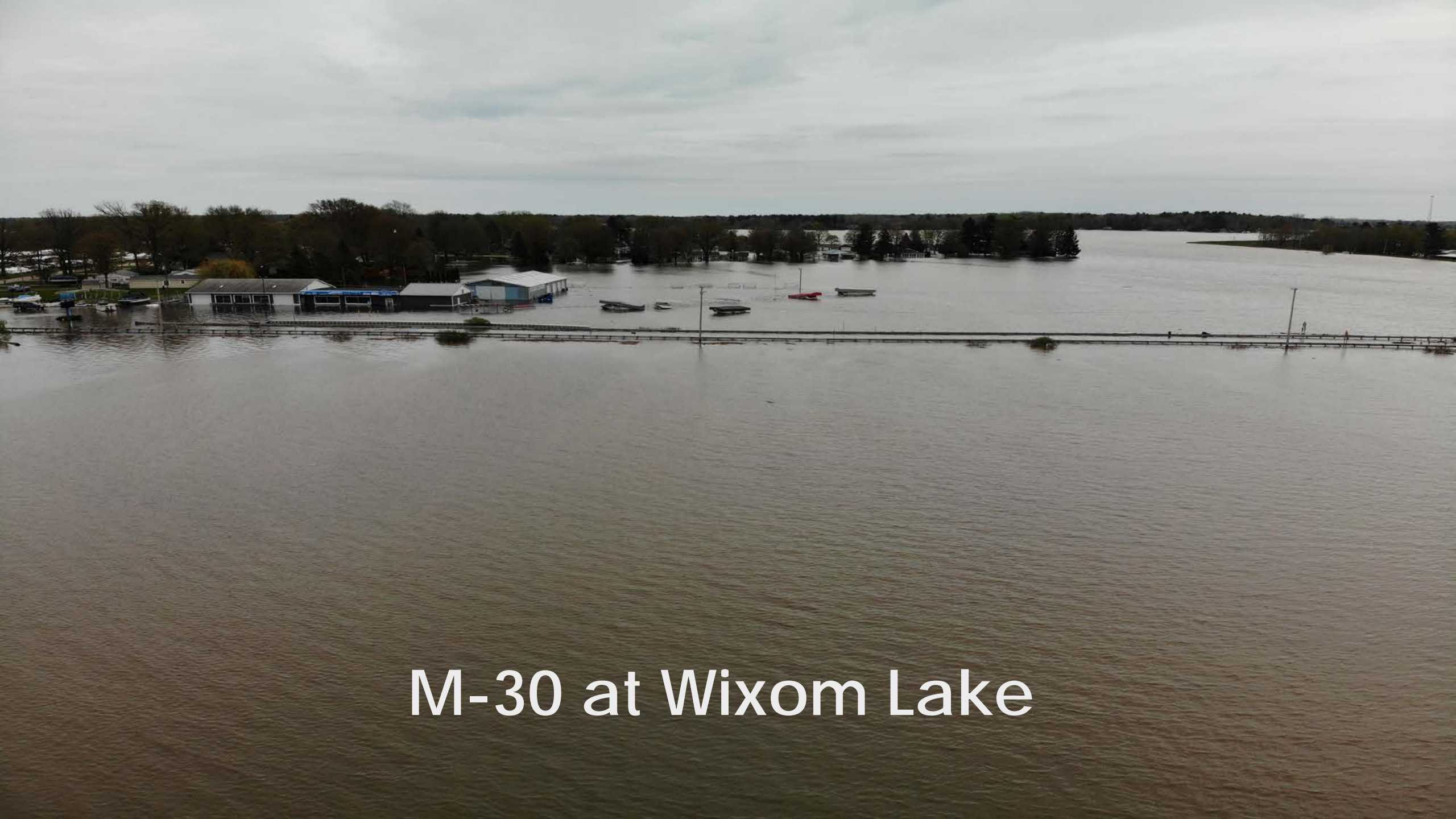
Tittabawassee River

- ▶ Starts in Southern Roscommon/Ogemaw Counties, northern Gladwin.
- ▶ Runs north to south, throughout Gladwin County.
- ▶ 3 dams, Secord, Smallwood, and Edenville (Wixom Lake).
- ▶ Rainfall hit hardest at the far northern edge of Gladwin County, into neighboring counties.
- ▶ Monday, May 18th, our calls began in the northern townships.
- ▶ Tuesday, 6:00 PM, the dam burst in Edenville on our southern border.



Legend

- Airport
- Church
- Deer Acres Storybook Amusement
- Express Stop
- Feature 1
- Feature 2
- Feature 3
- Feature 4
- Feature 5
- Feature 6
- Fire Dept
- Gladwin State Forest Area
- Haines Tours & Charters
- Kehoe Realty
- Marina
- MidMichigan Medical Center-Gladwin
- Saganing Eagles Landing Casino
- SUBWAY® Restaurants (C-Store / Gas Station)
- Untitled Path
- WMRX-FM Beaverton



M-30 at Wixom Lake

Play Video

Storm Response

- ▶ Initial response proved futile. TOO MUCH WATER!
- ▶ We focused on getting stranded people out, especially low-lying areas below the dams.
- ▶ The hardest part of our response: very little you can do while the water is still flowing.
- ▶ When the dam failed, the water went down, and the work began.

Challenges Begin

- ▶ When the water went down, it pulled the sediment from the lakebed, and scoured the bridges.
 - ▶ Highwood Road- Severely compromised
 - ▶ Estey Road- Extremely compromised
 - ▶ Edenville M-30 – Completely Gone
 - ▶ Dale Road- Scoured and compromised.
- ▶ All Primary Roads in the river area were also compromised.
- ▶ MOBILITY WAS NOW SEVERELY COMPROMISED!!!!!!!

Next Challenge- PEOPLE!

- ▶ All mobility east to west in our county and those counties south was cutoff.
- ▶ People could not get in or out, however, people from all over rushed to the area.
- ▶ Homeowners, gawkers, volunteers, sightseers, first responders, residents, etc.....
- ▶ During a pandemic, it seemed like our county gained 50,000 residents, and our roads were in disarray.







- Highwood Road



Sugar River Road-

Jones Road, Billings Twp.



Asset Management

- ▶ We mapped our closures and assigned priority.
- ▶ We needed to establish mobility for the highest number of people.
- ▶ We selected roads to work on first based on; emergency (trapped), and traffic count.
- ▶ We had to get those trapped or in need of emergency services first, then establish mobility of the highest amount of individuals we could with each repair.
- ▶ In several cases, this meant repairing local roads first, to keep traffic moving around the area, before dropping back to primary roads, with longer repair timelines.